



RADIATION MEDICINE

AT ROSWELL PARK

If radiation therapy will be part of your cancer treatment plan, choosing where to receive it is one of the most important decisions you'll make.



RoswellPark.org

OUR PROMISE TO YOU

At Roswell Park, your treatment will be planned and delivered by a radiation oncology team with the expertise and experience to use the latest technology, offer the highest level of quality and safety, and focus on what's best for you at all times.

Quality

We work with your surgical and medical oncologists and our experts in imaging and pathology to ensure your treatment plan is optimally coordinated, based on best practices and medical necessity, and aligned with your cancer treatment goals.

Our extensive quality assurance program confirms that all aspects of your treatment plan are double- and triple-checked and verified prior and throughout your treatment. We are fully accredited by several external review agencies, reflecting that our practices are of the highest level of quality and safety.

Safety

Your Experience

We will care for you with compassion and respect; value your time; and make your comfort during treatment our priority. Surveys show 99% of radiation medicine patients gave us the highest rating for satisfaction with their care, the concern and friendliness of our staff, and would recommend our services to others.

ABOUT RADIATION THERAPY

More than half of all cancer patients will have some type of radiation therapy as part of their cancer care. Radiation therapy, or radiotherapy, uses high-energy radiation to destroy cancer cells or slow their growth. Your treatment plan may involve radiotherapy alone or in combination with other cancer therapies.

The Roswell Park Advantage

National recognition. Roswell Park is a National Cancer Institute-designated Comprehensive Cancer Center, and our physicians are among the nation's top experts who develop the evidence-based treatment guidelines used across the country.

Advanced treatment facility. We have the most technologically advanced and comprehensively equipped radiation facility in the WNY region.

A focus on quality of life. We use innovative techniques to prevent, reduce and manage treatment-related side effects, and we integrate care from Roswell Park's experts in nutrition, rehabilitation and supportive care.



David Mattson Jr., MD
Radiation Oncologist

What to expect at your consultation

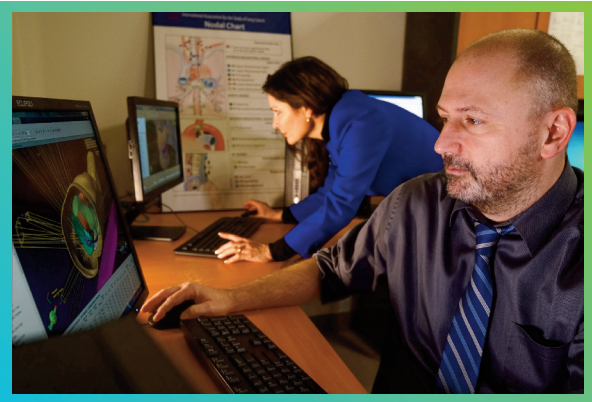
You'll meet with our radiation oncologist who specializes in your specific cancer type. This physician will review all of your imaging, pathology and other medical reports.

Based on this information, the physician will explain your treatment options, the rationale and potential side effects for each, and make a recommendation.

The radiation planning, simulation, and treatment process will be fully explained. We encourage you to ask questions and we aim to put you at ease.

What Sets Us Apart

Virginia Lazarov
Medical Dosimetrist



Lee Hales
Chief Medical Dosimetrist

Roswell Park's expertise means we can offer the personalized radiotherapy that's best for you, including some treatments and techniques not available anywhere else in the region. Learn more about these therapies at www.roswellpark.org/radiation-medicine/treatment-types

Our radiation team takes a comprehensive and meticulous approach that demands multiple steps—extra measures, care and attention at every phase of the treatment process—that set Roswell Park's quality and safety above others'.

We understand this is a difficult time in your life, and we are here to help.

BEFORE YOU MAKE ANY DECISION ABOUT RADIATION TREATMENT, PLEASE SPEND JUST ONE DAY WITH US.

MAKE AN APPOINTMENT FOR YOUR CONSULTATION

ONLINE: [RoswellPark.org/become-a-patient](https://www.RoswellPark.org/become-a-patient)

CALL: 1-800-Roswell (1-800-767-9355)

HOURS: 8 a.m. to 5 p.m. (Eastern Time)
Monday through Friday

FREE PARKING

If you choose to receive your treatment from us, you'll receive a pass so you may park in a free, designated on-site parking lot, with direct access to the Radiation Medicine area of Roswell Park.



Elm & Carlton Streets | Buffalo, New York 14263
www.RoswellPark.org | 1-800-ROSWELL (1-800-767-9355)

A National Cancer Institute-Designated Comprehensive Cancer Center | A National Comprehensive Cancer Network Member | A Blue Distinction Center for Transplants®