

# Breast Reconstruction



Roswell Park's Plastic & Reconstructive surgeons use the **most advanced techniques** to preserve and restore the appearance of the breasts. We offer *immediate, immediate-delayed and delayed reconstruction*, depending on patient preference, disease status and overall treatment plan.

## What Sets Us Apart

- **Highly-trained surgical team** uniquely qualified and dedicated to offering a full spectrum of options to address any reconstruction need, including those related to cancer, mastectomy or effects of treatment.
- **High-volume facility** for breast reconstruction.
- **Reconstruction plan coordinated** with patient's on-site or community-based cancer care team.

## Procedures We Offer

- **Breast implants.** Options include silicone or saline implants alone, implants plus biologic dermal substitutes, or implants plus the patient's own flaps.
- **Free flap surgeries** using microvascular techniques allow the transfer of a patient's tissue from multiple body regions to the operated site. These include:
  - > **Deep Inferior Epigastric Perforator (DIEP) flap**
  - > **Superficial Inferior Epigastric Perforator (SIEP) flap**
  - > **Gluteal Artery Perforator (GAP) flap**
  - > **Transverse Upper Gracilis (TUG) flap**
  - > **TRAM flap**
  - > **Latissimus Dorsi flap**
- **Autologous fat transfer**, using a patient's fat from other body locations to fill concave deformities.
- **Combination** of implant, flap and/or autologous fat transfer.
- **Nipple and areola reconstruction.** More than 50 techniques offer range of options including tattooing to suit each patient's specific case.
- **Lymph node transplantation** to reduce or eliminate lymphedema symptoms.
- **Symmetry procedures**, such as breast reduction, augmentation or lift to achieve similar effect on other breast.

Our Plastic & Reconstruction surgeons will evaluate all potential options and will work with the patient to plan a **safe and effective** breast reconstruction that meets patient needs and preferences.



## Contact Us

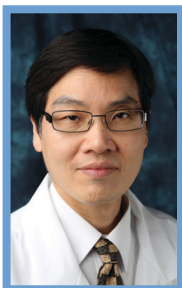
Call 716-845-RPMD (845-7763) to arrange a consultation, second opinion or to refer a patient.

## Meet the Plastic & Reconstructive Surgery Team



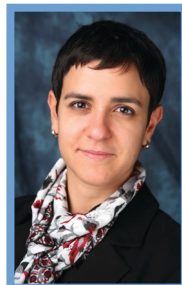
**Robert Lohman, MD**

Associate Professor of Oncology  
Plastic & Reconstructive Surgery



**Wong Moon, MD, FACS**

Associate Professor of Oncology  
Plastic & Reconstructive Surgery



**Cemile Nurdan Ozturk, MD**

Assistant Professor, Plastic Surgery

## About Insurance Coverage

Federal law (Women's Health and Cancer Rights Act of 1998) requires group health insurance plans and HMOs that cover mastectomy costs to also cover reconstruction surgery or other post-mastectomy treatments for female breast cancer patients. Required coverage includes:

- all stages of reconstruction on the affected breast,
- symmetry procedures to the other breast, and
- prostheses and treatment of physical side effects of mastectomy such as lymphedema.

Elm & Carlton Streets | Buffalo, New York 14263  
[www.RoswellPark.org/RPMD](http://www.RoswellPark.org/RPMD)  
716-845-RPMD (716-845-7763)

A National Cancer Institute-Designated Comprehensive Cancer Center | A National Comprehensive Cancer Network Member  
A Blue Distinction® Center for Cancer Care | A Blue Distinction® Center for Transplants