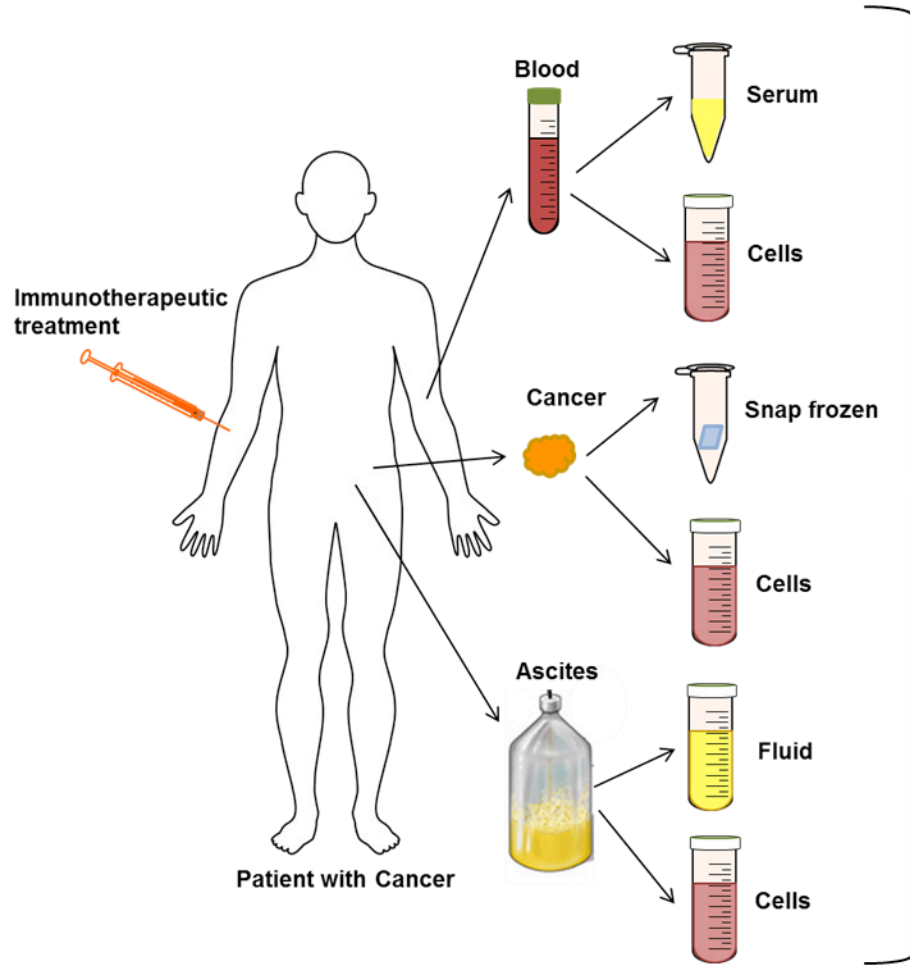


state-of-the-art immune monitoring for clinical trials



- Antigen-specific cell sorting
- Biospecimen cryopreservation
- ELISA for cytokines and antigens
- ELISPOT assay
- HLA typing
- Immune cell phenotyping
- Intracellular cytokine staining
- Metabolic analysis
- Tetramer staining
- RT-PCR, qPCR