

# Maxpar® Human ES/iPS Cell Phenotyping Panel Kit

Catalog#: 201320  
Package Size: 25 tests

**Storage:**

- Antibodies, Buffers, and Water: 4°C. Do not freeze.
- Intercalator-Ir: -20°C.

**Contents:**

- Maxpar® Cell Staining Buffer (500 mL)
- Maxpar® Nuclear Antigen Staining Buffer Concentrate 4X (8 mL)
- Maxpar® Nuclear Antigen Staining Buffer Diluent (30 mL)
- Maxpar® Nuclear Antigen Staining Perm 1X (100 mL)
- Maxpar® Fix and Perm Buffer (25 mL)
- Maxpar® Water (500 mL)
- Cell-ID™ Ir Intercalator (125 µM; 25 µL)
- Maxpar® Antibodies (see table for panel)\*\*

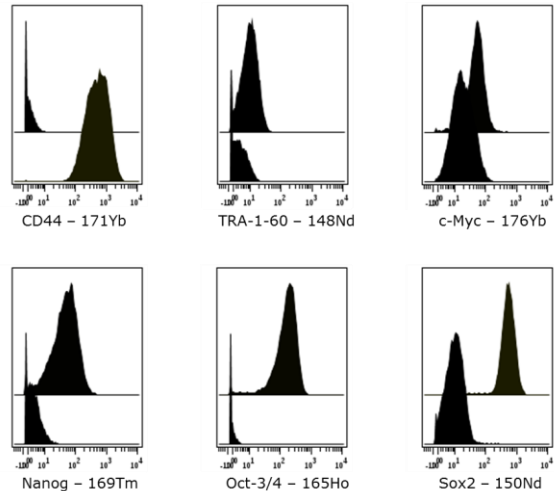
Target	Clone	Metal
TRA-1-60	TRA-1-60	148Nd
Sox2	O3O-678	150Nd
Oct-3/4	40/Oct-3	165Ho
Nanog	N31-355	169Tm
CD44	IM7	171Yb
c-Myc	9E10	176Yb

\*\* The antibodies are provided in individual tubes, not a premixed cocktail.

## Technical Information

**Description:** Induced pluripotent stem (iPS) cell technology was pioneered in 2006, when it was shown that cellular reprogramming from somatic cells could be achieved through forced expression of the transcription factors Oct-3/4, Klf4, Sox2, and c-Myc (OKSM). Based on morphology, capacity to self-renew and developmental potential, iPS cells are nearly indistinguishable from their embryonic stem cell counterparts. iPS cells hold great promise in the field of regenerative medicine because they propagate indefinitely, as well as give rise to every other cell type in the body. Since iPS cells can theoretically be derived from any adult tissue, they not only bypass the need for embryos, but can be made in a patient-matched manner. Recently, mass cytometry was used to map the progression of mouse somatic cells undergoing reprogramming to iPS cells.

**Recommended Usage:** For staining embryonic stem (ES) or induced pluripotent stem (iPS) cell cultures isolated by standard techniques according to the MaxPar® Nuclear Antigen Staining Protocol.



Expression levels of the 6 markers in the Maxpar® Human ES/iPS Cell Phenotyping Panel Kit on human H9 embryonic stem cells (top overlay) and BJ fibroblasts (bottom overlay). Cells kindly provided courtesy of Craig E. Nelson lab, University of Connecticut.

**References:**

Mechanisms and models of somatic cell reprogramming. Buganim Y, Faddah DA, Jaenisch R. Nat Rev Genet. 2013 Jun;14(6):427-39. Review.

Early reprogramming regulators identified by prospective isolation and mass cytometry. Lujan E, Zunder ER, Ng YH, Goronzy IN, Nolan GP, Wernig M. Nature. 2015, Apr 1.

A continuous molecular roadmap to iPSC reprogramming through progression analysis of single-cell mass cytometry. Zunder ER, Lujan E, Goltsev Y, Wernig M, Nolan GP. Cell Stem Cell. 2015 Mar 5;16(3):323-37.

**For technical support visit [fluidigm.com/support](http://fluidigm.com/support)**

EMAIL **United States and other countries not in Europe or Asia** [techsupport@fluidigm.com](mailto:techsupport@fluidigm.com) | **Europe** [techsupporteurope@fluidigm.com](mailto:techsupporteurope@fluidigm.com) | **Asia** [techsupportasia@fluidigm.com](mailto:techsupportasia@fluidigm.com)  
PHONE **United States (toll-free)** +1 866 358 4354 | **Europe** +33 1 60 92 42 40 | **Japan** +81 3 3662 2150 | **China** +86 21 3255 8368 | **All other countries** +1 650 266 6100

**For Research Use Only. Not for use in diagnostic procedures.**

Information in this publication is subject to change without notice. **Safety data sheet information** [fluidigm.com/sds](http://fluidigm.com/sds) **Patent and license information** [fluidigm.com/legalnotices](http://fluidigm.com/legalnotices) | Fluidigm, the Fluidigm logo, Cell-ID, CyTOF, and Maxpar are trademarks or registered trademarks of Fluidigm Corporation in the United States and/or other countries. © 2015 Fluidigm Corporation. All rights reserved. 05/2015