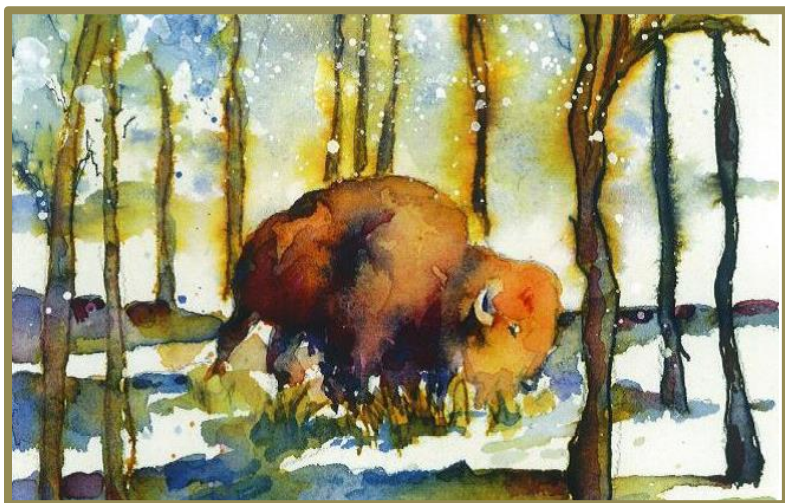


# Information for Stem Cell Transplant Patients Outside the Buffalo Area



This information is for patients receiving a stem cell transplant from Roswell Park Cancer Institute in Buffalo, New York.

## **Interpreter Services**

### **Are Interpreter Services Available?**

At this time Roswell Park is not able to provide interpreter services to Ontario patients. You must be able to speak, read and understand English to have your transplant at Roswell Park.

## **Pre-Admission Testing**

You will need to have some testing done before your admission to the hospital for your transplant.

### **Where is initial, pre-admission testing done?**

All of your initial screening, consultation and patient education will be done on site at Roswell Park Cancer Institute in Buffalo, New York.

To make things easier for you, and to speed up transplant clearance activities, any tests, exams and consultations happen on the same day as your initial consult.

### **What accommodations are provided for the initial testing?**

Overnight accommodations are available to you, your donor, and your caregivers if you need them. Talk to your transplant coordinator at Roswell Park.

## **Communication**

### **How much communication will I have with Roswell Park before arriving in Buffalo?**

All contact will be made by your transplant coordinator.

## **When will this communication happen?**

You will get your first phone call from Roswell Park within 24 hours of them getting notice that you will be coming for your stem cell transplant.

Then you will get a second call to arrange your first consultation appointment. The consultations will be arranged once Roswell Park gets your medical records from your Ontario hospital.

## **Rooms at Roswell Park**

### **Which ward will I stay on during and after the transplant?**

You will stay on the Blood and Marrow Transplantation Unit. It is located on the 5th and 6<sup>th</sup> floor of the main hospital.

### **What will the hospital room be like and what are available?**

You will have a private room. Your room will have a viewing window and a camera so that nursing staff can monitor you more closely if needed.

All rooms and hallways are HEPA (High Efficiency Particulate Free Air) filtered, so that you can leave your room and walk around the unit without worrying about infection.

Isolation rooms are available if your health care team decides that you need extra protection.

### **What kinds of facilities are available on the BMT unit?**

A sun room and restrooms for your family and visitors are located next to the inpatient unit, on the 5th floor.

The sun room has comfortable seating and a refrigerator, microwave oven, television, washer and dryer, and a telephone.

Amenities include cable TV and free WiFi for patients and families.

## **Supportive Services**

### **What supportive services are available?**

Many people on your health care team will be helping you through your BMT procedure. Your team members will be talking to each other at all times to make sure that you get the best possible care.

Your medical and support team of BMT experts include:

- doctors
- nurse practitioners
- physician assistant
- nurses
- transplant coordinators
- social workers
- physical therapists
- occupational therapists
- case managers
- pharmacists
- dietitians

Roswell Park also offers:

- pastoral care services
- patient advocates
- palliative care practitioners
- Youth and Young Adult Services
- A Resource Center for Patients and Families which offers free wigs, hats, laptop loans and DVDs.

Many of the supportive services offered at Roswell Park are also available to your caregiver and family members as well.

## **Caregivers**

### **What accommodations are provided for caregivers in and out of the hospital?**

Your caregiver can stay in your hospital room with you while you are an inpatient

Hotel/hospitality accommodations can also be made for your caregiver outside the hospital while you are an inpatient.

## **Hospital Stay and Time in the U.S.**

### **How long are patients usually in the hospital? How long after leaving the hospital do patients spend in the U.S.?**

The process from time of admission to going back home to Ontario is approximately 100 days. A significant portion of this time will be spent as an outpatient.

## **Outpatient Appointments**

The plan for your outpatient care will be made based on how you are doing after your transplant. You can expect to come for appointments less often as your health improves.

### **What do outpatient appointments post-transplant involve? Which members of the health care team do patients usually see?**

The visits usually include blood work, an assessment by a:

- Registered Nurse
- NP/PA assessment
- Physician

Other services like IVs or infusions may also happen during your clinic visit.

## **How many times a week are the appointments?**

You should expect to have 3-5 hospital visits per week right after you leave the hospital as an inpatient.

## **Dental Care**

### **If a patient needs dental care while in the U.S., is that covered?**

Yes. Dental services will be provided at Roswell Park from a team consisting of:

- dental oncologists
- maxillofacial prosthodontists
- dental oncology residents
- dental laboratory technicians
- registered dental hygienists
- dental assistants

## **Food**

### **What food is available while we are at Roswell Park?**

You will be able to order room-service food between 7 am and 7 pm. Here is a link to more information:

<https://www.roswellpark.org/nutrition/patient-dining>

Your caregivers can buy \$5 meal tickets to order room service meals to eat with you.

If you have left over meal tickets you can get a refund for them where you bought them.

## **Accommodations After Transplant**

### **Is the cost of post-transplant accommodations covered by Roswell Park?**

Yes. Post-transplant patients have a variety of hotels and hospitality options either connected to the hospital or close by.

Shuttles are provided if you decide to stay off the hospital campus.

Your lodging wants and needs will be discussed with you in advance.

Arrangements and reservations will be made for you by Roswell Park staff.

## **Emergency Medical Costs**

### **Will Roswell Park cover Emergency Medical costs if I need medical care not connected to the stem cell transplant?**

Yes, we will cover these costs.

## **Additional Information**

### **Where can I get more information?**

Written materials are readily available and will be sent to you once you become a patient.

A website for Canadian patients is under development.

For general information go to [www.roswellpark.org](http://www.roswellpark.org)

## Contact Information

**Who should I contact if I have questions or need more information?**

Stephen Schinnagel, MS  
BMT Clinic Administrator  
(716) 845 1401  
[Stephen.Schinnagel@roswellpark.org](mailto:Stephen.Schinnagel@roswellpark.org)

Sara Randolph  
Administrator, Managed Care Operations  
(716) 845 8061  
[Sara.Randolph@roswellpark.org](mailto:Sara.Randolph@roswellpark.org)



ROSWELL PARK CANCER INSTITUTE  
PATIENT EDUCATION



