



Ring Out

Ring this bell
Three times well
Its toll to clearly say,
"My treatment's done
This course is run
And I am on my way!"

— U.S. Navy Rear Admiral Jive La Mague



Cancer patients who wish to mark the end of their treatment,
the completion of a milestone on their journey or good news
received along the way are invited to ring this victory bell.

Breakthroughs
begin with *you*



ANNUAL REPORT
2024 - 2025

A Message from **Our President and CEO**



Breakthroughs begin with you

As we look back on the year together, I am humbled and inspired by your extraordinary generosity. Your leadership giving and steadfast ambassadorship have made it possible for us to push the boundaries of what is possible in the fight against cancer.

On behalf of every patient, family, researcher and clinician who benefits from your support, thank you.

Your commitment comes at a time of profound urgency and hope. Cancer does not wait — and neither can we. Today, the need for continued funding is greater than ever as we stand on the cusp of a transformational era. Revolutionary advances in cell and gene therapy are offering new hope to patients with blood cancers and hard-to-treat solid tumors, diseases once thought untouchable. These emerging therapies have the power to rewrite what a cancer diagnosis means for countless individuals and their families.

Together, we are building the bridge to that future — a future where innovative science, compassionate care and equitable access come together to save more lives than ever before. But this progress is only possible because of you. Your continued investment fuels the research, trials and breakthroughs that move us closer to cures.

Together, we are rewriting the story of cancer.

Thank you for believing in this mission and for helping us advance it with such passion and purpose. As we look ahead, I invite you to stay with us on this journey. The best is yet to come — and it is within our reach, because of you.

With deepest gratitude,

Candace S. Johnson
Candace S. Johnson, PhD
President & CEO

M&T Bank Presidential Chair in Leadership
Roswell Park Comprehensive Cancer Center

A Letter from Our Chairman

I am pleased to have served my second year as Chairman of the Roswell Park Alliance Foundation Board at such an exciting time in the fight against cancer. I am reminded of the importance of the Alliance Foundation and its many generous donors. We are fortunate to have dedicated staff at the Alliance Foundation and world-class faculty at Roswell Park Comprehensive Cancer Center.

Last year, the National Cancer Institute awarded Roswell Park the highest rating possible — an **Exceptional** rating! This places us in the **top 10% of comprehensive cancer centers nationwide!** Our nursing team also earned a prestigious distinction: **Magnet® Recognition** for nursing excellence from the American Nurses Credentialing Center (ANCC). These are two truly **Exceptional** accomplishments that donors play an important role in.

At the same time, because of your generous support, Roswell Park expanded its cell production facilities from six to 20 clean rooms. This puts Roswell Park at the forefront of cellular therapy development and the production of vital cancer therapies. Roswell Park is now the largest academic cell and gene therapy research and manufacturing facility in the United States!

It was the promise of this project that enabled Roswell Park to attract some of the world's leading cancer research scientists, including Dr. Renier Brentjens who says, ***"This is a time of tremendous hope and promise: the time we are going to be able to give back to patients, even those with advanced cancers, is within our reach today."***

The Alliance Foundation committed to raising \$20 million through the Igniting Cancer Breakthroughs campaign to fund construction and the start-up of this state-of-the-art hub for life-saving treatments. Currently we are halfway to our goal, and your continued leadership support is needed to fulfill our commitment. We are endlessly grateful for your partnership and look forward to reaching this important goal together.

As we all know, cancer patients do not have time on their side. The continuous need for cancer breakthroughs is great, and the time for innovation is now.

The development of cell therapy is very personal to me. My wife Mary Alice is once again in remission after successfully completing her second round of treatments for lymphoma last year. Cellular therapy will likely be a vital future treatment option to keep her cancer under control and will also be a critical, life-saving treatment for many other cancer patients in the future.

In closing, I wish Kim Guido a very happy retirement after 20+ years of touching countless lives through her work and welcome our new Director of Individual Gifts Jennifer Seth-Cimini who will continue that important work. I also want to welcome Kate Kaming to the team as Vice President of Development. She comes to us with a wealth of experience, and we look forward to working with her to continue to build on all our past successes and the pursuit of new opportunities.

Ross J. Eckert
Chairman
Roswell Park Alliance Foundation



*As we all know,
cancer patients
do not have time
on their side.
The continuous
need for cancer
breakthroughs
is great, and
the time for
innovation is now.*

*This report is an in-house
production.*

*Stories: Michelle Ostrander,
Jenna Schifferle and
Jackie Roberts McDonough*

Graphic design: Amy Prior

*Photography: Ben Richey,
Brittany Sikora and
Thomas McBride*

Roswell Park Emerges as **World Leader in Cell Therapy**



At Roswell Park, our world-renowned researchers aim to not only treat cancer patients today, but also change the ways we understand and respond to these diseases long term. That means your donations are fueling the next generation of cancer care; a world where no one has to fear a cancer diagnosis.

Igniting Cancer Breakthroughs

Thanks to generous contributions from supporters like you, this past year, Roswell Park completed phase one of the Igniting Cancer Breakthroughs campaign with the opening of 14 new state-of-the-art clean rooms.

These new clean rooms, paired with four pre-existing clean rooms, were built as part of the new Roswell Park GMP Engineering & Cell Manufacturing (GEM) Facility. This facility is New York's first cell and gene therapy hub and one of the largest of its kind in the world.

“The future of medicine is in cell and gene therapy and this new hub at Roswell Park Comprehensive Cancer Center will put Western New York – and all of New York State – at the cutting edge of life-saving treatments and therapies,” said New York State Governor Kathy Hochul.

The GEM facility will improve patient access to cell and gene therapies while fueling more clinical trials in pursuit of effective, less invasive treatments for all types of cancer.

In launching Roswell Park as one of the premier cell therapy discovery and development institutions in the nation, your partnership helped make history in 2024. Let's keep that momentum going as we enter phase two of this initiative.



From Liquid Cancers to Solid Tumors

Now that the facility is built, Roswell Park's cell therapy team, led by Deputy Director Renier Brentjens, MD, PhD, is powering into the next phase: clinical trials.

Car T-cell therapy, which will be at the forefront of this research, has proven to be one of the most promising treatments on this horizon for liquid cancers. Now, the jump can be made to finding applications for cell therapy on solid tumors.

Here is a look at the upcoming clinical trials you're helping make possible:

- ◆ **Small Cell Lung and Prostate Cancer**, led by Drs. Renier Brentjens and Edwin Yau
- ◆ **Pancreatic Cancer**, led by Drs. Renier Brentjens, Anu Krishnamurthy and Leonid Cherkassky
- ◆ **Ovarian Cancer**, led by Drs. Marco Davila and Emese Zsiros
- ◆ **Adult and Pediatric Sarcoma**, led by Drs. Renier Brentjens, Ajay Gupta and Joyce Ohm

The work being done in these clean rooms seemed like science fiction not long ago. Thanks to donors like you, it's happening now — changing and saving lives — and re-envisioning how we treat cancer worldwide.



RENIER BRENTJENS, MD, PhD

*Deputy Director and Chair of Medicine
The Katherine Anne Gioia Endowed Chair
in Cancer Medicine*



EDWIN YAU, MD, PhD

Department of Medicine



ANURADHA KRISHNAMURTHY, MBBS

*Associate Director of Early Phase Clinical Trials
for Solid Tumor Cell Therapies*



LEONID CHERKASSKY, MD

Department of Surgical Oncology



MARCO DAVILA, MD, PhD

*Senior Vice President & Associate Director
for Translational Research
Rustum Family Endowed Chair
in Translational Research*



EMESE ZSIROS, MD, PhD, FACOG

*Chair, Department of Gynecologic Oncology
Shashi Lele, MD, Endowed Chair
in Gynecologic Oncology*



AJAY GUPTA, MD, MS

Department of Pediatric Oncology



JOYCE OHM, PhD

*Chair, Department of Cancer Genetics
and Genomics
John & Santa Palisano Endowed Chair
of Cancer Genetics*



From center: Chris and Danielle Koch with Dr. Candace Johnson and Dr. Renier Brentjens surrounded by New Era and Roswell Park representatives.

Roswell Park Salon 'Elevates' Patient Experience with New Name

In February, Roswell Park announced the naming of the New Era Cap Foundation Elevate Salon. The naming of the salon, located in Roswell Park's downtown campus, comes with a \$1 million endowed gift from the New Era Cap Foundation and New Era Cap, LLC.

"When we come together to support our community, it fosters resilience, empowers individuals and creates a collective strength that drives positive, lasting change for everyone involved," said Christopher Koch, CEO of New Era Cap and President of the New Era Cap Foundation.

This space for cancer patients offers pretreatment haircuts, wig and head covering selection support, wig styling, inpatient or outpatient head shaving, helpful information about hair loss during cancer treatment and more.

"The New Era Cap Foundation Elevate Salon is where patients and families can find comfort, support, connection and guidance in navigating hair loss through their cancer journey," said Rebecca Colville, manager of the salon and resource center. "We are grateful that patients will have access to these important services for years to come."





These patients all utilized the services at the New Era Cap Foundation Elevate Salon.



Kimberly

“They’re professionals and they’ll help you pick out a wig that looks like your style. They have a catalog to look through. They also have hats and caps, not just the wigs. It’s worth the trip.”

“You see the list of the names of the donors. That people are willing to donate, either they had someone go through cancer or they did it out of the goodness of their heart, is pretty amazing. It kind of gives you chills.”



Paul



Jerri

“After the first round of treatment, within three weeks, my hair started falling out in clumps. So, I told my daughter, ‘Just shave it off.’ ... With this last bit of chemo, my hair got very, very thin. So, I stopped into the salon, and they were able to help me.”

“I have never been to a place where EVERYBODY speaks to you. From the people who manage the garbage to the kitchen staff to the doctors, it’s overwhelming to think about it. That’s the spirit of this place.”



Annette



Vada

“Vada’s biggest fear was losing hair and feeling different from her peers. ... For her to be able to put on a wig and leave the house is huge, because otherwise, she wouldn’t. Once we got her wig and she knew people weren’t going to stare at her, it gave her confidence.”

– Analisa, Vada’s mom

When Mission Meets Business

At the Roswell Park Alliance Foundation, one person can spark change, but it's amazing what can happen with the support of a team. When a community of dedicated individuals and organizations work together, it's possible to make a lasting impact on our mission to end cancer.

The support of corporate partners goes well beyond financial contributions. They lend their expertise, resources and networks to amplify our mission, helping us reach more people and change more lives.

Here's a glimpse at some of the collaborations that help us continue to make a difference:



*Desmond Benimoff,
2-time pediatric cancer survivor*

Grants

Hyundai Hope on Wheels

For the eighth year, we were awarded a \$100,000 Hyundai Impact Award Grant to continue our long-standing fight against pediatric cancer. This year's grant supports pediatric palliative care and pain management.

Univera

Univera knows the importance of regular mammograms and how vital the program Esperanza y Vida is in ensuring our Spanish-speaking neighbors get theirs. Thanks to a generous grant, EyV will train more community health advocates to reach Spanish speaking women in sharing what they need to do to be screened for cancer.

Highmark

Last September, Roswell Park's mobile lung cancer screen bus, EDDY, was honored at the Bright Blue Futures Awards, which promote advocacy and fairness in access to healthcare. When EDDY makes a trip to any one of 49+ community locations, residents learn about their risk for lung cancer, learn about the importance of lung cancer screening — and can get screened — all in one place.

M&T

M&T wanted to help EDDY reach first responders and individuals in Niagara County to learn about lung cancer and lung cancer screening. To make sure this lifesaving service was available for all, M&T provided a generous grant that will help more people get screened.





*When a community of dedicated individuals
and organizations work together,
it's possible to make a lasting impact
on our mission to end cancer.*

Campaigns

Crosby's

Roswell Park's very own Dr. Georgy Paragh reached customers on the small screen of Crosby's gas station TVs in May to share tips on avoiding skin cancer. Through this campaign, Crosby's and their community raised over \$66,000 toward skin cancer research!

(pictured top left)

Buffalo Sabres

Whether the Sabres are visiting Roswell Park to make patients' days brighter or taking to the ice to raise money for cancer research, this partnership is truly about the patients. Every year, several events raise funds for cancer research including Catwalk for Charity, Bald for Bucks and Hockey Fights Cancer.



Batavia Downs

For the first year, Batavia Downs hosted two events to raise funds for our Igniting Cancer Breakthroughs campaign. Through their "Night at the Races Event," a meat raffle and a special drink called the Car-Tea, the community raised over \$34,000.

26Shirts

Throughout the year, Del Reid and his company, 26Shirts, raised \$9,000 to provide pediatric patients and their families with happy memories and support during their cancer journey. When customers purchase select items from 26Shirts, they contribute to the fight to end cancer.



Moe's

Taco 'bout a delicious way to fight cancer! Once again, Moe's Southwest Grill donated a portion of each family meal kit during the Buffalo Sabres season and raised nearly \$10,000.

Saving Some Butts

When Lindsay Riggs, also known as @Buffalovebirds online, was diagnosed with colon cancer, she knew she wanted to make a difference for others like her. In March, she rallied nearly 50 local businesses to "Save Some Butts" in a campaign that raised over \$17,000 for young adult colon cancer awareness.

Sponsorships

Upstate Pharmacy

For the third year, Upstate Pharmacy partnered with us to match donations given during Give 716, a day of online giving hosted by the Buffalo Sabres and the Buffalo Bills. Together, they donated \$23,000 to the Igniting Cancer Breakthroughs campaign to fuel innovative cancer research.

Pharma partners

Bristol-Myers Squibb

The Bristol-Myers Squibb Foundation aims to help those in our communities who need it most by expanding healthcare access. This year, Rodney Haring and his team were awarded a grant to help colleagues at the University of New Mexico

Native American Policy and Budget Institute educate Puebloans of New Mexico on their risk of lung cancer in ways that stay true to Puebloan guiding principles.



Care Beyond Medicine

At Roswell Park, our world-renowned researchers strive to change the way we treat and understand cancer. With one foot in the future, we still remain committed to the present, in providing the best possible care to patients today.

That care goes beyond medicine. The team at Roswell Park aims to treat the whole patient, encompassing mental, emotional and spiritual wellness, as well. That's where our quality-of-life programs come in.

Thanks to your support through fundraising events like Ride for Roswell and IceCycle and from supporters like Kids Just Want to Have Fun, the Roswell Park Alliance Foundation is currently funding 53 quality-of-life programs.

Quality-of-life programs significantly enhance the patient experience in a variety of ways, from mentorship to exercise, transportation and everything in between. We'll walk you through a few of the unique programs offered at Roswell Park.

Patients supporting patients

Going through cancer treatment can feel isolating, but at Roswell Park, we want our patients to know they are not alone. The donor-funded cancer coach program is a great tool in getting that message across. Through Roswell Park's

cancer coach program, patients are matched with people who have survived a similar diagnosis. A cancer coach can provide a unique level of empathy and understanding by sharing their own experiences. They give patients a valuable outlet and source of comfort by being available to listen and answer non-medical questions.

Personalized care

The Older Adult Oncology Program launched in 2024 and offers focused evaluations for patients aged 65 and older, promoting the use of physical therapy, nutrition assistance and complex decision-making support to optimize their cancer care journey.

"Age is a number, but aging is a process," Dr. Carozza explained. She shared that 70% of all cancer patients are 65 years of age or older. **"We need to stage the aging in the same way we're staging the cancer to provide the best care for patients and think about each individual person and the things they bring to the table. Just because someone is a certain age doesn't tell me anything about them. I don't treat numbers. I treat people."**



**QUALITY OF LIFE
PROGRAM**
FUNDED BY DONATIONS

Morale boosting

Stepping into a cancer center can feel overwhelming for patients and their family members, but donors like you help create pockets of comfort and joy during their time at Roswell Park. For example, the artists-in-residence program specializes in visual arts, dance and music throughout the inpatient areas.

"They must take happy pills here," joked Bill O'Shei, a patient reflecting on the staff at Roswell Park. "The art, the music; after ten years, this has become a home."

Additionally, donors also fund bedside attendants to assist with everything from meals to personal care.

Comfort at the forefront

One way donors provide comfort to patients is through funding mastectomy pillows in the breast clinic. These pillows, endearingly referred to as, "Your breast friend," support patients who are recovering from a variety of procedures including breast cancer surgery, breast reconstruction, breast augmentation, heart surgery, mastectomy or lumpectomy. Thoughtfully designed, these padded pillows enable a more restful sleep and provide comfort while driving with a seatbelt.

Programs like the few listed above, as well as dozens of others, are essential to patients and their families as they navigate the challenges that come along with a cancer diagnosis. With your support,

Roswell Park can sustain and grow its offerings to ensure each patient has resources available to ease the burden this disease may bring.





Funding the Next Cancer Breakthrough

The difference between a great idea and the next breakthrough is funding. Roswell Park is home to some of the brightest minds in cancer research, and it takes donor dollars to take their ideas from the bench to the bedside. That's where Roswell Park's Scientific Advisory Committee (SAC) comes in.

Donations to the SAC initiative provide seed funding for new projects and can be made to fuel research for a specific type of cancer. Researchers submit their applications to compete for donated funds and an internal, objective committee decides which projects receive funding.

Here are just a few of the projects funded within the last year.

Targeting specific protein in breast cancer metastasis *studied by Dr. Liu*

Metastasis is the leading cause of death among breast cancer patients with limited treatment options. This project aims to understand the role of a critical modification on a key protein that drives breast cancer metastasis to develop a new strategy to halt metastatic progression. The long-term goal is to identify new therapeutic targets and develop novel therapeutic approaches to treat metastatic breast cancer.

E-cigarette vaping and cigarette smoking cessation *studied by Dr. Kasza*

Cigarette smoking causes over 480,000 deaths in the United States each year and is responsible for one-third of cancer deaths. This project will study the effects of nicotine concentration and flavors in E-cigarettes on adults transitioning away from cigarette smoking.

Understanding Drug Resistance in AML *studied by Dr. Sung*

Acute myeloid leukemia (AML) is a fast-growing blood cancer. Many patients with AML have changes in a protein called FLT3, which makes the disease more aggressive. While current treatments target FLT3 and can be effective, the cancer often comes back. This study is looking at how a gene, called RAS, helps the cancer resist these treatments. By understanding this process, we hope to find new ways to stop resistance and make treatments work better for patients.



Uncovering therapeutic avenues to target PDAC
studied by Dr. Alam

Pancreatic ductal adenocarcinoma (PDAC) is a devastating disease with a five-year overall survival of only 13%. Researchers aim to understand the role of the exocytosis pathway in driving PDAC progression to find new ways to target immunosuppressive type 2 immune to perturb PDAC progression.

Low-Dose Psilocybin Therapy for Chronic Cancer Pain
studied by Dr. Alexander

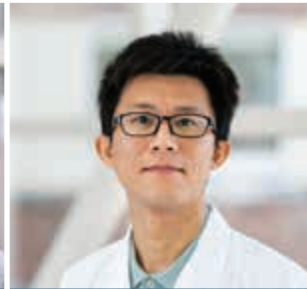
Cancer-related pain affects the majority of cancer patients and significantly impacts quality of life. This study will evaluate the psychedelic psilocybin as a potential novel treatment for cancer-related pain. This study will gather essential data for the design of future trials as well as insights into potential mechanisms of low-dose psilocybin.

*The difference between
a great idea and the
next breakthrough is funding.
Roswell Park is home to some
of the brightest minds in
cancer research, and it takes
donor dollars to take
their ideas from the bench
to the bedside.*

In addition to these studies, here are other grants awarded to Roswell Park researchers thanks to your support last fall.



How photodynamic therapy enhances anti-tumor immunity and reduces clonal mutation to treat **non-muscle-invasive bladder cancer**, studied by Dr. Brackett.



A genetic screen to investigate the drivers of **prostate cancer** lesions in the bone, studied by Dr. Wang.



Repurposing Tamoxifen with Pegylated Liposomal Doxorubicin to treat **Metastatic Triple Negative Breast Cancer**, studied by Dr. Das.



Overcoming tumor microenvironment-mediated immunosuppression in **High-Grade Serous Carcinoma**, studied by Dr. McLean.



The development of Tyrosinase-specific prodrug for selective MDM4-targeting and ferroptosis induction in **BRAF-resistant melanoma**, studied by Dr. Wang.



Are Indigenous American genetic ancestry and metabolic syndrome driving clear cell **renal cell carcinoma** somatic mutations in Hispanic patients? Studied by Dr. Batai.



Using home-base respiratory muscle training to improve **lung health** in smokers, studied by Dr. Ray.



Overcoming tumor antigen heterogeneity in **ovarian cancer** using multi-armed BiTE-secreting T cells, studied by Dr. McGray.



Elucidating mechanisms of CD28 downregulation with **age and cancer**, studied by Dr. Olejniczak.



Giving Every Child A Fighting Chance



ROSWELL PARK
COMPREHENSIVE CANCER CENTER

Honoring 25 Years of Giving Every Child a Fighting Chance

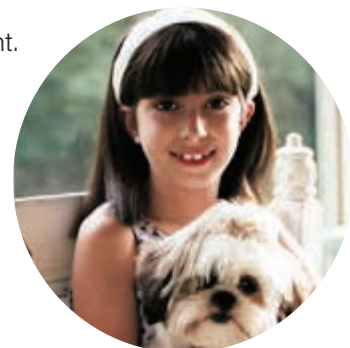
The Courage of Carly Fund is dedicated to raising funds specifically for our youngest fighters — pediatric cancer and blood disorder patients. **Donations to Courage of Carly provide financial support to families, support promising scientific research and create memories for the children who need it most.**

Throughout 2024 and early 2025, Courage of Carly provided more than 35 event opportunities for pediatric patients and their families. Those events included everything from a Build-a-Bear party to a Taylor Swift-themed cookie decorating day to a teen dinner at Chef's restaurant to an opportunity to walk in the procession during Ride for Roswell's Celebration of Hope to the Pediatric Evening of Remembrance and so much more.

"I have a great support system surrounding me, and I have so many people who are rooting for me and I just think that there's a mind-body connection and if you're positive, you'll get through it better. I think that's been true for me,"

said Sophia Baudo, a Courage of Carly member and Roswell Park patient.

Courage of Carly honored its 25th anniversary in March. Carly was diagnosed with brain cancer at just eight years old. She founded Carly's Club (Courage of Carly's first name) on her ninth birthday. She passed away in 2002 at age 11. Donations to Courage of Carly help Roswell Park fulfill Carly's wish to provide hope to children facing cancer.







Roswell Park President and CEO Dr. Candace Johnson with West Herr President and CEO Scott Bieler and Leecia Eve, Chair, Roswell Park Board of Directors



A record-breaking Ride for Roswell

The Ride Community came out in big numbers in 2024. Thousands of riders, donors and volunteers gathered at the University at Buffalo's North Campus to make a difference for cancer patients everywhere.

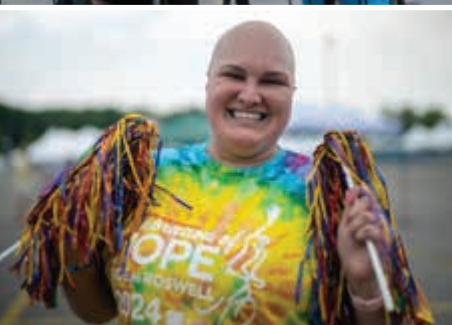
Here's a look at the highlights:

- ◆ More than 8,200 riders joined us in the mission to end cancer.
- ◆ 777 of those riders identify as patients or survivors.
- ◆ 816 teams joined the cause, with sizes ranging from two to 100 people.

The 2024 Ride for Roswell, presented by West Herr Automotive Group, raised an amazing **\$5.9 million for cancer research, new clinical trials and quality-of-life programs** at Roswell Park Comprehensive Cancer Center.

This incredible impact would not have been possible without the generosity of our presenting sponsor, West Herr Automotive Group.

Ride Weekend commenced with Celebration of Hope (COH), an emotional program that honors the collective spirit of Roswell Park. On Saturday, riders had nine route options to choose from, including the Canada route. Both days were filled with hope, reflection and energy toward the fight against cancer.



2024 Ride for Roswell **Torch Lighter:** Kelly Englert Flak

Kelly Englert Flak kicked off Ride for Roswell by lighting the ceremonial flame at Celebration of Hope. Kelly was the first Roswell Park employee to be honored as the Torch Lighter. As a nurse, she's dedicated her life to serving cancer patients, but that's far from her only connection to the cause.

Kelly is a cancer survivor and a grieving mother who lost her daughter, Kaitland Sneed, to this disease.

"I want people to remember her name and I want people to know she fought, and she did not let cancer take from her, not even the last year. She fought, she persevered and she was Kaitland. She was not going to let cancer steal from her," said Kelly.

Kelly lives the mission of Roswell Park every day, and she stands by this notion: cancer can't win. That's why she supports the Ride.

"Without research, I wouldn't be here. Right now, I am on a medication that was only approved four years ago by the FDA. Four years ago, had I been at the beginning of my journey and had that mutation, I wouldn't be sitting here right now, and I wouldn't have been able to light that torch. So, I am thankful to Roswell Park and its research and to everybody who helps donate and put money and funding toward that."

*"Without research,
I wouldn't be here.
Right now, I am on a
medication that was only
approved four years ago
by the FDA. Four years
ago, had I been at the
beginning of my journey
and had that mutation,
I wouldn't be sitting
here right now,
and I wouldn't have been
able to light that torch."*



10 YEARS
**ONE MISSION.
END CANCER.**



EMPIRE STATE RIDE
TO END CANCER

Empire State Ride Celebrates **Incredible Milestone**

Empire State Ride (ESR) road warriors made history on a milestone year. In addition to raising \$2.2 million in 2024 alone, ESR also hit a collective \$10 million raised in 10 years. 2024 riders and ESR alumni took part in a special 10th anniversary celebration in Weedsport, looking back on a decade of impact.

ESR is a seven-day bicycling event with one mission: to end cancer. Participants cycle more than 500 miles, from New York City to Niagara Falls. Each road warrior commits to raising at least \$3,500 for cutting-edge research at Roswell Park Comprehensive Cancer Center.

"I can't tell you how important the dollars raised through ESR are for research at Roswell Park, for patients, for clinical trials, for new medicines and for all the really amazing things that researchers are doing to help our patients," said Joyce Ohm, PhD, Chair of Cancer Genetics and Genomics at Roswell Park and six-time ESR participant.

The event began in 2014 when ESR founder Terry Bourgeois took on the trek by himself. Since then, it has grown into a movement with around 300 participants annually and a worldwide impact on cancer care.

"\$10 million in ten years, and we're just getting started," said Bourgeois. "If you can find purpose in your life to do something like this for a week, that's the draw. You can make a difference. For me, it never gets old."





"I can't tell you how important the dollars raised through ESR are for research at Roswell Park, for patients, for clinical trials, for new medicines and for all the really amazing things that researchers are doing to help our patients."

- Joyce Ohm, PhD, Chair of Cancer Genetics and Genomics at Roswell Park and six-time ESR participant






EMPIRE STATE RIDE LONG ISLAND

TO END CANCER

Roswell Park's Mission Gaining Speed Downstate

Empire State Ride Long Island, led by event founder Steve Mars, returned for a fourth year on June 8, 2024. Hundreds of cyclists pedaled through the Town of Oyster Bay to raise funds for clinical cancer research and trials. The event benefits Roswell Park Comprehensive Cancer Center and Catholic Health Long Island — a partnership through the Roswell Park Care Network. The 2024 event brought together 400 riders and raised more than \$100,000.

"Success is driven by the overwhelming community support from riders, volunteers and our partners including Nassau Financial Federal Credit Union, Man Cave Health, the Town of Oyster Bay, the Oyster Bay Chamber of Commerce and so many more," said Steve Mars, event founder. **"Every summer, we rally together to celebrate life and spread hope for cancer patients on Long Island and across the state thanks to this unique collaboration."**





*"I am going to win, cancer.
In a surreal moment, my family
and friends came to cheer me on."*

- Lindsay, colon cancer patient

Five Years of IceCycle

icecycle
TO END CANCER

IceCycle, led by event founder Bill Loecher, broke several records in 2025, including the number of participants and dollars raised. Together, with more than 1,400 riders, IceCycle raised more than \$735,000 for Roswell Park.

This uniquely Buffalo event, where participants cycle on the ice in 45-minute sessions led by local studios, continues to grow and gain momentum. The fifth anniversary event returned to Buffalo RiverWorks with the same incredible impact and energy. New additions to the event included free exercise classes held inside during the weekend, and a new theme ride: In Our Swiftie Era.

"Events don't get any better than this. There's nothing like it," said Mike Ball, Vice President of Community Affairs, Highmark Western and Northeastern New York.

Jaime Ruggiero became IceCycle's all-time top fundraiser, raising \$17,150 for the cause. During the event, she said with tears in her eyes, "I'm riding for my husband Joe. We have been at Roswell Park all day today, and we found out he's in remission."

IceCycle will return March 6 and 7, 2026.





*"I'm riding for my husband Joe.
We have been at Roswell Park
all day today, and we found out
he's in remission."*

*- Jaime, IceCycle participant and
all-time top fundraiser (pictured top right)*





*"The truth is,
cancer isn't going
away, but our
ability to triumph
over its effects is
something I want
to be a part of."*

*- Brice, father of James,
pediatric cancer patient*



Hope Starts with Schools

schools against **cancer**

FOR ROSWELL PARK

Schools Against Cancer allows students of all ages to get involved in Roswell Park's mission to end cancer. This program, which launched in 2023, empowers school communities to take on a challenge that fits their unique interests and abilities.

In the 2024-2025 school year, 50 schools took part in Schools Against Cancer by hosting fundraisers for Roswell Park. From selling cookies to collecting donations at sports games, hundreds of students from elementary school through college learned the impact they can make by doing their part to help cancer patients.

The Tradition of Bald of Bucks



Bald for Bucks, a program which falls under the Schools Against Cancer umbrella, is unique to WNY. Schools and businesses come together to cut, shave or style their hair

while making a difference. Participants in Bald for Bucks not only stand in solidarity with cancer patients, but they also raise funds for Roswell Park.

Jar Wars: A coin collection with a friendly sabotage twist!

SCHOOLS AGAINST CANCER PRESENTS:

JAR WARS



In honor of World Cancer Day, Schools Against Cancer launched **Jar Wars** in February 2025. This month-long challenge created a friendly competition between the grade levels at a given school and against other schools in Western New York.

In 2024-2025, Schools Against Cancer, including Bald for Bucks, raised more than \$290,000 for Roswell Park.





100 Holes of Golf at Wanakah Country Club



Summer Splash

Team ROSWELL

CHAMPIONS FOR CANCER CURES

The Team Roswell community is comprised of everyday people who use their unique skills and interests to become champions for cancer cures. This year, Team Roswell event coordinators hosted an impressive 55 events, bringing hope to cancer patients everywhere.

100 HOLES OF GOLF AT WANAKAH COUNTRY CLUB

\$120,872 for Courage of Carly Fund

Simon Bennett held the first 100 Holes of Golf fundraiser in 2016, tying his love for the sport with the cancer cause. The event has grown organically year over year and has become a summer staple for golfers here in Western New York. This year's chairs, Simon and Thomas Youngman, made the ninth annual 100 Holes of Golf a success.

SUMMER SPLASH

\$60,000 for Courage of Carly Fund

Shannon Tedesco led a committee of dedicated volunteers to host another incredible Summer Splash. This event, which Shannon describes as a wedding without the bride and groom, is a waterfront cocktail party that closes out the summer.

A TASTE FOR LIFE

\$52,000 for lung cancer research

The 13th annual A Taste for Life, hosted by Susan and Steven Roney and Sharon and Tom McCann, brings guests a sensational evening that includes wines, craft beers and sweet and savory treats to support groundbreaking research and advance lung cancer treatments and therapies at Roswell Park.



A Taste for Life



Buffalo Goes Gray



Saddle Up for Roswell



Vullo Boys Walk for a Cure



Carry On for Karen

Salsa for a Cure



BUFFALO GOES GRAY - MISSION POSSIBLE

\$30,000 for brain cancer research

Alyson Walter and the Buffalo Goes Gray organization hosted the "Mission Possible" gala to raise funds for brain cancer research at Roswell Park. The event took place at The Powerhouse and featured a silent auction, basket raffles, photo booth, music and more. Together, more than 300 guests raised \$30,000.

SADDLE UP FOR ROSWELL

\$26,631 for Roswell Park's most pressing needs

This event has been going strong for 19 years, rallying equestrian enthusiasts from across Western New York for a show at Chestnut Ridge Equestrian Center.

HOCKEY MOM FOUNDATION GOLF TOURNAMENT

\$25,000 for pediatric palliative care partnership

The Hockey Mom Golf Tournament returned for a ninth year at Glen Oaks Golf Club. Led by John Duke, participants golfed 18 holes and enjoyed dinner, a silent auction and more.

VULLO BOYS WALK FOR A CURE

\$24,070 for Igniting Cancer Breakthroughs

For six years, Preston and Charlie Vullo have hosted a small community fundraiser for Roswell Park. In 2023, the event grew to include a bake sale, basket raffle, bounce house, food trucks and more, bringing them close to their lifetime fundraising goal of \$100,000. This year, the fundraiser benefited the Igniting Cancer Breakthroughs campaign.

CARRY ON FOR KAREN BASKET RAFFLE

\$18,000 for breast cancer research

BETTY BE BRAVE

\$16,000 for pancreatic cancer research

F MELANOMA GOLF TOURNAMENT

\$13,661 for melanoma cancer research

SKI 4 A CURE

\$12,500 for most pressing needs

POWER IN PINK

\$10,027 for breast cancer research

SALSA FOR A CURE

\$10,000 for most pressing needs



Ski for a Cure



Hockey Community Fights Back Against Cancer

The 11 Day Power Play has become a strong, uniquely Buffalo tradition for hockey players across Western New York. The 2024 event took place from June 21 – June 30, with more than 2,600 skaters — men, women and children of all skill levels.



Participants took to the ice in two teams every three hours for 11 straight days. **Together, they raised \$1.6 million for the cause**, bringing the total overall to more than \$11 million since The 11 Day Power Play, Inc. was founded in 2016.

The first-ever The 11 Day Power Play Team Science Award was announced in November and opened up applications for Roswell Park research teams to apply for a \$1 million grant.





"It's a natural fit for our organization, with an event rooted in teams, to support this unique opportunity to fuel team science at Roswell Park," says Amy Lesakowski, co-founder of The 11 Day Power Play, Inc.

"As a cancer survivor myself, I have first-hand experience in how innovative cancer treatment and clinical trials save lives. I truly believe that I would not be here today if it weren't for Roswell Park and I hope that the team science award fuels the next cancer breakthrough to save more lives like mine."

Roswell Park's Dr. Brian Betts and his research team received the inaugural \$1 million award to advance research on acute myeloid leukemia. Four other research teams each received \$250,000 from the Roswell Park Alliance Foundation to recognize their outstanding research studies.



"I knew I was strong, but I underestimated how strong I could be. I couldn't have done any of this without my strong support system."

- Kendall, hodgkn's lymphoma patient



A Gift Beyond a Lifetime: Honoring Legacy Donors

Every legacy tells a story. Our legacy donors know that their vision and generosity will ensure that our mission continues long after they are gone, providing hope, resources and life-changing breakthroughs for future generations.

Through their planned gifts, these remarkable individuals are planting seeds today that will blossom far into tomorrow. Their commitment is a testament to the values they hold dear and an inspiration for all of us to consider how we, too, can leave a lasting impact.

Here are just a few stories of donors who have chosen to become Dr. Roswell Park Society members.

Shirley Struchen's connection with Roswell Park started more than 60 years ago. As a young girl, she came to Roswell Park with her mom while her grandmother received treatment. Her mother, husband and even herself also battled cancer over the years.

Shirley (pictured bottom left) established the Whipple Family Endowed Fund to support education and training programs at Roswell Park. To extend her impact, Shirley is leaving a legacy gift to grow her endowment in hopes of strengthening collaborations between Roswell Park and regional education institutions.

Shirley encourages anyone who's been touched by cancer to give back.

"It's exciting to hear the progress in science happening at Roswell Park and giving back to that work helps others. You never know when your family might need something but also, it can be a very positive and healing action to take," she explained.



Sandra Cumming started her career with Roswell Park as a nurse in 1976. During her 11 years caring for patients, she built strong relationships.

After retiring, Sandra (pictured at top) decided to Remember Roswell in her will because working meant so much to her, especially her connections with patients. She always wanted to be the best she could be for her patients and felt she truly made a difference.

"I believe Roswell Park has the best and brightest doctors and nurses in the field and that they are making groundbreaking research efforts every single day so they have access to things that no one has access to elsewhere," Sandra explained.

Sandra's leaving a legacy gift with two hopes: first, that Roswell Park continues its research and discoveries for patients and second that people continue to support Roswell Park's work like she is.

"If you've been affected by cancer, and most of us have, whether it be a friend, a family member, even maybe a neighbor, consider Remembering Roswell because it is important work that they do here every day," Sandra expressed. "The more people who get involved, the easier it is for Roswell Park to continue the wonderful work that they've been doing."



To learn more about how you can leave a legacy, visit roswellpark.plannedgiving.org.



Roswell Park Alliance Foundation

Board of Directors

Gwen Arcara
Scott Bieler
Vice Chair
Nancy Boulden
Terry Bourgeois
Larry Castellani, Jr.
Ross Eckert
Chairman

Eric Feldstein
Steve Finch
Michael T. Gacioch
William T. Gacioch
Anne D. Gioia
Secretary
Donna M. Gioia

Katie J. Hamister
William Inman
Pamela R. Jacobs Vogt
Michael Lawley
Patrick P. Lee
Judith Lipsey
Michael J. Montante

James D. Newman
Treasurer
Dave Pietrowski
Luis A. Rodriguez, Jr.
Christine Standish
Lee C. Wortham

President's Advisory Cabinet

Lawrence Castellani, Sr.
Ann Celani
Russell D'Alba
Scott Friedman, Esq.

Dan Gernatt
Philip Hubbell
Gerald Lippes
Patrick Marrano

Daniel Misko
Trudy Mollenberg
Nancy Naples O'Neill
Thomas H. O'Neill, Jr.

Bruce Popko
Jerry Saxe
Buford Sears
Robert Weber

Alliance Community Board

Julie Alford
Don Benson
RoseAnn Berardi
Molly Beecher Bohen
Terry Bourgeois
Chairman
Chris Burns
Carole Ann Collard
Chuck Collard
Tyrone Crawford
Brian Duffett
Chris Eberle
Mitch Flynn
Jordan Joseph Fogel
Lynn Gates

Erin Geiger
Caroline Gilfillan
Anne D. Gioia
Chair Emeritus
Donna M. Gioia
Chair Emeritus
Kathleen Graitm
John Hannon
Julia Hilliker
Fran Hornung
Dillon Joseph
Linda Kahn
Kiersten Lawley
Cyndi Leonard
Amy Lesakowski

Mike Lesakowski
Ruth Lipsitz
Bill Loecher
Chris Lorenz
Courtney Mailhot
Mark Manders
Dana Marciniak
Steve Mars
Sean McCrone
Shane Moore
Jonathan Olsen
Kathleen O'Neil
Allison Joseph Pendleton
Scott Philbin
Kelly Rehak

Susan Roney
Sally Russell
Rich Sanders
Suzy Sears
Emily Smaldino
Leanne Stepien
Joanne Tebeau
Shannon Tedesco
Anne Virag
Mary Kate Vivacqua
Blake Walsh
Earl V. Wells III
Annie O'Neil White

Staff Leadership

For Fiscal Year 2024-25

Cindy Eller
Executive Director

Tammy Lightcap
Vice President of Finance and Operations

Kate Kaming
Vice President of Development

Judith Epstein
Director of Grants & Foundation

Andrea Gregory
Director of Special Events Fundraising

Kim Guido
Director of Individual and Planned Gifts & Donor Stewardship

Jennifer Hickok
Director of Corporate and Sports Partnerships
& Board Relations

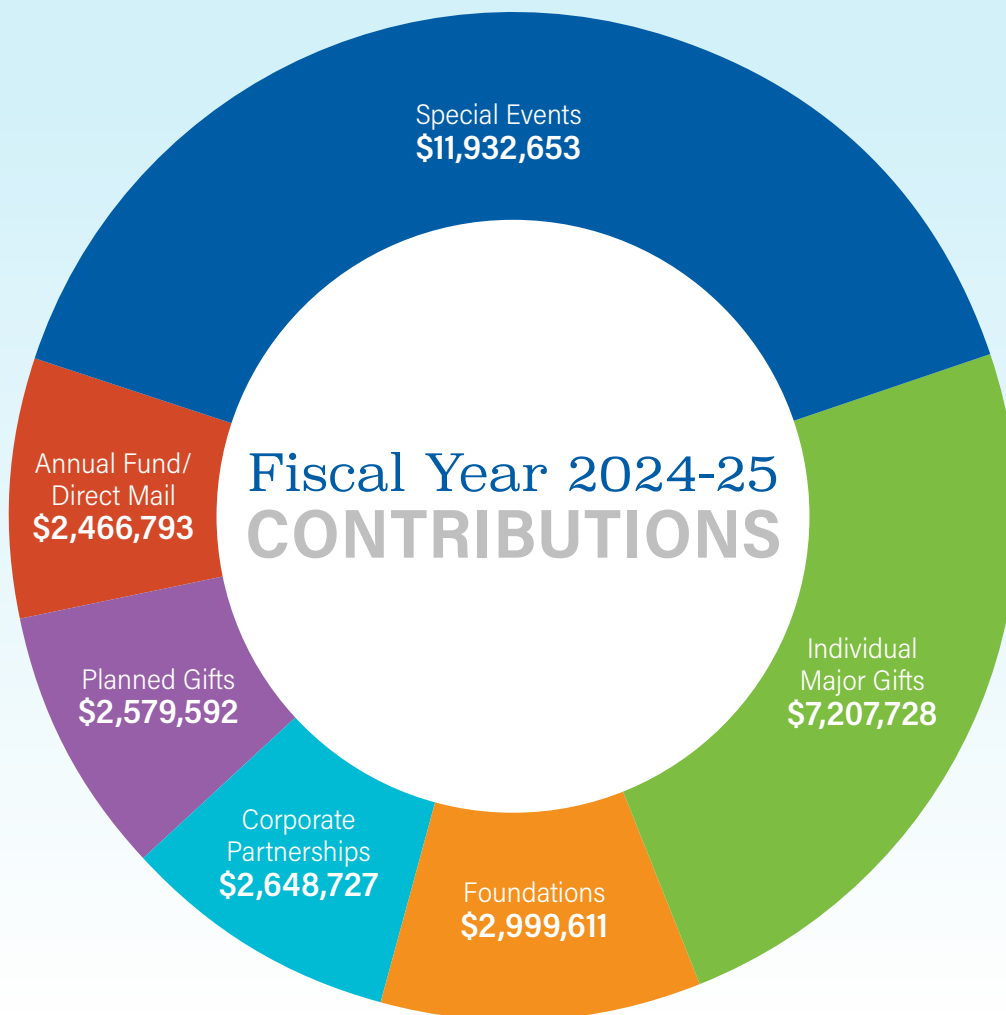
Michelle Ostrander
Director of Development Marketing & Communications

Kim Sweeney
Executive Director of Patient Concierge Services



Financial Information

Fiscal Year 2024-25



- Special Events
- Planned Gifts
- Annual Fund/Direct Mail
- Individual Major Gifts
- Foundations
- Corporate Partnerships




The Roswell Park Alliance Foundation is proud to receive an unmodified audit opinion on our 2024-25 fiscal year audited financial statements.

A full financial statement is available by scanning the QR code or contacting Vice President of Finance and Operations Tammy Lightcap at 716-845-8033 or tammy.lightcap@roswellpark.org.



"The thing that makes Roswell Park so great is that they're preeminent in the research field. The reputation is great, but it's only great because they care so much about the patients. Any effort that somebody wants to give, any money they want to raise or how many miles they want to ride has got to be fueled by that feeling that this is worthwhile. And of course it is."

- Tracey, glioblastoma patient



Together,
we are rewriting
the story of cancer.



Elm & Carlton Streets | Buffalo, New York 14263 | 716-845-4444 | RoswellPark.org/Giving

The Roswell Park Alliance Foundation has received the ranking of 4 out of 4 stars from Charity Navigator, America's largest independent charity evaluator. This is the eighth consecutive year that the Alliance Foundation has earned Charity Navigator's highest possible rating.

