



ANNUAL REPORT 2022 - 2023

"You've got to live
for today. Living in the
now is so important,
you have to enjoy
every moment."

- Grace Diaz, 62
Lung cancer



JIM NEWMAN

CHAIRMAN OF THE BOARD



2019-2023

**\$92.4 MILLION IN GRANTS TO
ROSWELL PARK COMPREHENSIVE CANCER CENTER**

**\$126.2 MILLION
CONTRIBUTED**

**\$50 MILLION RELEASE THE
BREAKTHROUGHS CAMPAIGN**

**\$18.8 MILLION IN
INVESTMENT EARNINGS**

**150,000+ PATIENT'S
LIVES IMPACTED**

Thank you
FOR YOUR LEADERSHIP
& DEDICATION

— MARCH 31, 2023 —

*This report is an in-house production.
Stories: Michelle Ostrander and Joan McDonough
Graphic design: Amy Prior
Photography: Ben Richey, Brittany Sikora,
Thomas McBride and Jim McCoy*

After four years as Chairman of the Roswell Park Alliance Foundation, I am thankful to all of you to have had the opportunity to serve in this role. As you already know, Roswell Park Comprehensive Cancer Center is an amazing place. The team is first-class, the patient care is incredible, the research is awe-inspiring and the mission to cure cancer is noble and worthy.

During my time, I have been immensely blessed to have the chance to help advance our cause. The mission to end cancer as we know it is very close to my heart, as I know it is for many of you. I'm grateful to have learned a great deal about the daunting task facing cancer researchers and their innovative approaches, the resilience of cancer patients and the hope that goes hand-in-hand with treatments that were unimaginable just 20 years ago.

I'm proud to say our donor community recently celebrated the end of a successful Release the Breakthroughs campaign, bringing in \$50 million over four years to advance immunotherapy at Roswell Park. That funding has already launched so much you'll read about inside and will continue to make an impact for our patients. Looking ahead, we're excited to move into a brand new campaign to solidify Roswell Park at the forefront of cellular therapy advancement: **Igniting Cancer Breakthroughs**. Keep an eye out for more about that initiative this fiscal year.

May we all remember how fortunate we are to have the world-class care associated with Roswell Park right here in Buffalo. We as a community should be thankful; I know I personally feel incredibly lucky.

As I close my time as Chairman, I would like to thank the Alliance Foundation team members for all the hard work they carry out every day to provide the resources for everything we do. They are passionate, talented and driven, and their work makes a difference in the lives of countless patients and loved ones.

Finally, I want to wish the new Chairman, Ross Eckert the best of luck. He is without a doubt the right person for the job and will accomplish wonderful things for and with Roswell Park.

— Jim Newman
Chair, Board of Directors
Roswell Park Alliance Foundation



Jim Newman
Chair, Board of Directors
Roswell Park Alliance Foundation



We're ready to Release the Breakthroughs

For the past four years, you have given crucial support toward our Release the Breakthroughs campaign to advance immunotherapy and give hope to countless patients and loved ones. With you behind us, investigators and clinicians have been set up for success to continue expanding the applications for these innovative treatments for patients of all cancer types.

Roswell Park has assembled a team of industry leaders to execute the innovative work in cell therapy and immunotherapy to ensure your contributions are making the maximum impact for our patients and the future of cancer care. Led by Deputy Director Renier Brentjens, MD, PhD, The Katherine Anne Gioia Endowed Chair in Cancer Medicine, this team will work seamlessly to bring innovative therapies from bench to bedside.

CAR T-cell Therapy

Roswell Park has been developing novel uses for CAR T-cell therapy, that can change the way we treat cancer. This work started in blood cancers and, thanks to forward thinking, patient-focused leadership at Roswell Park, will expand. These pioneering methods will generate increased demand for such unique clinical trials needed for a growing number of patients.

Marco Davila, MD, PhD, joined Roswell Park in June 2022 as Vice Chair for Cellular Therapies, Senior Vice President and Associate Director for Translational Research and The Dr. Youcef Rustum Endowed Chair in Translational Research. At Roswell Park, Dr. Davila is working to develop new cell therapy treatments and leads a team dedicated to developing new therapies for patients. He has a proven track record of success helping pioneer immunotherapies for leukemia and lymphoma and will now work on translating that success to solid tumors.

“Cellular therapy is in its infancy, but it’s already dramatically reshaping what we can achieve through cancer therapy. I’m incredibly excited about the work the team will do in the next few years — the time we are going to be able to give back to patients with even advanced cancers, the cures that are within our reach today.”

– Dr. Brentjens (left)

Cell Production Facilities

The need to produce genetically engineered immune cells to drive forward cell therapies and other immunotherapies will continue to increase as research accelerates and trials progress. Constructing additional clean cell production facilities will advance research programs and provide critical support for existing and forthcoming work. The expanded facility will support Roswell Park’s growing list of clinical trials, assuring a long-term positive impact on research and ultimately patients.

Yeong “Christopher” Choi, PhD, joined Roswell Park in April 2023 as Senior Vice President of Industry Partnerships and Technical Director of the Good Manufacturing Practice (GMP) facilities, sometimes more simply referred to as clean rooms. Dr. Choi will oversee the day-to-day operations and partnerships in the 14 new and 6 existing clean rooms.

Immune Monitoring Program

It is critical to determine if a treatment in clinical trial is proving to be effective against a patient’s cancer. Through the Immune Monitoring Program, Roswell Park will analyze on a deeper level how each trial treatment interacts with a patient’s complex immune system. Through this process, researchers will use state-of-the-art equipment and novel approaches to continue and propel their lifesaving work. Critical data related to immunotherapies will be unlocked so our clinicians can continue bringing hope to Roswell Park patients and their families.

Peter Maslak, MD, joined Roswell Park in March 2023 to serve as Vice Chair of Clinical Affairs and Director of the Flow Cytometry/Immune Monitoring Shared Resources Core. As director, he leads the Immune Monitoring Resource, which works to study a patient’s response to treatment to better understand the efficacy of therapies. With more than 30 years’ experience in hematology pathology and immunology, Dr. Maslak is working with researchers and clinicians across Roswell Park to find the very best methods to treat each patient.

These resources, which expand our deep understanding of immunotherapies, have been made possible by generous donors who are committed to the innovative research at Roswell Park. Your support is allowing us to amplify the ways we serve our current and future patients and shape the cancer landscape.



Dr. Davila



Dr. Choi



Dr. Maslak



Expanding opportunities for Roswell Park nurses

Cutting the ribbon to dedicate the Marie Bogner Center for Nursing Excellence. From left to right: Mary Ann Long, Dr. Jerry Yates, Karen Goodman, Dr. Candace Johnson, Maureen Kelly and Andrew Storer.

There are more than 700 nurses who have dedicated their careers to caring for patients at Roswell Park. These highly skilled individuals bring their expertise and compassion to work every day for the sake of the tens of thousands of people coming to Roswell Park in search of hope.

This year, Roswell Park celebrated the opening of the Marie Bogner Center for Nursing Excellence. Through a generous legacy gift, longtime Roswell Park supporter Marie Bogner provided for the complete renovation of a professional development space for our nursing staff.

Comprehensive care is what sets Roswell Park apart. The Marie Bogner Center for Nursing Excellence allows nurses to provide the latest integrated care to cancer patients in a profession that is changing and advancing at a brisk pace. The new center includes state-of-the-art devices and equipment in a realistic simulation lab environment.

"We want to be able to deliver the latest, the most advanced care to our patients," said Andrew Storer, PhD, DNP, FNP-C, ACNP-BC, FAANP, Vice President

and Deputy Chief Nursing Officer. "The technology, the science, the literature is changing so much that we have to provide education on an ongoing basis to ensure our nurses are delivering that when they provide care in patient care areas."

"This new space really demonstrates that there's a value placed on what nurses bring to the table at Roswell Park," said Mary Ann Long, RN, MS, Senior Vice President and Chief Nursing Officer. In honor of her impactful nursing leadership and dedication ahead of her 2023 retirement, Roswell Park staff from across the center generously donated to enable the creation of the Mary Ann Long Conference Room in the new center. Upon Mary Ann's retirement, Andrew was named Senior Vice President for Patient Care Services and Chief Nursing Officer.

Creating the Marie Bogner Center for Nursing Excellence with resources dedicated to professional development and advancement demonstrates Roswell Park's commitment to both nurses and patients. Nurses are in high demand around the globe.

"Nurses are the individuals who spend the majority of their time at the bedside. We want to not only educate nurses but empower nurses as well to be the best clinicians they can possibly be, the best patient advocates."

- Mary Ann Long

Placing an emphasis on their invaluable work at Roswell Park will offer a seldom seen opportunity for nurses striving to use their skills alongside other top clinicians here in Buffalo. It shows an intentional investment in their careers and contributions to medical care.

"Nurses are the individuals who spend the majority of their time at the bedside," Mary Ann Long said. "We want to not only educate nurses but empower nurses as well to be the best clinicians they can possibly be, the best patient advocates."

Taking this initiative one step further, donors have made it possible to create an endowment to provide the Marie Bogner Center for Nursing Excellence with a vital and stable source of funding to ensure the continuation and expansion of the program and maintain this core resource for our nurses for years to come. **The support of generous donors like you are making a profound impact on the advancement of innovative patient care at Roswell Park for decades to come.**





From left: Dr. Candace Johnson, Kathy and Scott Bieler, Joanne Bauer and Matt Lasher.

A new beginning for cancer care at the Scott Bieler Amherst Center



The Roswell Park Scott Bieler Amherst Center is opening this year to bring patients in the northern suburbs of Buffalo the same top-tier cancer care they can receive at the downtown Roswell Park Comprehensive Cancer Center campus.

After announcing the project and breaking ground in 2021, patients will soon be welcomed through the doors of the building named for longtime supporter Scott Bieler, President and CEO of West Herr Automotive Group, in recognition of his significant gift to the project and to the Roswell Park Alliance Foundation.

Routine screening, diagnostics, chemotherapy, radiology and clinical trials services will all be available at this new center, all in one convenient, comprehensive and welcoming location.

Scott Bieler and his wife Kathy have been dedicated supporters of Roswell Park for over 20 years. Scott has served on the Roswell Park Alliance Foundation board since 2002 and the West Herr Automotive Group has been an integral part of the Ride for Roswell as presenting sponsor for a decade.

"When a third of the Western New York population is going to have cancer in their lifetime, to me that's a critical statistic. That's why we wanted to help Roswell Park in such a big way," says Bieler. "With as many people as we serve every day across Western New York, and as many who work for us, we see cases of cancer every day. We realize there's a very high population density in that area, and are sensitive to how important it is for cancer patients to have their treatments and appointments close to home."

To learn more about the Bieler Amherst Center, visit www.roswellpark.org/amherstcenter.

Carly found community and strength to face her colorectal cancer in great part through the Young Adult Program at Roswell Park.



Improving patients' quality of life

At Roswell Park, we're committed to the care of the whole person. Our work doesn't begin or end at medical treatment. It encompasses the full spectrum of mental, emotional and spiritual wellness for our patients, as well. **When you support Roswell Park, you're making it possible for experts to run Quality-of-Life Programs that bring opportunities to our patients that provide hope, access and deep compassion.**

Just a few examples include Roswell Park's Transportation and Translation Services, the HLA Typing program, the Life Recorded program and the Fertility Preservation Program.

Roswell Park is committed to giving patients the best possible care. If those patients can't get to Roswell Park or have barriers to communication when they arrive, they can't receive the care they need. Powered by donor funding, **Transportation and Translation Services** helps our patients access critical cancer care who might not be able to do so otherwise. There's an increasing number of patients at Roswell Park who don't have reliable transportation and a growing population of patients in need of translation support, so now more than ever it's crucial to provide these services so everyone can have access to the best cancer care available to them

Before a patient receives a bone marrow transplant, they need to go through **human leukocyte antigen (HLA) typing** to find a donor with the best genetic match. This process is not typically covered by health insurance when a patient needs to find a donor who is not a familial relative. Through Quality-of-Life funding, made possible by the generosity of donations, patients have financial support through their HLA typing and transplant process, ensuring they find the best possible match for their best possible outcomes.

Oftentimes, due to the stress brought about by a cancer diagnosis, those affected may have a desire to unload their experiences through the gift of storytelling. The stories shared may cover a wide range of topics including love, family, career, hopes, fears, travels and other life adventures. Through the **Life Recorded Program**, those stories can be preserved. The heartfelt stories of Roswell Park patients are captured in audio or video format by Life Recorded staff and made available to participants to keep and cherish.

"I can't say that we would have been able to do this without Roswell Park's help."

- Cody Romanos



Blessing patients with the hope of new life

Some cancer treatments, while critical to rid a patient of their disease, can negatively affect their fertility. Around 400 young adults are diagnosed with cancer at Roswell Park every year. At the dedicated OncoFertility Clinic, experts help counsel patients on their fertility risks, assist with fertility preservation options and discuss medical management of menses during cancer treatment.

Approximately 45% of those patients do not have insurance coverage for that care, however. **Through Quality-of-Life Program funding, Roswell Park is able to use donor funds to help those patients navigate their fertility preservation options through the Fertility Preservation Program.**

Meghan Romanos was one of those patients. Through the careful monitoring of an autoimmune disorder Meghan

has, her doctors were able to identify what's commonly called smoldering myeloma. That brought her to Roswell Park so experts could help her to manage and monitor the condition which ultimately turns into multiple myeloma for most patients.

As a young woman who was hoping to one day raise a family, her Roswell Park care team informed her that experiencing pregnancy could put her body at much higher risk of developing this blood cancer. Because she came to Roswell Park for her care, Meghan was able to take full advantage of the donor-funded Fertility Preservation Program, providing her with financial assistance to go through with IVF.

Now, after a wonderful experience with surrogacy, Meghan and her husband Cody are parents to their 1-year-old son Cayden. They couldn't be more in love with their little boy and said they have Roswell Park donors and the comprehensive care available to thank.

"This program made our little family,"

Meghan said. **"Cayden wouldn't be here without it.** It's amazing to know there are people out there who are willing to help you build your family. This wouldn't have happened without these donors."

"I can't say that we would have been able to do this without Roswell Park's help," Cody said. "Our lives would look and feel completely different if it wasn't for the recommendation and the assistance to do this."

Meghan's story is just one example of the thousands of patients, caregivers, survivors and loved ones who are feeling the impact of your donations through Quality-of-Life Programs at Roswell Park. Your generosity makes their lives a little bit better, their days just that much brighter, their moments more filled with hope.





Finding hope in The 11 Day Power Play Cancer Resource Center

Going through cancer treatment can be one of the toughest times in a patient and their loved ones' lives. Thankfully, we have The 11 Day Power Play Cancer Resource Center at Roswell Park to ease some of the stressors faced.

This new center opened in September of 2022 for patients and families and offers a "soft place to land after a cancer diagnosis," said Martha Hickey, manager of The 11 Day Power Play Cancer Resource Center and Elevate Salon at Roswell Park.

The center will work in conjunction with the newly opened Elevate Salon to offer wigs and head coverings to cancer patients experiencing hair loss due to treatment. **In both spaces, visitors will feel the warmth and knowledge of our compassionate staff and volunteers. There, patients and their families can find information, support, comfort and connection.**

For breast cancer survivor Mandy Berzer — who helped celebrate the opening of the new center — the resource center team provided support and encouragement throughout her journey. "They were always there for me when I needed to vent, have a good laugh or a good cry," she said. "They were my dream team and offered practical solutions and comforting products during my treatment."

This resource is possible thanks to donations from The 11 Day Power Play organization and their dedicated support of the Roswell Park mission. Their annual event has raised millions of dollars over the years, the majority of those funds supporting research and patient programs at Roswell Park. The organization's name also graces The 11 Day Power Play Immunotherapy Labs which advance groundbreaking new research every day.

"Roswell Park is always evolving and I think that's so exciting," explained Amy Lesakowski, cancer survivor and co-founder of The 11 Day Power Play. She recognized all the players and community members who have contributed to their efforts, giving of their time and making donations because they, too, believe in the mission. "We know this beautiful new space will provide the necessary respite, hope and resources cancer patients and their families need. We are proud and honored to have it bear The 11 Day Power Play name."

Along with donations from The 11 Day Power Play organization key partners including the Buffalo Sabres, the West Herr Automotive Group, Michael and Michelle Gacioch, The Zeron Foundation and donations from the community also made this space possible.

Little Evie and her loved ones celebrated a win against cancer this year, and she rang the bell after finishing treatment!



Elevating the patient experience

Roswell Park celebrated the opening of its new Elevate Salon in spring of 2022. The spa-like space provides a haven for patients navigating hair loss and managing some skin-related symptoms and side effects from their cancer treatment.

In this tranquil setting, patients have the opportunity to take part in Roswell Park's complimentary wig and head covering program. They can book appointments with the salon's New York State-licensed stylists who can assist with hair transitions, helping our patients feel comfortable and confident throughout their cancer journey.

To date, this donor-funded oasis and its dedicated staff and volunteers have provided 2,200 wigs and head coverings and 1,200 individual stylist and consult appointments for patients experiencing hair loss due to treatment plus countless salon tours and drop-ins for information, guidance and solace.

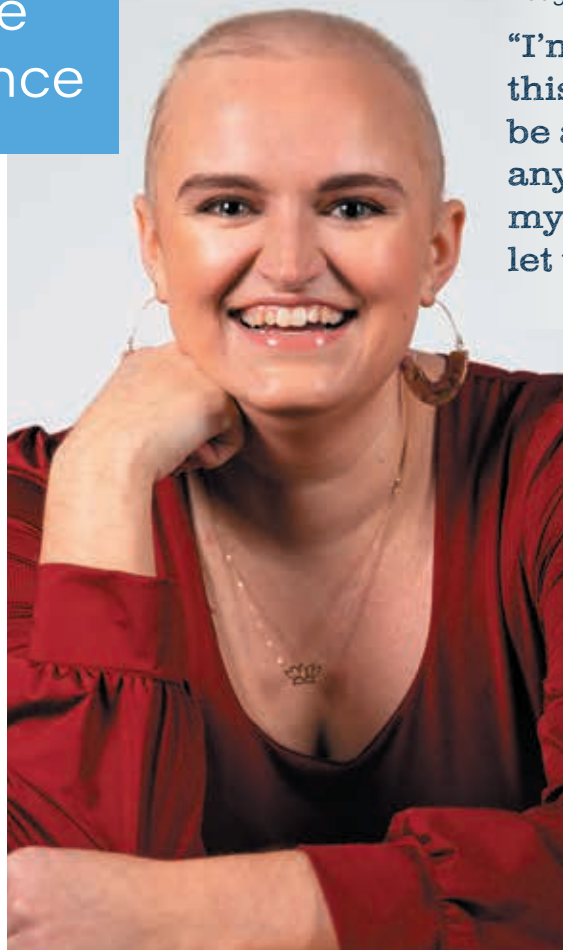
Elevate Salon is made possible in part by a generous gift from the Buffalo Sabres Alumni Association in support of all patients who will seek comfort and peace there. This creative, compassionate space has also been made possible through the generosity of Michael and Kirsten Lawley and the Lawley family, as well as Bunkie Hawk.

These are just a few of the approximately 1,500 patients who have found peace and hope in the Elevate Salon in its first year.



Laura Garrett, 28
Hodgkin's lymphoma

"I'm going to come out of this stronger. I'm going to be able to tackle this and anything else that comes my way. I'm not going to let this ruin my life."



Theresa Brandt, 69
Breast cancer

"I'm not letting cancer control me right now. This is just a hiccup in my life."



Grace Diaz, 62
Lung cancer

"You've got to live for today. Living in the now is so important, you have to enjoy every moment."



Aretha Graham, 50
Brain tumors

"I hope to be an inspiration for other women to see how far I have come and how far they can go, too."



Adam Kreutinger, 34
Brain cancer

"You never know how much time you do have, so if you can find something that really makes you happy, don't let anything stop you from doing it."



For every \$1 donated to the Roswell Park Alliance Foundation and invested into research initiatives, researchers go on to earn an additional \$23 in external grant funding.

Donor funding paves the way for **innovative research**

Roswell Park is pushing to eliminate cancer's grip on humanity every day. Those new treatments, findings and initiatives all have their start with new questions and ideas from Roswell Park scientists.

That's where Roswell Park's Scientific Advisory Committee (SAC) comes in. **Researchers and outreach experts submit their project proposals, all looking to continue to learn more about cancer and impact communities near and far. Through a competitive and rigorous process, the projects with the highest potential and most solid groundwork are selected for funding.**

These grants are made possible by the generosity of Roswell Park fundraisers and donors, without whom, these projects could not get off the ground and make their marks on cancer as we know it. For every \$1 donated to the Roswell Park Alliance Foundation and invested into research initiatives, researchers go on to earn an additional \$23 in external grant funding, further fueling their lifesaving work.

One arm of this initiative focuses on community outreach and engagement efforts that will ease the cancer burden in Western New York and beyond. These projects perfectly complement laboratory research by easing the cancer burden through education, prevention and screening efforts.

Fundraising Fuels Health Equity Initiatives

In the spring of 2023, funds were awarded to one such project: ***Honoring the 7th Generation Principle: Development of a Culturally Adapted Tobacco Treatment Specialist Training.***

Roswell Park donors are empowering Roswell Park experts to develop a training program to benefit Indigenous communities in Western New York, and ultimately tribes across the Northeast and beyond. This work is being led collaboratively by Rodney Haring, PhD, Director of the Center for Indigenous Cancer Research and Cancer Services, and Christine Sheffer, PhD, Director of the Roswell Park Tobacco Treatment Service.

Commercial tobacco use causes at least 15 different types of cancer and more than 30% of all cancer deaths, including 87% of all lung cancer deaths. Nationwide, Native Americans have the highest prevalence of cigarette smoking of any racial group. The disproportionate harms caused by this disparity in tobacco use are magnified by economic, social and environmental disadvantages that negatively impact people's efforts to eliminate commercial tobacco use.

High-quality, evidence-based treatment for tobacco use increases the chances of quitting long-term by sixfold. Tobacco Treatment Specialists are trained at Roswell Park and certified to provide the high-quality, intensive, evidence-based treatment people need to quit — and stay quit.

continued on page 18

Scientific Advisory Committee

Chairs:

Dr. Mukund Seshadri
Dr. Kirsten Moysich

Volunteer Chair:

Bill Loecher

Foundation Board

Representative:

Nancy Boulden

Standing study section members who review and select SAC grants:

Dr. Scott Abrams

Dr. Christine Ambrosone

Dr. Elizabeth Bouchard

Dr. Subhamoy Dasgupta

Dr. Irwin Gelman

Dr. David Goodrich

Dr. Pam Hershberger

Dr. Jens Hillengass

Dr. Joyce Ohm

Dr. Elizabeth Repasky

Dr. Nicholas Schlecht

Dr. Brahm Segal

Dr. Dean Tang

Drs. Haring and Sheffer will work with content experts from local Indigenous communities along with Indigenous team members at Roswell Park's Center for Indigenous Cancer Services to adapt the current approach and incorporate important Indigenous cultural health practices. The result will be a new workshop centered on the cultural values and preferences of members of the local Indigenous communities including Haudenosaunee Nations. The goal is to train Tobacco Treatment Specialists who live and work within Indigenous communities and who are equipped to provide treatment for commercial tobacco use that meets the needs of Indigenous populations, locally and regionally. Roswell Park has a Memorandum of Understanding with Indian Health Services (IHS) that includes collaborations at the federal level. This project responds by translating service initiatives back to local and regional IHS programs and units, Native urban centers and organizations. As an additional benefit, the project will offer scholarships to tribes and organizations to earn certification for the adapted training.

This initiative is just one step in a greater effort to bring health equity to local Indigenous communities and Native American peoples across the Northeast and beyond. This adapted training plan will have a sustained and powerful impact, making a small but significant contribution to reducing disparities caused by commercial tobacco and the resultant cancer inequities. Creating this program will support local Indigenous populations, including the member Nations of the Haudenosaunee, and create an important resource for future generations here in Western New York and far beyond.

“The Peacemaker taught us about the Seven Generations. He said, when you sit in council for the welfare of the people, you must not think of yourself or of your family, not even of your generation. He said, make your decisions on behalf of the seven generations coming, so that they may enjoy what you have today.”

Oren Lyons (Seneca)
Faithkeeper, Onondaga Nation



Dr. Atanassov



Dr. Barbi



Dr. Cannioto



Dr. Devonish



Dr. Dey



Dr. Fang



Dr. Feigin



Dr. Haring



Dr. Herr



Dr. Kim



Dr. Paragh



Dr. Quisenberry



Dr. Sheffer



Dr. Smiraglia



Dr. Smith

Other SAC awarded projects included:

PROSTATE CANCER

Leveraging metabolic stress in prostate cancer to impact the epigenome
Led by Dominic Smiraglia, PhD

Finding ways to eliminate changes in prostate cancer that develop resistance
Led by Dominic Smiraglia, PhD

Novel strategies to tackle prostate cancer therapy resistance and extend patient survival
Led by Dean Tang, PhD

Targeting prostate cancer vulnerabilities when it metastasizes to the bone
Led by Hai Wang, PhD

BREAST CANCER

A promising new solution to HER2 therapy resistant breast cancer
Led by Boyko Atanassov, PhD

Revealing the secrets of chemo-resistant triple negative breast cancer
Led by Jia Fang, PhD

Regulation of the immune-tumor interaction of triple-negative breast cancer (TNBC) in WNY catchment area
Led by Jianmin Zhang, PhD

LEUKEMIA

Using protein inhibitor combinations to improve targeted therapy in acute myeloid leukemia
Led by Pamela Sung, MD, PhD

Studying the combination of two therapies to reach more patients with acute myeloid leukemia
Led by Pamela Sung, MD, PhD

LUNG CANCER

Establishing the effects of obesity on the function and metabolic activity of regulatory T cells
Led by Joseph Barbi, PhD

Role of innate lymphoid cells in sexual disparity of lung cancer incidences
Led by Prasenjit Dey, PhD

Finding new ways to overcome resistance using gene overexpression screening
Led by Dae-Kyum Kim, PhD

OTHER CANCERS

Searching for new treatments for pancreatic cancer
Led by Michael Feigin, PhD

Studying the effects of ultraviolet light and immunosuppression on cutaneous squamous cell carcinoma
Led by Gyorgy Paragh, MD, PhD

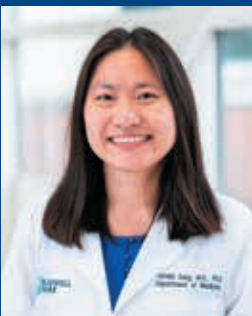
COMMUNITY OUTREACH AND ENGAGEMENT

PACTS (Promoting physical Activity during Cancer Treatment and Survivorship)
Led by Rikki Cannioto, PhD

OPEN (Our Promoting Enhanced Neighborhood) health for us, by us
Led by Julia Devonish, MD, PhD

Low-intensity mechanical stimulation to prevent hematopoietic cell transplant-related bone mineral density loss
Led by Megan Herr, PhD

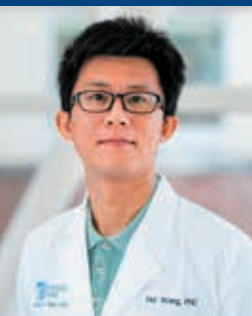
Development and initial validation of the experimental cannabis marketplace: a tool for evaluating cannabis consumer choice and demand
Led by Amanda Quisenberry, PhD, and Danielle Smith, PhD



Dr. Sung



Dr. Tang



Dr. Wang



Dr. Zhang



Giving every child a fighting chance

At Roswell Park, the Courage of Carly Fund is dedicated to bringing a little extra joy to our pediatric patients and their families. Children facing cancer and blood disorders deserve unforgettable moments, family support and the hope of promising scientific research.

Corporate partners, fundraising leaders and generous donors help to bring all of that to life. **From psychosocial support to family-friendly events, the Courage of Carly Fund provides support for every member of a pediatric patient's family.** This year, the program reached approximately 230 active oncology households and almost 100 active hematology households.

With our patients' health and safety always top of mind, our members were able to get back out and experience all the fun our community has to offer through group trips, holiday celebrations and wellness activities. Monthly outings and events — and sometimes more! — kept our families engaged and enjoying life together during a challenging time. When our youngest patients are facing rare and aggressive cancers and blood disorders, it can be daunting and sometimes difficult to reach hope on their own.

Pediatric Cancer Research

Only 4% of federal funding for cancer research is designated for childhood cancers. That means donor support and community fundraising are also crucial to bring new cancer-fighting research to fruition. Donations to the Courage of Carly Fund help close the gap in federal funding to allow researchers to take their ideas and turn them into reality so more lives can be saved. Donations to the Courage of Carly Fund provides seed funding to launch new research projects and provides for the exploration of new therapeutic options that could lead to new standards of care.

"There's research being done and there's funding for it. We're so appreciative that people give," said Amy Kaplewicz, mom to one-year-old cancer patient Jack. "They don't know us; they don't have to choose to donate. They don't know how much their generosity impacts us."

Giving Every Child A Fighting Chance



ROSWELL PARK
COMPREHENSIVE CANCER CENTER





Passion and enthusiasm are the heart of the Ride for Roswell, and the Ride community's efforts each year bring Roswell Park one step closer to ending cancer for good. The 2022 Ride was no different. In fact, it was pretty spectacular!

More than 7,700 riders and 1,000 volunteers came together to celebrate the return to a full Ride for the first time since 2019. Their commitment to Roswell Park shone through with a record \$5.7 million raised for cancer research and patient care programs.

Everyone who was part of this year's Ride, presented by the West Herr Automotive Group, felt the joy, gratitude and hope that filled the air at the University of Buffalo. That inspiration started on Friday night at Celebration of Hope with the peloton, procession, parade of teams and the lighting of the torch.



2022 Torch Lighter: Cheryl Reinhardt

Cheryl shared her inspirational story with the Ride Community as the 2022 Torch Lighter. Her optimism, energy and empathy motivated each of us to live every day to its fullest.

The Ride Community sadly lost Cheryl after a 19-year battle with stage 4 ovarian cancer. Cheryl was the true embodiment of hope and will be in our hearts forever.





“Everyone needs to do something bigger than life at least once in their lifetime.”

— ESR Rider



EMPIRE STATE RIDE TO END CANCER

The adventure of a lifetime hits the road for the 8th year

From July 24 to 30, more than 200 cyclists road 500+ miles from Staten Island to Niagara Falls, all with one mission: to end cancer. This group of road warriors joined together from all over the country, representing more than 20 states, and raised a collective \$1.5 million for cancer research at Roswell Park.





ESR Long Island pedals through Oyster Bay



For the second year, hundreds of cyclists pedaled through the Town of Oyster Bay to raise funds for clinical research and trials happening on Long Island through Roswell Park's partnership with Catholic Health Long Island through the Roswell Park Care Network. **The 2022 event raised \$100,000 to give more hope to patients facing a cancer diagnosis in their community.**



Funds raised through Bald for Bucks support groundbreaking research and patient care programs at Roswell Park to help patients throughout their cancer journey. There are so many exciting advancements happening. From September through June, Bald for Bucks raised more than \$260,000 to enhance and expand that work.

This academic year, participants included:

20
Schools
4
Beards for Bucks Teams
27
Individuals
6
Community Teams



Mike and his father-in-law, Frank, had the opportunity to ring the bell together, marking a very special day for the whole family.



icecycle

TO END CANCER

1000+ bring the heat and impact to Buffalo's winter

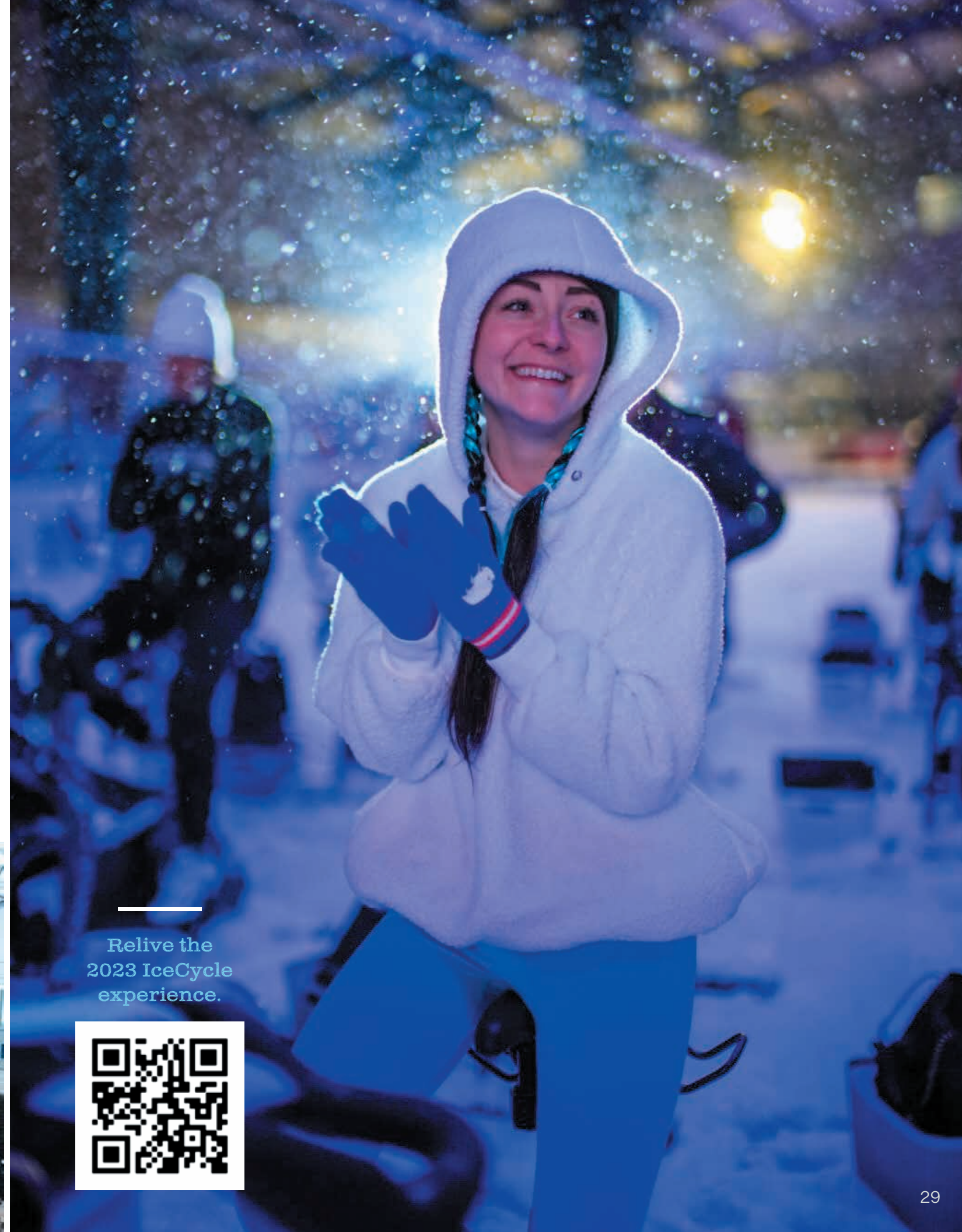
On March 10 and 11, 2023, more than 1,100 riders turned up the heat at Buffalo's coldest cycling event and made a difference in the fight to end cancer.

Together, with presenting sponsor the West Herr Automotive Group, participants braved inches of snow and freezing temperatures to raise over \$530,000 for innovative research and clinical trials at Roswell Park.

Each of the 10 sessions was introduced to a patient or survivor whose life was changed thanks to funds raised at events like IceCycle. Here's what Jill, a breast cancer survivor, had to say:

"If I had all of Roswell Park's donors in front of me, I would just say thank you a million times over. This has helped my whole family. This is the most stressful, emotional time in your life and eliminating even one little ounce of stress for someone is just immeasurable."

Relive the 2023 IceCycle experience.



Team ROSWELL

CHAMPIONS FOR CANCER CURES

Team Roswell is a community of people who are ready to make an impact on cancer. This year, more than 125 Team Roswell events were held to raise critically needed funds to show cancer patients they aren't in the fight alone.

Here are just a few of those 125+ events:



WANAKAH COUNTRY CLUB 100 HOLES OF GOLF

\$157,006

In their 2022 event, 16 golfers played 100 holes each in one day to raise funds for the Courage of Carly Fund and Live Like Luca. Each player covers about 35 miles on foot during this event, all for a great cause.



FRIENDS OF CARLY WHITE PARTY

\$70,000

The White Party is a celebration that takes place every summer where guests dress in all white! Proceeds from the party benefit Roswell Park's Courage of Carly Fund, which fuels pediatric cancer research and provides quality-of-life programs to help brave kids fighting cancer and blood disorders.

A TASTE FOR LIFE

\$65,752

A Taste For Life, co-chaired by Susan Roney and Leanne Stepien, was back to sample fabulous wines, craft beers and sweet and savory treats at the Saturn Club. More than 350 guests raised funds to advance lung cancer treatments and therapies at Roswell Park.

DAYTONA FREE RIDE

\$35,850

Nick Foederer, with the help of Brian Sizemore hosted a jet ski event in Daytona Beach, Florida. All proceeds from this incredible event benefitted Roswell Park Alliance Foundation. Riders from all over took to the water on their jet skis to perform their best, most extreme tricks — including backflips — as they competed against one another and raised funds for an amazing cause.



VULLO BOYS WALK FOR A CURE

\$32,000

10-year-old Charlie and 7-year-old Preston hosted a walk-a-thon, bake sale and basket raffle to raise funds for the Courage of Carly Fund. They are a shining example that no matter your age, you can become involved and truly make a difference in the cancer community.

SHOOTING FOR A CURE

\$28,623

Shooting For A Cure! started in 2011 as a way to honor a basketball coach's wife battling cancer. Since then, the Pembroke girls' basketball team, led by Coach Wilson, has raised more than \$255,623 for Roswell Park.

TRAPHAGEN'S TRAIL RIDE

\$22,680

Shannon Traphagen started Traphagen's Trail Ride 4 Brain Cancer in the Village of Hamburg to honor her late husband Mike's legacy and has raised \$38,000 to date for brain cancer research and treatment at Roswell Park.

SADDLE UP FOR ROSWELL

\$21,023

This annual event raises funds for breast and gynecologic cancer research. Saddle Up for Roswell is run by riders and volunteers at Chestnut Ridge Equestrian Center and features horse trials and a dressage show.

STARPOINT LOCKED IN TO LOCK OUT CANCER

\$20,000

Each year, Starpoint High School students sign up to sleep in the school gym to raise money for Roswell Park.

WANAKAH PINK LADIES TOURNAMENT

\$19,600

Led by new event chairs each year, the women of Wanakah raised funds for Roswell Park with an afternoon of golf and raffles.

In addition to these incredible community events, the following events raised over \$10,000 in the 2022-23 fiscal year to support Roswell Park through Team Roswell:

Lindsay's Legacy	\$15,500
Karen Kovach Basket Raffle	\$12,200
Holiday Hockey Showcase	\$11,620
4QuarterFight	\$11,200
F Melanoma Golf Tournament	\$10,865
Strength, Tone, & Stretch	\$10,020
Dival Safety Charity Event	\$10,000



After breaking a world record in 2021, The 11 Day Power Play was back to its community shift format for their 6th annual event. More than 2,000 players of all ages and skill levels, took the ice at HarborCenter between June 23 and July 3 playing three-hour long games. The players and WNY community who supported them committed to fight cancer one shift at a time and ended the 2022 event by raising over \$1.2 million for cancer research and patient programs.



Specialized genetic testing gave Jenna her best chance against hereditary breast cancer she faced as a young woman.





Leaving a lasting legacy at Roswell Park

Mitch Flynn has been a volunteer with Roswell Park since he was invited to become a founding member of the Roswell Park Alliance Community Board in 1991. As principal of Flynn & Friends, he immediately offered his creative skills to help design the first annual report for the Roswell Park Alliance Foundation.

Just a few years later, he pitched the idea of a fundraising cycling event, and the Ride for Roswell was born. In the 28 years since, Mitch has been among the top fundraisers, always saying his ultimate goal is to raise a cumulative \$1 million. He's well on his way, with over \$700,000 raised to date! He continues fundraising because of the progress he sees being made for patients.

Recently, Mitch reflected on the start of his relationship with Roswell Park over 30 years ago.

"When Anne and Donna Gioia asked me to become involved at Roswell Park, it was a bright spot as my father-in-law had just died after a long battle with cancer," he said. "That's also why Ellen and I decided to make a legacy gift through our estate plans to Roswell Park."

You'll find Mitch with his wife Ellen Goldstein by his side, camera in hand, capturing highlights of the Ride's year-round fundraising events and opportunities. Mitch's passion and leadership for the Ride for Roswell continue to inspire us. Thank you, Mitch and Ellen! We are so fortunate to count you as valued members of the Roswell Park family and the Dr. Roswell Park Society.



After years of dedication to Roswell Park's fundraising events, Caitlin experienced brand new meaning for her support when she became a patient herself.

With gratitude to the following thoughtful individuals who Remembered Roswell in their estate plans this fiscal year:

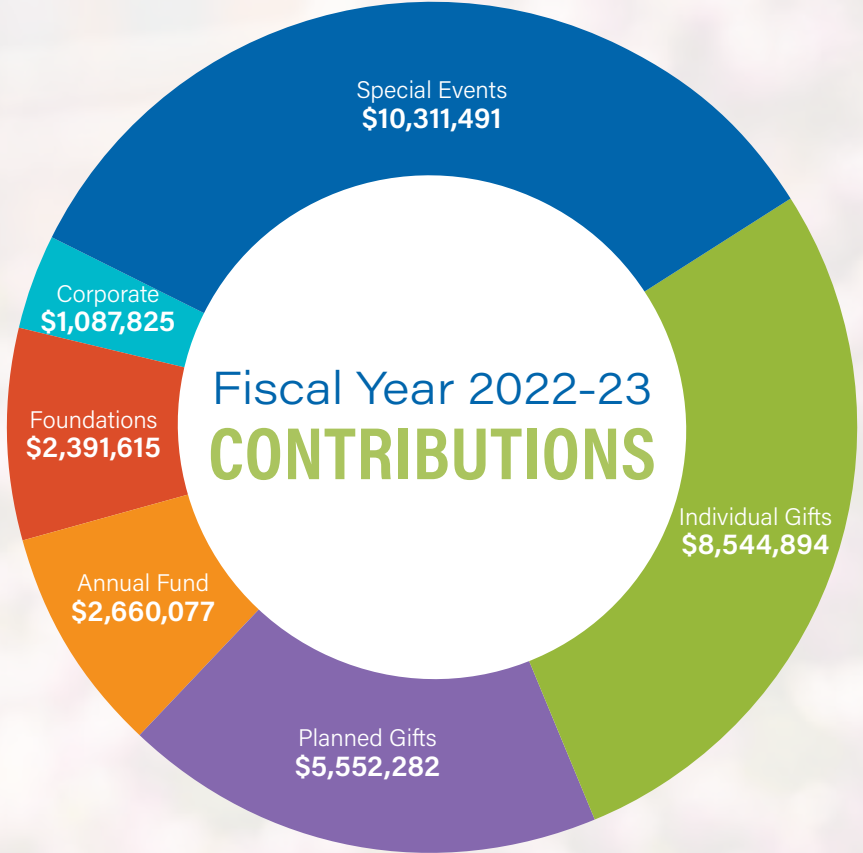
Mary Y. Allen	Paul E. Gatz	John E. Keenan	Dora B. Reed
Barbara J. Breeser	Jean Hackenheimer	Walter Lane	Rose M. Ridall
Joseph Camerata	Laverne Hadley	Wilfred and Joan Larson	Mary Ann Rogers
Michael J. Cammaroto	Rose L. Hayes	Marsha A. Little	Donald R. Rychnowski
Nancy A. Cunningham	Donald H. Hillyard	Robert L. Montgomery	Laura C. Stephan
Carlton G. Cushman	Earl C. Hull	Albertine K. Moran	Ivan Tarnopoll
Norma C. DelBello	Arthur A. Jaworski	Eleanor L. Ponto	Chester B. Woloszyn
Teresa J. DiVizio	Janet E. Jones	Francis A. Puckhaber	Kimberly Young O'Mara
Marion Kidd S. Fay	Richard C. Kast	Leonard M. Radka	Sally Zilbauer

Facing cancer as a kid is incredibly tough, but Sophia has found so much hope and comfort around other pediatric patients through the Courage of Carly Fund.

New Endowments

- Thank you to the individuals and organizations who established endowments last fiscal year to sustain our groundbreaking work for generations to come.
- The Katie Dougherty Endowed Chair in Pediatric Oncology
 - The Tom and Pamela Reilly Endowed Fund to Support the Survivorship Program
 - The Eleanor LaVey Ponto Endowed Fund for Cancer Research
 - The Eleanor LaVey Ponto Endowed Fund for the Intensive Care Unit
 - The Ryan Miller Legacy Endowed Fund
 - The Marilyn C. Shuman Endowment for Blood Cancers Research Fund
 - Andy's Lighthouse Endowed Fund to Support Young Adults with Cancer

Financial Information



- Special Events
- Individual Gifts
- Planned Gifts
- Annual Fund
- Foundations
- Corporate



The Roswell Park Alliance Foundation is proud to receive an unmodified audit opinion on our 2022-23 fiscal year audited financial statements. A full financial statement is available by scanning the QR code or contacting Senior Director of Finance & Operations Tammy Lightcap at 716-845-8033 or tammy.lightcap@roswellpark.org.



Roswell Park Alliance Foundation Board of Directors

Gwen Arcara
Scott Bieler
Nancy Boulden
Terry Bourgeois
Larry Castellani, Jr.
Ross Eckert
Chair Elect

Eric Feldstein
Steve Finch
Michael Gacioch
William T. Gacioch
Melissa Garman Baumgart
Treasurer
Anne D. Gioia
Secretary

Donna M. Gioia
Katie Hamister
William Inman
Pamela R. Jacobs Vogt
Michael Lawley
Patrick P. Lee
Judith Lipsey

Daniel Misko
James D. Newman
Chair
David Pietrowski
Luis Rodriguez, Jr.
Christine Standish
Lee C. Wortham
Chair Emeritus

President's Advisory Cabinet

Ann Celani
Russell D'Alba
Scott Friedman, Esq.
Dan Gernatt

Philip Hubbell
Gerald Lippes
Patrick Marrano
Trudy Mollenberg

Nancy Naples O'Neill
Thomas H. O'Neill, Jr.
Bruce Popko

Jerry Saxe
Buford Sears
Robert Weber

Alliance Community Board

Julie Alford
Don Benson
RoseAnn Berardi
Molly Beecher Bohen
Terry Bourgeois
Chair
Chris Burns
Carole Ann Collard
Charles Collard
Tyrone Crawford
Tom Cunningham
Brian Duffett
Chris Eberle
Mitch Flynn
Lynn Gates

Erin Geiger
Caroline Gilfillan
Anne D. Gioia
Chair Emeritus
Donna M. Gioia
Chair Emeritus
Jacqueline Glor
Kathleen Grait
John Hannon
Barbara Heller
Julia Hilliker
Fran Hornung
Jordan Joseph-Fogel
Linda Kahn
Kirsten Lawley

Cyndi Leonard
Amy Lesakowski
Mike Lesakowski
Ruth Lipsitz
Bill Loecher
Chris Lorenz
Mark Manders
Dana Marciniak
Sean McCrone
Shane Moore
Jonathan Olsen
Kathleen O'Neil
Allison Joseph Pendleton
Scott Philbin

Kelly Rehak
Susan Roney
Sally Russell
Rich Sanders
Suzy Sears
Emily Smaldino
Leanne Stepien
Joanne Tebeau
Shannon Tedesco
Anne Virag
Mary Kate Vivacqua
Blake Walsh
Annie O'Neil White

Staff Leadership

Cindy Eller
Executive Director
Tammy Lightcap
Senior Director of Finance & Operations
Judith Epstein
Director of Grants & Foundation
Andrea Gregory
Director of Special Events Fundraising

Kim Guido
Director of Individual and Planned Gifts
& Donor Stewardship
Jennifer Hickok
Director of Corporate and Sports Partnerships
& Board Relations
Michelle Ostrander
Director of Development Marketing & Communications
Kim Sweeney
Executive Director of Patient Concierge Services

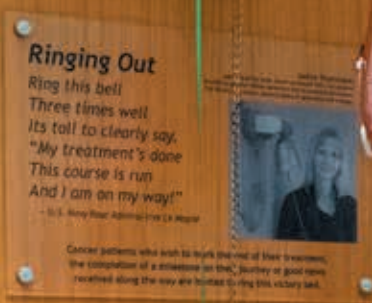
John's battle with glioblastoma, an aggressive form of brain cancer, is made more hopeful thanks to donor funded therapeutic vaccine, SurVaxM, which is currently in clinical trial.



Learn more about the promise of SurVaxM by scanning the QR code.



Kristin and her family were blindsided by her breast cancer diagnosis, but she fought every day to get back to her boys' hockey games.



Elm & Carlton Streets | Buffalo, New York 14263 | 716-845-4444 | RoswellPark.org/Giving

The Roswell Park Alliance Foundation has received the ranking of 4 out of 4 stars from Charity Navigator, America's largest independent charity evaluator. This is the seventh consecutive year that the Alliance Foundation has earned Charity Navigator's highest possible rating.

