



Henry Margu



2021



Henry Margu

Trend-setting styles, cutting-edge colorations, incomparable quality and relentless dedication to our customers have secured Henry Margu's position as a leader of the "alternative" hair industry.

Since Henry Margu first came on the scene in Philadelphia in 1951, family ownership has developed the company into one of the most well respected international brands of wigs and hair fashions. From a humble beginning in the store front millinery shop of the family house, the perseverance and dedication of the Margu family has made us the oldest and most experienced wig manufacturer in the US.

Over these many years, innovative ideas have helped us create some of the most intriguing styles and unique colors in the industry as well as crafting our reputation as a trendsetter. The design staff at Henry Margu has not only focused on developing exquisite fashions but also on achieving the highest quality standards for our products. While Henry Margu continues to grow, our core values and strong family culture have not changed.

Our enduring partnerships with thousands of retailers is the result of our excellent customer service and knowledgeable sales staff which has enabled us to serve countless women over the years. With 70 years of history, many milestones have been recognized at Henry Margu with many more still to come. Most importantly, the driving force of our efforts is for one purpose ... the satisfaction of our customers!

Front cover: Athena in 60/101GR



Henry Margu circa 1951 around the time he was making preparations to launch the business.

William Margu standing in front of his West Philly millinery shop in 1950. The beginnings of the company he would soon form with his son Henry.



In today's world, when a woman's hair looks good, she feels good. Henry Margu is helping women exude beauty and confidence with a countless variety of fashion forward and elegant styles available in a wide range of our exclusive salon inspired colors.

The superior craftsmanship of Henry Margu wigs utilizes sophisticated techniques including specialized fiber processing and blending methods making our styles more manageable and natural looking. Our design team is constantly working to continually create lighter weight wigs with exceptional comfort for endless hours of wearing pleasure.

The beautiful colorations developed by Henry Margu add a touch of realism to any style. Using the most up-to-date coloring trends, the highlighting is designed to accentuate each individual style creating the most natural appearance for every wig.

Henry Margu is creating freedom of choice by enabling every woman to easily achieve any hairstyle and to change her appearance at a moment's notice to look her absolute best. Browse the following pages and see for yourself why the difference is beautiful with Henry Margu wigs.

Henry Margu ... The Difference is Beautiful!™

Style shown: Jules in 8/27/33H



Top Styles

Welcome to the world of glamorous hair with the introduction of Henry Margu's new Top Style Hair Enhancements. Well-designed Top Styles are an amazing alternative to a full wig. Offering a simpler solution to hair loss, fine or thinning hair, Top Styles instantly add volume, thickness and body by easily and realistically blending into a woman's natural hair.

The Henry Margu design team attentively listened to our retail partners in the development of our Top Styles with the goal of creating a better top piece. With focus on the detail regarding every aspect including base size, fiber density, highlighting techniques and comb placement, this collaboration has resulted in styles that offer women the hair of their dreams as well as allowing them to exude confidence and self-esteem.

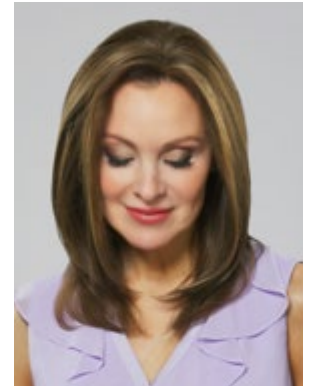
The styles on the following three pages are produced in synthetic fiber for easy care and maintenance and ready-to-wear styling.



Style shown: Ultra in 12AH



Ultra



Weight: 3.05 ounces
Top: 12½"
Sides: 11½ - 12½"
Back: 11½ - 12½"
Overall: 11½ - 12½"

Ref#: 7001
Color shown: 7H
Colors: 1BH, 4H, 5H, 6H, 7H, 8H, 8/14H, 8/27/33H, 12AH, 12H, 14H, 16H, 24H18, 26GR, 26H, 27AH, 31H, 33H, 88GR, 88H, 614GR

Hair enhancing top piece with 6½ x 7" mono & wefted base
 Mono area is 5¼ x 4¼



Secret



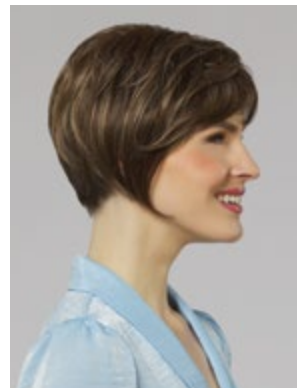
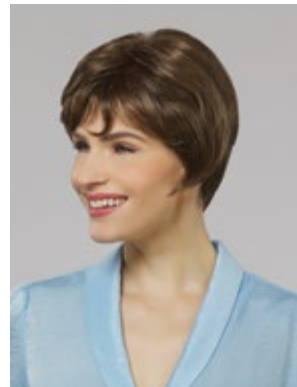
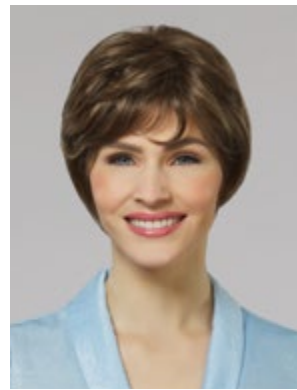
Weight: 1.35 ounces
Top: 9 - 11"
Sides: 12 - 13"
Back: 13 - 14"
Overall: 9 - 14"

Ref#: 7002
Color shown: 12AH
Colors: 1BH, 4H, 5H, 6H, 7H, 8H, 8/14H, 8/27/33H, 12AH, 12H, 14H, 16H, 24H18, 26GR, 26H, 27AH, 31H, 33H, 88GR, 88H, 614GR

Hair enhancing top piece with 5 x 2¾" mono base



Delight



Weight: 1.05 ounces
Top: 3½ - 4½"
Sides: 5 - 6"
Back: 5 - 6"
Overall: 3½ - 5½"

Ref#: 7004
Color shown: 7H
Colors: 1BH, 4H, 5H, 6H, 7H, 8H, 8/14H, 8/27/33H, 10/613GR, 12AH, 12H, 14H, 16H, 24H18, 25GR, 25H, 26GR, 26H, 27AH, 31H, 33H, 38, 44, 51, 56, 60, 88GR, 88H, 614GR

Hair enhancing top piece with 6¼ x 6¾" mono & hand knotted base
 Mono area is 5¼ x 4¾

Premiere

Human hair top styles

Top Style Hair Enhancements give new meaning to luxurious hair! Designed with the same goal as our synthetic Top Styles, Premiere top pieces are produced with healthy and soft Remy hair from our exclusive resource.

There is no substitute for the look, feel and movement of high-quality human hair. Our Remy hair can accentuate any hair style by seamlessly blending with a woman's natural hair and curled to integrate perfectly for an amazingly realistic appearance. All Premiere top styles are produced with a monofilament base for natural styling with a center or side part and a polyurethane circumference if tape is necessary.

Created as a professional line, Premiere Top Styles are sold in shops and boutiques only and are not available online.

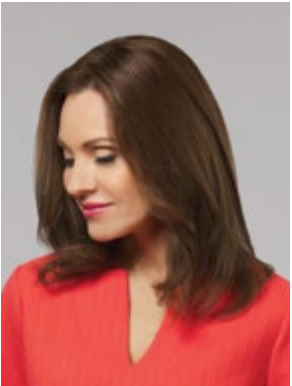
Premiere human hair colors

Premiere color swatches are used as a reference only.
An exact match cannot be guaranteed due to the process of hand dying human hair.

				
Espresso	Truffle	Chestnut	Chocolate	Cappuccino
				
Cinnamon	Sangria	Russet	Gingerbread	Toffee
				
Chardonnay	Platinum R	Champagne R		



REMY



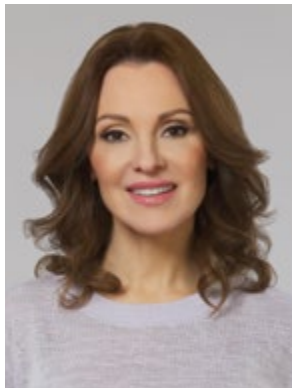
Weight: 2.80 ounces
Top: 14"
Sides: 14"
Back: 14"
Overall: 16"

Ref#: 7053
Color shown: Chocolate
Colors: Espresso, Truffle, Chestnut, Cappuccino, Chocolate, Cinnamon, Chardonnay, Toffee, Gingerbread, Sangria, Russet, Champagne R, Platinum R

100% Remy human hair
Hair enhancing top piece with 5¾ x 5½" mono base



LUX



Weight: 1.05 ounces
Top: 12"
Sides: 12"
Back: 12"
Overall: 14"

Ref#: 7050

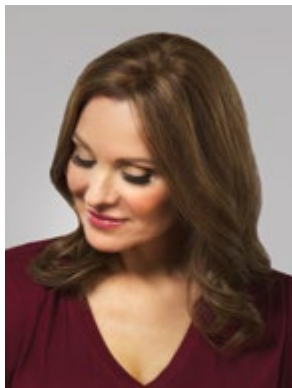
Color shown: Cappuccino

Colors: Espresso, Truffle, Chestnut, Cappuccino, Chocolate, Cinnamon, Chardonnay, Toffee, Gingerbread, Sangria, Russet, Champagne R, Platinum R

100% Remy human hair
 Hair enhancing top piece with 5 x 2¾" mono base



Splendor



Weight: 1.60 ounces
Top: 18"
Sides: 18"
Back: 18"
Overall: 20"

Ref#: 7052

Color shown: Cappuccino

Colors: Espresso, Truffle, Chestnut, Cappuccino, Chocolate, Cinnamon, Chardonnay, Toffee, Gingerbread, Sangria, Russet, Champagne R, Platinum R

100% Remy human hair
 Hair enhancing top piece with 5 x 2¾" mono base

Premiere

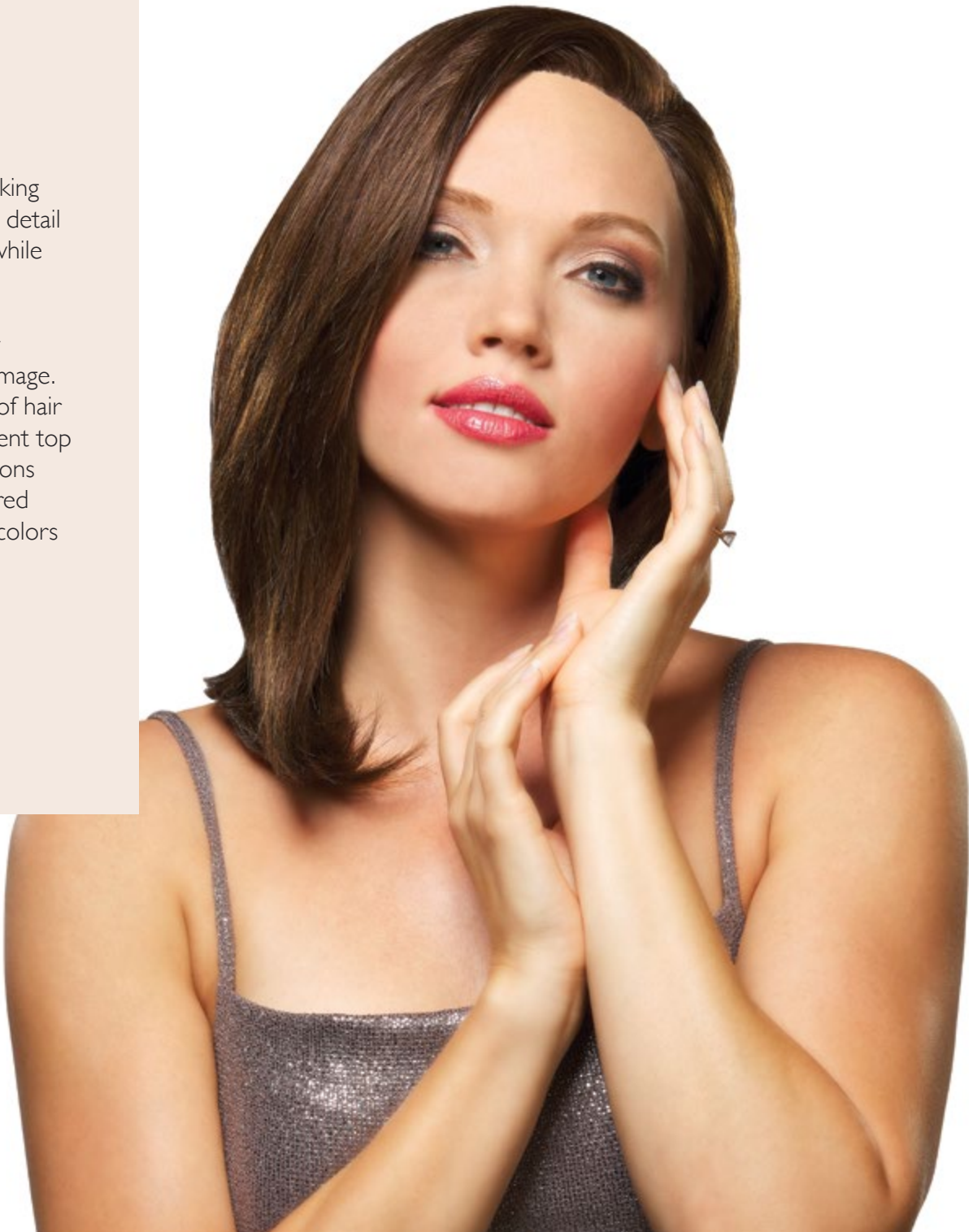
Human hair wigs

Premiere is designed for women to radiate beauty while looking and feeling their best! Intricately hand crafted to the smallest detail using 100% Remy hair, the styles offer exceptional comfort while looking amazingly realistic.

Premiere utilizes 100% Remy hair which has the cuticle layer preserved to protect the hair strand from environmental damage. Premiere Remy hair is healthy, smooth and soft. The strands of hair are meticulously knotted into the cap by hand. A monofilament top and lace front simulate realistic hair growth. Medical applications in the cap allow for a secure and comfortable fit. Salon inspired highlighting techniques are used to create the most realistic colors for every Premiere wig.

Created as a professional line, Premiere is sold in shops and boutiques only and is not available online.

Premiere is the ultimate in luxurious hair!



Style shown: Diamond in Chocolate



Diamond



Weight: 5.60 ounces
Bang: 9"
Eartab: 10"
Nape: 9"
Top: 11"
Sides: 10 - 12"
Back: 9 - 12"
Overall: 16"

Ref#: 5001
Color shown: Espresso
Colors: Espresso, Truffle, Chestnut, Cappuccino, Chocolate, Cinnamon, Chardonnay, Toffee, Gingerbread, Sangria, Russet Champagne R, Platinum R

100% Remy human hair
100% hand knotted stretch cap with monofilament top & lace front
Medical application on front hairline, eartabs & nape



Sappho



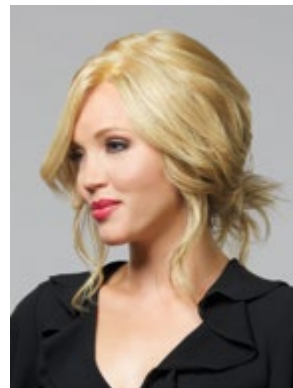
Weight: 6.35 ounces
Bang: 15"
Eartab: 14"
Nape: 13"
Top: 16"
Sides: 14 - 16"
Back: 13 - 16"
Overall: 22"

Ref#: 5005
Color shown: Cappuccino
Colors: Espresso, Truffle, Chestnut, Cappuccino, Chocolate, Cinnamon, Chardonnay, Toffee, Gingerbread, Sangria, Russet Champagne R, Platinum R

100% Remy human hair
 100% hand knotted stretch cap with monofilament top & lace front
 Medical application on front hairline, eartabs & nape



Enero



Weight: 5.70 ounces
Bang: 8½"
Eartab: 11"
Nape: 8½"
Top: 9½"
Sides: 10"
Back: 8 - 10"
Overall: 13"

Ref#: 5003
Color shown: Chardonnay
Colors: Espresso, Truffle, Chestnut, Cappuccino, Chocolate, Cinnamon, Chardonnay, Toffee, Gingerbread, Sangria, Russet Champagne R, Platinum R

100% Remy human hair
 100% hand knotted stretch cap with monofilament top & lace front
 Medical application on front hairline, eartabs & nape

Naturally Yours

Experience the best Henry Margu has to offer! It's a new era for today's sophisticated fashion forward women looking for quality, comfort and style. With advancements in production techniques that have allowed for countless improvements in every detail, Henry Margu has created a unique collection of wigs for every lifestyle.

Introducing **Naturally Yours®** ... innovative and artistically hand crafted styles offering exceptional comfort while looking amazingly realistic. Modern in design, the Naturally Yours collection offers ready-to-wear styles with a monofilament top that have the versatility to be customized to fit a woman's personal needs. From chic bobs to long, luscious layers, the monofilament top is hand-knotted with individual fibers to simulate realistic hair growth and allows for multi-directional styling.

Browse the following pages to see the variety of luxurious Naturally Yours styles that will help every woman radiate beauty and look and feel her best!

For the most natural appearance and the ultimate in comfort ... it's **Naturally Yours®**.

Style shown: Kendall in 88GR



Athena



Weight: 3.75 ounces
Bang: 6"
Eartab: 9"
Nape: 9"
Top: 6 - 12½"
Sides: 7 - 13"
Back: 9 - 13"
Overall: 15"

Ref#: 4754
Color shown: 60/101GR
Colors: 1BH, 4GR, 4H, 5H, 6H, 7H, 8H, 8/14H, 8/27/26GR, 8/27/33H, 10/613GR, 12AH, 12H, 14H, 16H, 24H18, 25GR, 25H, 26GR, 26H, 27AH, 31H, 33H, 38, 38/56GR, 44, 51, 56, 60, 60/101GR, 88GR, 88H, 130H, 131GR, 614GR, 614H, 626H

Monofilament top with lace front



Michnele



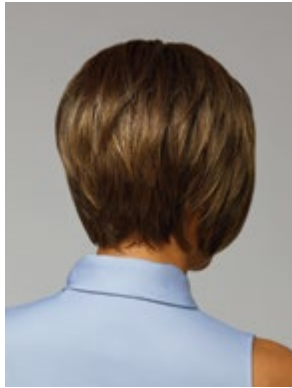
Weight: 2.05 ounces
Bang: 4"
Eartab: 5½"
Nape: 3"
Top: 3 - 5½"
Sides: 3 - 4½"
Back: 3 - 4½"

Ref#: 4778
Color shown: 10/613GR
Colors: 1BH, 4GR, 4H, 5H, 6H, 7H, 8H, 8/14H, 8/27/26GR, 8/27/33H, 10/613GR, 12AH, 12H, 14H, 16H, 24H18, 25GR, 25H, 26GR, 26H, 27AH, 31H, 33H, 37, 38/56GR, 43, 51H, 56, 60/101GR, 60H, 88GR, 88H, 130H, 614GR

Monofilament top with lace front



Maodilyn



Weight: 2.40 ounces
Bang: 7¾"
Eartab: 5½"
Nape: 2"
Top: 5 - 9"
Sides: 3 - 5½"
Back: 2 - 5½"
Overall: 9"

Ref#: 4774
Color shown: 7H
Colors: 1BH, 4H, 5H, 6H, 7H, 8H, 8/14H, 8/27/33H, 12H, 14H, 24H18, 26GR, 26H, 37, 38, 60, 88GR, 614GR

Petite Average headsize
 Monofilament top with lace front



Kendall

Weight: 3.55 ounces
Bang: 7"
Eartab: 10"
Nape: 8"
Top: 7 - 11"
Sides: 8 - 10"
Back: 8 - 10"
Overall: 14½"

Ref#: 4758
Color shown: 14H
Colors: 1BH, 4GR, 4H, 5H, 6H, 7H, 8H, 8/14H, 8/27/26GR, 8/27/33H, 10/613GR, 12AH, 12H, 14H, 16H, 24H18, 25GR, 25H, 26GR, 26H, 27AH, 31H, 33H, 88GR, 88H, 130H, 131GR, 614GR, 614H, 626H

Monofilament top with lace front



Iris

Weight: 2.10 ounces
Bang: 3½"
Eartab: 3"
Nape: 2"
Top: 2½ - 4½"
Sides: 2½ - 4"
Back: 2½ - 4"

Ref#: 4780
Color shown: 60/101GR
Colors: 1BH, 4H, 5H, 6H, 7H, 8H, 8/14H, 8/27/33H, 10/613GR, 12AH, 12H, 14H, 16H, 24H18, 25GR, 25H, 26GR, 26H, 27AH, 31H, 33H, 37, 38, 38/56GR, 43, 44, 51, 56, 60, 60/101GR, 88H, 130H

Monofilament top with lace front





Hannah

Weight: 3.95 ounces
Bang: 5½"
Eartab: 9"
Nape: 7"
Top: 4 - 11"
Sides: 3½ - 9"
Back: 3½ - 9"
Overall: 12½"

Ref#: 4782
Color shown: 25GR
Colors: 1BH, 4GR, 4H, 5H, 6H, 7H, 8H, 8/14H, 8/27/26GR, 10/613GR, 12H, 14H, 16H, 24H18, 25GR, 25H, 26GR, 26H, 31H, 38/56GR, 60/101GR, 88GR, 130H, 131GR, 614GR, 626H

Monofilament top with lace front



Fiona

Weight: 3.30 ounces
Bang: 7"
Eartab: 8½"
Nape: 6"
Top: 5¼ - 9"
Sides: 7½ - 8½"
Back: 6 - 8½"
Overall: 13"

Ref#: 4749
Color shown: 88GR
Colors: 1BH, 4GR, 4H, 5H, 6H, 7H, 8H, 8/14H, 8/27/26GR, 8/27/33H, 10/613GR, 12AH, 12H, 14H, 16H, 24H18, 25GR, 25H, 26GR, 26H, 27AH, 31H, 33H, 88GR, 88H, 131GR, 614GR, 614H, 626H

Monofilament top with lace front





Charlotte

Stella

Becky



Charlotte

Weight: 1.95 ounces
 Bang: 3½"
 Eartab: 3"
 Nape: 3"
 Top: 2½ - 4"
 Sides: 2¼ - 3"
 Back: 2¼ - 3"
 Ref#: 4750
 Color shown: 4H
 Colors: 1BH, 4H, 5H, 6H, 7H, 8H, 8/14H, 8/27/33H, 12H, 14H, 16H, 24H18, 25H, 26H, 33H, 37, 38, 38/56GR, 43, 44, 51, 56, 60, 60/101GR, 88H
 Monofilament top with lace front

Stella

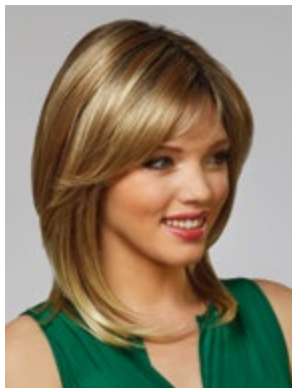
Weight: 2.05 ounces
 Bang: 4"
 Eartab: 3½"
 Nape: 2¾"
 Top: 4"
 Sides: 2½ - 3½"
 Back: 2½ - 3½"
 Ref#: 4800
 Color shown: 31H
 Colors: 4H, 6H, 7H, 8H, 8/14H, 8/27/33H, 12AH, 12H, 14H, 16H, 24H18, 26GR, 26H, 37, 38, 43, 44, 51, 56, 60, 88GR, 88H
 Monofilament top

Becky

Weight: 1.80 ounces
 Bang: 4"
 Eartab: 2¾"
 Nape: 1¾"
 Top: 2 - 3½"
 Sides: 1¾ - 2¾"
 Back: 1¾ - 3¼"
 Ref#: 4739
 Color shown: 88H
 Colors: 1BH, 4H, 5H, 6H, 7H, 8H, 8/14H, 8/27/33H, 12AH, 12H, 14H, 16H, 24H18, 25H, 26H, 27AH, 31H, 33H, 37, 38/56GR, 38H, 43, 44H, 51H, 56, 60/101GR, 60H, 88H, 614H
 Monofilament top



Taylor



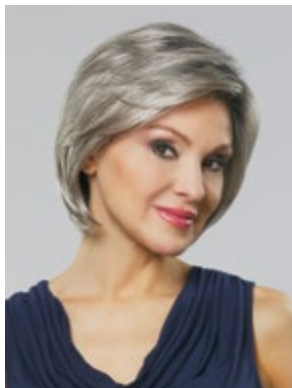
Weight: 3.95 ounces
Bang: 6"
Eartab: 10"
Nape: 10"
Top: 4½ - 10"
Sides: 6 - 8¾"
Back: 8¾ - 10¾"
Overall: 15½"

Ref#: 4772
Color shown: 88GR
Colors: 1BH, 4H, 5H, 6H, 7H, 8H, 8/14H, 8/27/33H, 12H, 14H, 16H, 24H 18, 26GR, 26H, 27AH, 88GR, 614GR, 626H

Monofilament top



Farrah



Weight: 2.35 ounces
Bang: 5½"
Eartab: 6½"
Nape: 2½"
Top: 3½ - 6½"
Sides: 4½ - 6½"
Back: 2½ - 6½"
Overall: 9"

Ref#: 4756
Color shown: 38/56GR
Colors: 1BH, 4GR, 4H, 5H, 6H, 7H, 8H, 8/14H, 8/27/33H, 10/613GR, 12AH, 12H, 14H, 16H, 24H 18, 25GR, 25H, 26GR, 26H, 27AH, 31H, 37, 38, 38/56GR, 43, 44, 51, 56, 60, 60/101GR, 88GR, 88H, 614GR

Monofilament top with lace front



Natalie



Weight: 4.05 ounces
Bang: 10¼"
Eartab: 9¾"
Nape: 6"
Top: 10 - 12"
Sides: 7½ - 9½"
Back: 6 - 7½"
Overall: 14"

Ref#: 4775
Color shown: 12H
Colors: 1BH, 4H, 5H, 6H, 7H, 8H, 8/14H, 8/27/26GR, 8/27/33H, 12H, 14H, 16H, 24H18, 26GR, 26H, 31H, 88GR, 614GR, 626H

Monofilament top with lace front



Kelly



Weight: 2.20 ounces
Bang: 4"
Eartab: 6½"
Nape: 1½"
Top: 3 - 8"
Sides: 4 - 6½"
Back: 1½ - 6½"
Overall: 8"

Ref#: 4745
Color shown: 60/101GR
Colors: 1BH, 4GR, 4H, 5H, 6H, 7H, 8H, 8/14H, 8/27/33H, 10/613GR, 12AH, 12H, 14H, 16H, 24H18, 25GR, 25H, 26GR, 26H, 27AH, 31H, 33H, 37, 38/56GR, 38H, 43, 44H, 51H, 56, 60/101GR, 60H, 88GR, 88H, 130H, 131GR, 614GR, 614H, 626H

Petite Average headsize
 Monofilament top



Grace

Weight: 1.75 ounces
Bang: 2 - 3"
Eartab: 2½"
Nape: 2¼"
Top: 2 - 3"
Sides: 2¼ - 2½"
Back: 2¼ - 2½"
Ref#: 4753
Color shown: 43
Colors: 1BH, 4H, 5H, 6H, 7H, 8H, 8/14H, 8/27/33H, 12AH, 12H, 14H, 16H, 24H18, 25H, 26H, 27AH, 31H, 37, 38/56GR, 38H, 43, 44H, 51H, 56, 60/101GR, 60H, 88H

Petite Average headsize
 Monofilament top with lace front



Hayden

Weight: 3.50 ounces
Bang: 7"
Eartab: 9"
Nape: 4"
Top: 5 - 10"
Sides: 6 - 9"
Back: 4 - 9"
Overall: 11½"
Ref#: 4763
Color shown: 8/14H
Colors: 1BH, 4GR, 4H, 5H, 6H, 7H, 8H, 8/14H, 8/27/33H, 10/613GR, 12H, 14H, 16H, 24H18, 25GR, 25H, 26GR, 26H, 27AH, 31H, 33H, 88GR, 88H, 130H, 614GR, 626H

Monofilament top with lace front





Scarlet



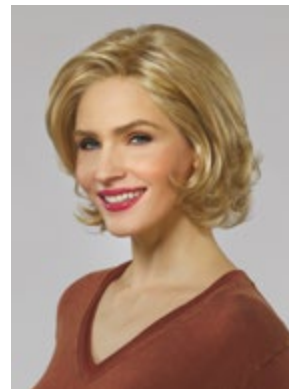
Weight: 4.30 ounces
Bang: 7"
Eartab: 8½"
Nape: 8½"
Top: 11"
Sides: 11"
Back: 11"
Overall: 15"

Ref#: 4770
Color shown: 14H
Colors: 1BH, 4GR, 4H, 5H, 6H, 7H, 8H, 8/14H, 8/27/26GR, 8/27/33H, 12AH, 12H, 14H, 16H, 24H18, 26GR, 26H, 27AH, 31H, 88GR, 130H, 131GR, 614GR

Monofilament top with lace front



Peyton



Weight: 3.00 ounces
Bang: 7"
Eartab: 7"
Nape: 4"
Top: 5 - 8½"
Sides: 4 - 7"
Back: 4 - 7"
Overall: 10½"

Ref#: 4761
Color shown: 25H
Colors: 1BH, 4GR, 4H, 5H, 6H, 7H, 8H, 8/14H, 8/27/33H, 10/613GR, 12H, 14H, 16H, 24H18, 25GR, 25H, 26GR, 26H, 27AH, 31H, 33H, 88GR, 88H, 130H, 131GR, 614GR, 626H

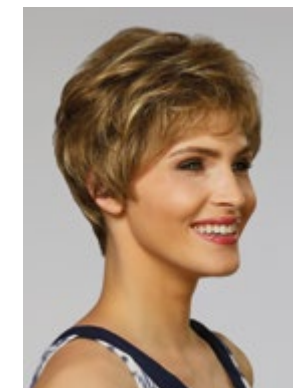
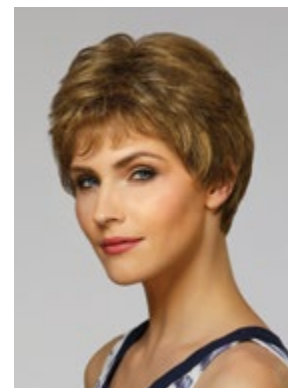
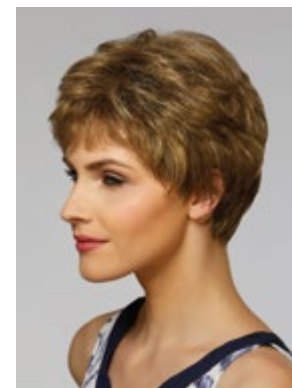
Monofilament top with lace front



Sabrina

Monica

Gianna



Sabrina

Weight: 1.80 ounces
Bang: 3½"
Eartab: 4"
Nape: 2½"
Top: 2¾ - 4¾"
Sides: 2½ - 4"
Back: 2½ - 4"

Ref#: 4731
Color shown: 6H
Colors: 1BH, 4H, 5H, 6H, 7H, 8H, 8/14H, 8/27/33H, 12H, 14H, 16H, 24H18, 25H, 26H, 27AH, 31H, 37, 38/56GR, 38H, 43, 44H, 51H, 56, 60/101GR, 60H, 88H

Petite headsize
 Monofilament top

Monica

Weight: 1.80 ounces
Bang: 2¾"
Eartab: 2¼"
Nape: 1¾"
Top: 2 - 3¼"
Sides: 2¼ - 2¾"
Back: 1¾ - 2¾"

Ref#: 4751
Color shown: 12H
Colors: 1BH, 4H, 5H, 6H, 7H, 8H, 8/14H, 8/27/33H, 12H, 14H, 16H, 24H18, 25H, 26H, 27AH, 33H, 37, 38, 38/56GR, 43, 44, 51, 56, 60, 60/101GR, 88H

Petite Average headsize
 Monofilament top with lace front

Gianna

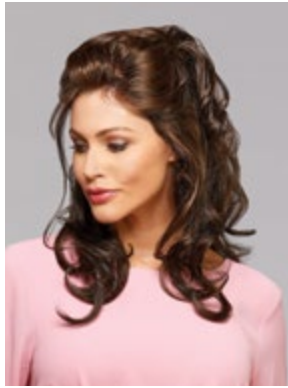
Weight: 2.40 ounces
Bang: 4"
Eartab: 4¼"
Nape: 4½"
Top: 3½ - 5½"
Sides: 4 - 4½"
Back: 4½ - 5"
Overall: 10"

Ref#: 4766
Color shown: 14H
Colors: 1BH, 4GR, 4H, 5H, 6H, 7H, 8H, 8/14H, 8/27/33H, 12AH, 12H, 14H, 16H, 24H18, 26GR, 26H, 27AH, 31H, 33H, 37, 38, 43, 44, 51, 56, 60, 88GR, 88H, 130H, 614H

Monofilament top with lace front



Avo



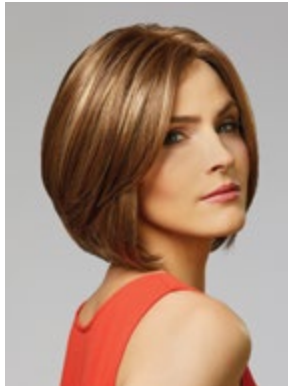
Weight: 5.65 ounces
Bang: 11½"
Eartab: 11½"
Nape: 15½"
Top: 11¼ - 11¾"
Sides: 11½ - 14½"
Back: 12½ - 15½"
Overall: 20"

Ref#: 4742
Color shown: 5H
Colors: 1BH, 4H, 5H, 6H, 7H, 8H, 8/14H, 8/27/33H, 12AH, 12H, 14H, 16H, 24H18, 26H, 27AH, 31H, 33H, 88H, 130H, 131H, 614H, 626H

Monofilament top with full lace front



Ohio



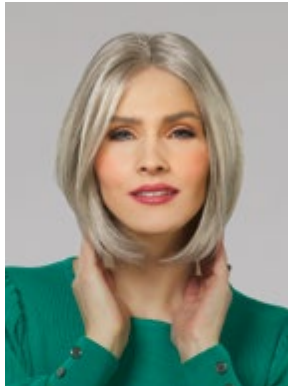
Weight: 3.30 ounces
Bang: 8½"
Eartab: 6½"
Nape: 3"
Top: 8½"
Sides: 6½ - 7½"
Back: 3 - 7½"
Overall: 10"

Ref#: 4522
Color shown: 8/27/33H
Colors: 1BH, 4H, 5H, 6H, 7H, 8H, 8/14H, 8/27/33H, 12H, 14H, 16H, 24H18, 26GR, 26H, 31H, 37, 38, 43, 56, 60, 88GR, 614H

100% hand-knotted stretch cap with monofilament top & lace front
 Medical application on front hairline, eartabs & nape



Nora



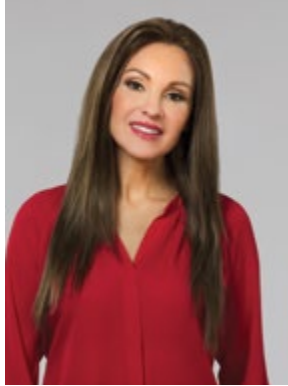
Weight: 3.15 ounces
Bang: 10 - 10¼"
Eartab: 6½"
Nape: 2½"
Top: 6½ - 9¼"
Sides: 6½ - 8¼"
Back: 8 - 8¼"
Overall: 11¾"

Ref#: 4515
Color shown: 56
Colors: 1BH, 4H, 5H, 6H, 7H, 8H, 8/14H, 8/27/33H, 12H, 14H, 16H, 24H18, 26H, 27AH, 31H, 33H, 37, 38, 43, 44, 60, 88H, 130H, 614H, 626H

100% hand-knotted stretch cap with monofilament top & lace front
 Medical application on eartabs



Violet



Weight: 6.15 ounces
Bang: 13 - 15"
Eartab: 15 - 17"
Nape: 15"
Top: 15 - 17"
Sides: 15 - 17"
Back: 15 - 17"
Overall: 24"

Ref#: 4516
Color shown: 7H
Colors: 1BH, 4H, 5H, 6H, 7H, 8H, 8/14H, 8/27/33H, 12AH, 12H, 14H, 16H, 24H18, 26H, 27AH, 33H, 88H, 614H, 626H

100% hand-knotted stretch cap with monofilament top & lace front.
 Medical application on eartabs.



Skylar



Lori



Trish



Skylar

Weight: 1.70 ounces
 Bang: 2½"
 Eartab: 2½"
 Nape: 2"
 Top: 2¼ - 3¾"
 Sides: 2¼ - 3¼"
 Back: 1¾ - 3¾"
 Ref#: 4519
 Color shown: 8/27/33H
 Colors: 1BH, 4H, 5H, 6H, 7H, 8H, 8/14H, 8/27/33H, 12AH, 12H, 14H, 16H, 24H18, 26H, 27AH, 31H, 33H, 37, 38, 43, 44, 51, 56, 60, 88H
 Petite Average headsize
 Monofilament top with lace front



Lori

Weight: 1.65 ounces
 Bang: 2½"
 Eartab: 2½"
 Nape: 2¼"
 Top: 2½ - 3"
 Sides: 2¼ - 2¾"
 Back: 2¼ - 2¾"
 Ref#: 4514
 Color shown: 33H
 Colors: 4H, 5H, 6H, 7H, 8H, 8/14H, 8/27/33H, 12H, 14H, 16H, 24H18, 26H, 27AH, 33H, 37, 38, 43, 44, 51, 56, 60, 88H
 Petite Average headsize
 Monofilament top with lace front



Trish

Weight: 1.75 ounces
 Bang: 3"
 Eartab: 2½"
 Nape: 2½"
 Top: 2½ - 3"
 Sides: 2½ - 3"
 Back: 2½ - 3"
 Ref#: 4513
 Color shown: 5H
 Colors: 4H, 5H, 6H, 7H, 8H, 8/14H, 8/27/33H, 12H, 14H, 24H18, 26H, 31H, 37, 38, 43, 44, 51, 56, 60, 88H
 Petite Average headsize
 Monofilament top with lace front

Henry Margu

Trend-setting styles, cutting edge colorations and incomparable quality create the ultimate in hair fashions at Henry Margu. The expertise acquired from the exceptional specialized product lines produced by Henry Margu assist in creating some of the most popular and successful ready-to-wear, wefted styles in today's marketplace. Beautifully crafted designs in all lengths and textures are easy to style, comfortable to wear and affordably priced for all to enjoy. Many styles have the benefit of lace fronts and mono parts or a combination of the two to create amazingly natural and realistic looks.

At Henry Margu, it's all about the hair and our pleasure to make great hair easy!

Check out the following pages to see the full range of Henry Margu wigs.



Style shown: Lola in 10/613GR



Norri.



Weight: 2.40 ounces
Bang: 7½"
Eartab: 6"
Nape: 2"
Top: 4½ - 7½"
Sides: 3½ - 6"
Back: 2 - 6"
Overall: 8½"

Ref#: 2493
Color shown: 5H
Colors: 1BH, 4GR, 5H, 6H, 7H, 8H, 8/14H, 8/27/26GR, 10/613GR, 12H, 14H, 24H18, 25GR, 25H, 26GR, 26H, 27AH, 31H, 88GR, 614GR

Monofilament part with lace front



Candace

Weight: 3.75 ounces
Bang: 10"
Eartab: 10"
Nape: 8"
Top: 9 - 14"
Sides: 5 - 13"
Back: 5 - 13"
Overall: 15"

Ref#: 2492
Color shown: 626H
Colors: 1BH, 4H, 5H, 6H, 7H, 8H, 8/14H, 8/27/26GR, 10/613GR, 12H, 14H, 16H, 24H18, 25GR, 25H, 26GR, 31H, 88GR, 131GR, 614GR, 626H

Monofilament part with lace front

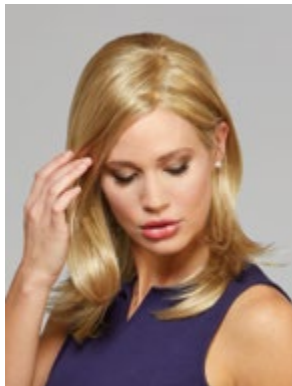
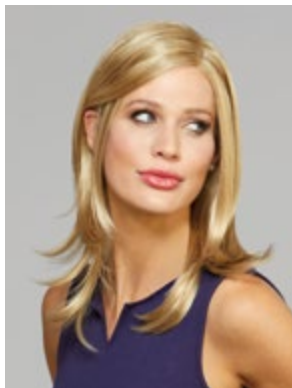


Presley

Weight: 4.80 ounces
Bang: 10¼"
Eartab: 10¾"
Nape: 11¾"
Top: 9 - 13"
Sides: 9 - 12"
Back: 9 - 12"
Overall: 18½"

Ref#: 2478
Color shown: 26H
Colors: 1BH, 4GR, 4H, 5H, 6H, 7H, 8H, 8/14H, 8/27/33H, 12H, 14H, 16H, 24H18, 26GR, 26H, 27AH, 31H, 88GR, 131GR, 614GR, 626H

Monofilament part with lace front





Tiffany



Harper



Dylan



Tiffany

Weight: 3.75 ounces
Bang: 7"
Eartab: 9"
Nape: 6½"
Top: 4 - 10½"
Sides: 7½ - 9"
Back: 6½ - 9"
Overall: 13"

Ref#: 2473
Color shown: 626H
Colors: 1BH, 4GR, 4H, 5H, 6H, 7H, 8H, 8/14H, 8/27/33H, 10/613GR, 12H, 14H, 16H, 24H18, 25GR, 25H, 26GR, 26H, 27AH, 31H, 88GR, 88H, 131GR, 626H

Lace front



Harper

Weight: 4.70 ounces
Bang: 6½"
Eartab: 13½"
Nape: 12"
Top: 8½ - 12"
Sides: 5 - 13½"
Back: 5 - 13½"
Overall: 18"

Ref#: 2472
Color shown: 14H
Colors: 1BH, 4GR, 4H, 5H, 6H, 7H, 8H, 8/14H, 8/27/26GR, 8/27/33H, 10/613GR, 12AH, 12H, 14H, 16H, 24H18, 25GR, 25H, 26GR, 26H, 27AH, 31H, 33H, 88GR, 88H, 130H, 131GR, 614GR, 614H, 626H

Lace front



Dylan

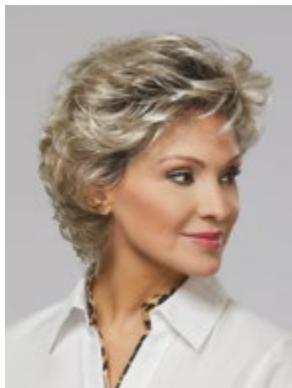
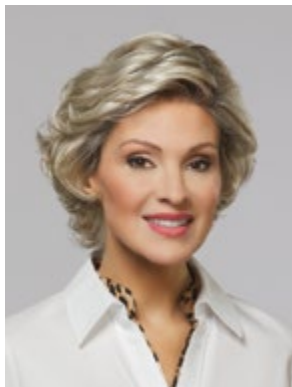
Weight: 2.15 ounces
Bang: 4 - 6"
Eartab: 2¼"
Nape: 1¾"
Top: 2¼ - 6"
Sides: 1¾ - 3¼"
Back: 1½ - 3¼"

Ref#: 2475
Color shown: 24H18
Colors: 1BH, 4H, 5H, 6H, 7H, 8H, 8/14H, 8/27/33H, 10/613GR, 12H, 14H, 16H, 24H18, 26GR, 26H, 31H, 33H, 37, 38/56GR, 43, 51H, 56, 60/101GR, 60H, 88GR, 88H, 131GR, 614GR

Lace front



Lindsay



Weight: 2.35 ounces
Bang: 4"
Eartab: 4"
Nape: 4"
Top: 3½ - 6"
Sides: 3½ - 4½"
Back: 3½ - 4½"

Ref#: 2491
Color shown: 10/613GR
Colors: 1BH, 4GR, 4H, 5H, 6H, 7H, 8H, 8/14H, 8/27/26GR, 8/27/33H, 10/613GR, 12AH, 12H, 14H, 16H, 24H18, 25GR, 25H, 26GR, 26H, 27AH, 31H, 33H, 37, 38/56GR, 43, 51H, 56, 60/101GR, 60H, 88GR, 88H, 130H, 614GR

Monofilament part with lace front



Willow



Weight: 5.05 ounces
Bang: 8"
Eartab: 16"
Nape: 16"
Top: 13"
Sides: 11½ - 16"
Back: 11½ - 16"
Overall: 23"

Ref#: 2495
Color shown: 7H
Colors: 1BH, 4H, 5H, 6H, 7H, 8H, 8/14H, 8/27/26GR, 10/613GR, 12H, 14H, 16H, 24H18, 25GR, 25H, 26GR, 26H, 31H, 88GR, 131GR, 614GR, 626H

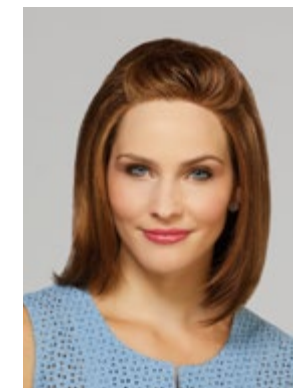
Monofilament part with lace front



Celine

Faith

Brooklyn



Celine

Weight: 5.40 ounces
Bang: 3"
Eartab: 15"
Nape: 13"
Top: 12 - 17"
Sides: 15 - 17"
Back: 13 - 17"
Overall: 19"

Ref#: 2457
Color shown: 131H
Colors: 1BH, 4H, 5H, 6H, 7H, 8H, 8/14H, 8/27/33H, 12H, 14H, 16H, 24H18, 26H, 31H, 130H, 131H, 614H
Monofilament crown area

Faith

Weight: 1.65 ounces
Bang: 3"
Eartab: 2½"
Nape: 2¼"
Top: 1¾ - 3½"
Sides: 2½"
Back: 1¾ - 3½"

Ref#: 2441
Color shown: 8/27/33H
Colors: 1BH, 4GR, 4H, 5H, 6H, 7H, 8H, 8/14H, 8/27/26GR, 8/27/33H, 10/613GR, 12AH, 12H, 14H, 16H, 24H18, 25GR, 25H, 26GR, 26H, 27AH, 31H, 33H, 37, 38, 38/56GR, 43, 44, 51, 56, 60, 60/101GR, 88GR, 88H, 130H, 131GR, 614GR, 614H
Petite headsize
Monofilament crown area

Brooklyn

Weight: 3.25 ounces
Bang: 8"
Eartab: 8"
Nape: 4½"
Top: 12"
Sides: 10"
Back: 9½"
Overall: 12"

Ref#: 2480
Color shown: 31H
Colors: 1BH, 4GR, 4H, 5H, 6H, 7H, 8H, 8/14H, 8/27/26GR, 8/27/33H, 12AH, 12H, 14H, 16H, 24H18, 26GR, 26H, 27AH, 31H, 33H, 88GR, 88H, 131GR, 614GR
Petite Average headsize
Monofilament part with lace front



Bonnie



Weight: 1.65 ounces
Bang: 3½"
Eartab: 2½"
Nape: 2"
Top: 2 - 3½"
Sides: 2 - 2½"
Back: 2 - 2½"

Ref#: 2458
Color shown: 38/56GR
Colors: 1BH, 4H, 5H, 6H, 7H, 8H, 8/14H, 8/27/33H, 12AH, 12H, 14H, 16H, 24H18, 25H, 26H, 27AH, 31H, 33H, 37, 38, 38/56GR, 43, 44, 51, 56, 60, 60/101GR, 88H, 614H

Petite Average headsize
 Lace front



Jules



Weight: 2.75 ounces
Bang: 7"
Eartab: 5½"
Nape: 4½"
Top: 3¼ - 7½"
Sides: 3¼ - 6½"
Back: 4½ - 6½"
Overall: 10"

Ref#: 2481
Color shown: 26H
Colors: 1BH, 4GR, 4H, 5H, 6H, 7H, 8H, 8/14H, 8/27/26GR, 8/27/33H, 10/613GR, 12AH, 12H, 14H, 16H, 24H18, 25GR, 25H, 26GR, 26H, 27AH, 31H, 33H, 60/101GR, 88GR, 88H, 130H, 131GR, 614GR, 614H, 626H

Lace front



Lois

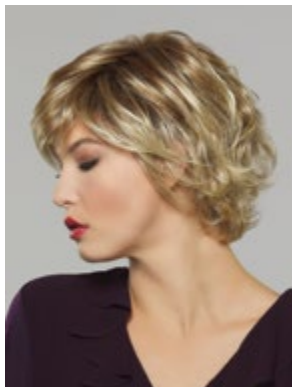


Weight: 4.15 ounces
Bang: 5"
Eartab: 9"
Nape: 7"
Top: 5½ - 9"
Sides: 9"
Back: 7 - 9"
Overall: 12"

Ref#: 2487
Color shown: 10/613GR
Colors: 1BH, 4H, 5H, 7H, 8H, 8/27/26GR, 8/27/33H, 10/613GR, 12H, 14H, 16H, 24H18, 25GR, 25H, 26GR, 31H, 88GR, 131GR



Gabby



Weight: 2.30 ounces
Bang: 4½"
Eartab: 4½"
Nape: 3½"
Top: 4 - 5¾"
Sides: 3½ - 4½"
Back: 3½ - 4½"

Ref#: 2450
Color shown: 88GR
Colors: 1BH, 4H, 5H, 6H, 7H, 8H, 8/14H, 8/27/33H, 10/613GR, 12H, 14H, 16H, 24H18, 25GR, 25H, 26GR, 26H, 27AH, 31H, 33H, 88GR, 88H, 131GR, 614GR, 626H



Danielle

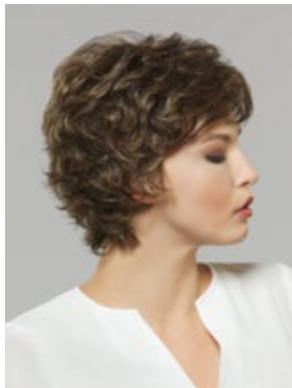
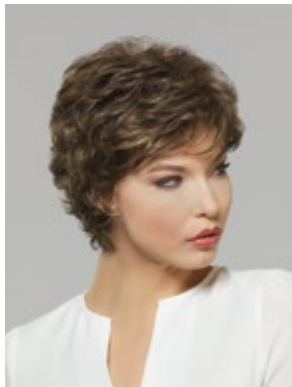
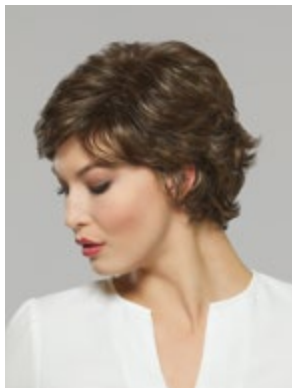


Weight: 3.25 ounces
Bang: 4½"
Eartab: 7"
Nape: 7"
Top: 3½ - 6¼"
Sides: 6¼ - 7¾"
Back: 5½ - 7¾"
Overall: 14½"

Ref#: 2409
Color shown: 626H
Colors: 1BH, 4H, 5H, 6H, 7H, 8H, 8/14H, 8/27/33H, 12H, 14H, 16H, 24H18, 26H, 27AH, 33H, 88H, 130H, 614H, 626H



Bailey



Weight: 2.25 ounces
Bang: 4¼"
Eartab: 3½"
Nape: 3"
Top: 3¾"
Sides: 3 - 3½"
Back: 3 - 3½"

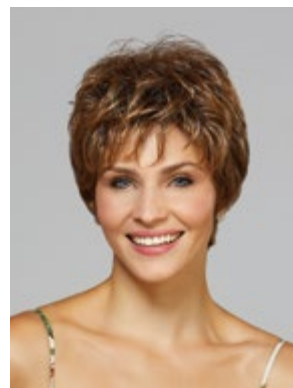
Ref#: 2439
Color shown: 7H
Colors: 1BH, 4H, 5H, 6H, 7H, 8H, 8/14H, 8/27/26GR, 8/27/33H, 12H, 14H, 16H, 24H18, 26GR, 26H, 27AH, 33H, 37, 38H, 43, 44H, 51H, 56, 60H, 88GR, 88H, 614GR



Elena

Weight: 2.00 ounces
Bang: 4"
Eartab: 3½"
Nape: 2½"
Top: 2¾ - 4"
Sides: 2½ - 4"
Back: 2½ - 4"

Ref#: 2501
Color shown: 8/27/33H
Colors: 1BH, 4H, 6H, 7H, 8H, 8/14H, 8/27/33H, 12H, 14H, 16H, 24H18, 26H, 27AH, 33H, 37, 38H, 43, 51H, 56, 60H, 88H, 614H



Felicio

Weight: 4.20 ounces
Bang: 5"
Eartab: 9"
Nape: 7"
Top: 6 - 9"
Sides: 8 - 9"
Back: 7 - 9"
Overall: 13"

Ref#: 2452
Color shown: 8/14H
Colors: 1BH, 4GR, 4H, 5H, 6H, 7H, 8H, 8/14H, 8/27/33H, 12AH, 12H, 14H, 16H, 24H18, 26GR, 26H, 27AH, 31H, 33H, 88H, 130H, 131GR, 614GR, 614H, 626H





Kayla

Jessica

Nikki



Kayla

Weight: 2.95 ounces
Bang: 4"
Eartab: 5"
Nape: 5"
Top: 4 - 4½"
Sides: 4½ - 5½"
Back: 4½ - 5½"

Ref#: 2351
Color shown: 12H
Colors: 1BH, 4H, 5H, 6H, 7H, 8H, 8/14H, 8/27/33H, 12AH, 12H, 14H, 16H, 24H18, 26H, 27AH, 33H, 37, 38, 43, 44, 51, 56, 60, 88H, 130H, 131H, 614H

Jessica

Weight: 1.95 ounces
Bang: 2¾"
Eartab: 2¼"
Nape: 1¾"
Top: 1¾ - 3¼"
Sides: 2¼ - 2¾"
Back: 1¾ - 2¾"

Ref#: 2485
Color shown: 8/14H
Colors: 4H, 5H, 6H, 7H, 8H, 8/14H, 8/27/33H, 12AH, 12H, 14H, 16H, 24H18, 25H, 26H, 27AH, 31H, 37, 38, 38/56GR, 43, 44, 51, 56, 60, 60/101GR, 88H

Nikki

Weight: 2.25 ounces
Bang: 4½"
Eartab: 4½"
Nape: 4½"
Top: 3½ - 5½"
Sides: 4 - 5"
Back: 4 - 5"
Overall: 12½"

Ref#: 2393
Color shown: 626H
Colors: 1BH, 4GR, 4H, 5H, 6H, 7H, 8H, 8/14H, 8/27/33H, 12H, 14H, 16H, 24H18, 26GR, 26H, 27AH, 31H, 33H, 37, 38, 43, 51, 56, 60, 88GR, 88H, 614GR, 626H



Marnie



Weight: 1.75 ounces
Bang: 4"
Eartab: 3½"
Nape: 2¾"
Top: 2¾ - 4"
Sides: 2½ - 3½"
Back: 2½ - 3½"

Ref#: 2500
Color shown: 14H
Colors: 1BH, 4GR, 4H, 6H, 7H, 8H, 8/14H, 8/27/33H, 12H, 14H, 16H, 24H18, 26GR, 26H, 27AH, 33H, 37, 43, 44, 51, 56, 60, 88GR, 88H, 130H, 131GR, 614GR



Chloee



Weight: 2.35 ounces
Bang: 4¾"
Eartab: 4"
Nape: 5"
Top: 4¾ - 5¼"
Sides: 3½ - 5"
Back: 3½ - 4"
Overall: 13"

Ref#: 2434
Color shown: 8H
Colors: 1BH, 4H, 5H, 6H, 7H, 8H, 8/14H, 8/27/33H, 12H, 14H, 16H, 24H18, 26GR, 33H, 88GR, 88H, 131GR, 614GR, 626H



Savannah



Weight: 4.00 ounces
Bang: 6"
Eartab: 11"
Nape: 10"
Top: 5 - 10½"
Sides: 9 - 11"
Back: 9½ - 11"
Overall: 16

Ref#: 2437
Color shown: 8/27/26GR
Colors: 1BH, 4H, 5H, 6H, 7H, 8H, 8/14H, 8/27/26GR, 8/27/33H, 12AH, 12H, 14H, 24H18, 26GR, 26H, 27AH, 31H, 88GR, 88H, 131GR, 614GR, 626H



Paige



Weight: 3.30 ounces
Bang: 3½"
Eartab: 7½"
Nape: 5"
Top: 3½ - 7½"
Sides: 6½ - 7½"
Back: 5 - 7½"
Overall: 11"

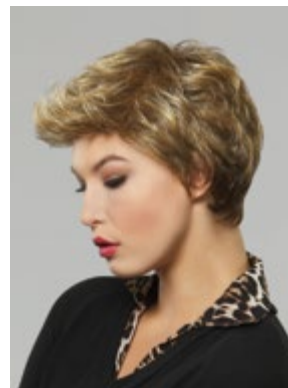
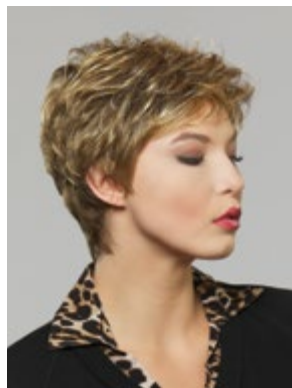
Ref#: 2482
Color shown: 6H
Colors: 1BH, 4GR, 4H, 5H, 6H, 7H, 8H, 8/14H, 8/27/33H, 10/613GR, 12AH, 12H, 14H, 16H, 24H18, 25GR, 25H, 26GR, 26H, 27AH, 31H, 33H, 88H, 130H, 131GR, 614GR, 626H



Emily

Holly

Ruby



Emily

Weight: 1.75 ounces
Bang: 3½"
Eartab: 3"
Nape: 2"
Top: 2 - 3½"
Sides: 2 - 3"
Back: 2 - 3"

Ref#: 2503
Color shown: 37
Colors: 4H, 5H, 6H, 7H, 8H, 8/14H, 8/27/33H, 12AH, 12H, 14H, 16H, 24H18, 25H, 26H, 37, 38/56GR, 38H, 43, 44H, 51H, 56, 60/101GR, 60H, 88H

Holly

Weight: 2.75 ounces
Bang: 5½"
Eartab: 5"
Nape: 2"
Top: 8"
Sides: 5½"
Back: 5"
Overall: 9½"

Ref#: 2445
Color shown: 14H
Colors: 1BH, 4GR, 4H, 5H, 6H, 7H, 8H, 8/14H, 8/27/33H, 12H, 14H, 16H, 24H18, 26GR, 26H, 27AH, 31H, 33H, 37, 38, 43, 51, 56, 60, 88GR, 131GR, 614GR, 626H

Ruby

Weight: 1.90 ounces
Bang: 3"
Eartab: 2½"
Nape: 2¼"
Top: 2 - 3"
Sides: 2¼ - 2½"
Back: 2¼ - 2½"

Ref#: 2467
Color shown: 24H18
Colors: 4H, 5H, 6H, 7H, 8H, 8/14H, 8/27/33H, 12H, 14H, 16H, 24H18, 25H, 26H, 27AH, 31H, 33H, 37, 38/56GR, 38H, 43, 44H, 51H, 56, 60/101GR, 60H, 88H

Petite Average headsize



Jayode

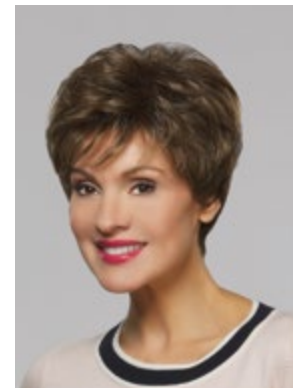


Weight: 3.40 ounces
Bang: 4½"
Eartab: 6½"
Nape: 3"
Top: 9½"
Sides: 6 - 8"
Back: 2¾ - 8"
Overall: 10½"

Ref#: 2455
Color shown: 614GR
Colors: 1BH, 4H, 5H, 6H, 7H, 8H, 8/14H, 8/27/33H, 12H, 14H, 16H, 24H18, 26GR, 26H, 88H, 614GR, 614H



Annette



Weight: 1.95 ounces
Bang: 3½"
Eartab: 2½"
Nape: 2"
Top: 2½ - 5"
Sides: 2½ - 3"
Back: 2 - 3½"

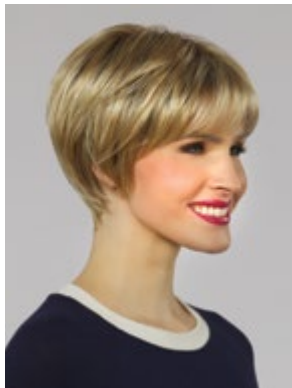
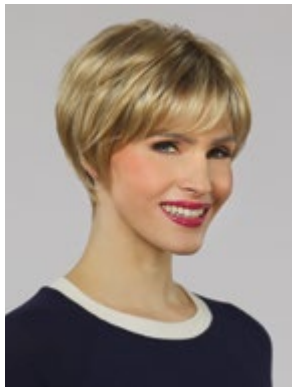
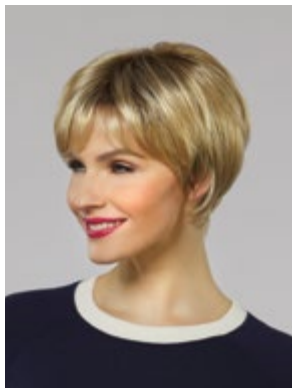
Ref#: 2369
Color shown: 7H
Colors: 1BH, 4GR, 4H, 5H, 6H, 7H, 8H, 8/14H, 8/27/26GR, 8/27/33H, 10/613GR, 12AH, 12H, 14H, 16H, 24H18, 25GR, 25H, 26GR, 26H, 27AH, 33H, 37, 38/56GR, 38H, 43, 44H, 51H, 56, 60/101GR, 60H, 88GR, 88H, 130H, 131GR, 614GR, 614H



Audrey

Weight: 2.25 ounces
Bang: 4 1/2"
Eartab: 3"
Nape: 2"
Top: 4 1/2 - 6"
Sides: 2 - 3"
Back: 2 - 5 1/2"

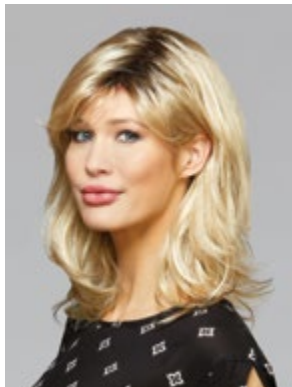
Ref#: 2430
Color shown: 25GR
Colors: 1BH, 4H, 5H, 6H, 7H, 8H, 8/14H, 8/27/33H, 12AH, 12H, 14H, 16H, 24H18, 25GR, 25H, 26GR, 26H, 27AH, 37, 38H, 43, 51H, 56, 60H, 88GR, 88H, 614GR, 614H



Bethanny

Weight: 4.05 ounces
Bang: 5"
Eartab: 11"
Nape: 11 1/2"
Top: 11"
Sides: 11"
Back: 11"
Overall: 18"

Ref#: 2444
Color shown: 26GR
Colors: 1BH, 4GR, 4H, 5H, 6H, 7H, 8H, 8/14H, 8/27/33H, 12AH, 12H, 14H, 16H, 24H18, 26GR, 26H, 27AH, 31H, 33H, 88GR, 130H, 131GR, 614GR, 626H





Amelia



Amber



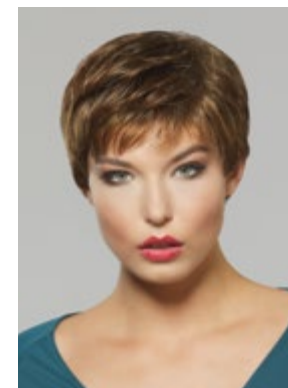
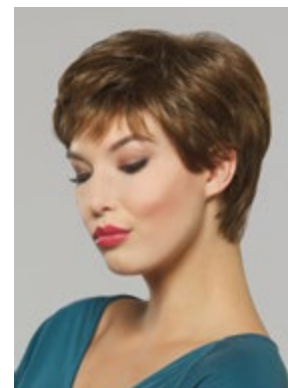
Piper



Amelia

Weight: 1.80 ounces
Bang: 3¾"
Eartab: ¾"
Nape: 2¾"
Top: ¾"
Sides: ¾ - ¾"
Back: ¾ - ¾"

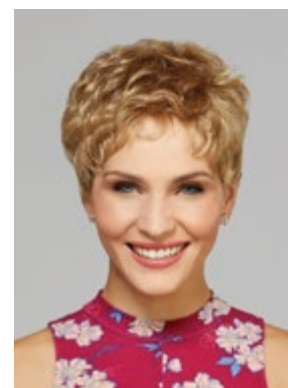
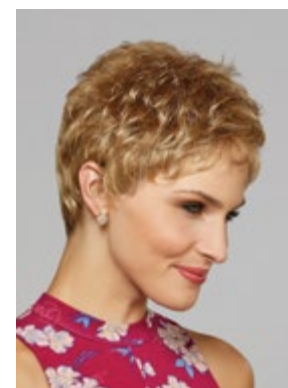
Ref#: 2507
Color shown: 26H
Colors: 1BH, 4H, 6H, 8H, 8/14H, 12H, 14H, 16H, 24H18, 26H, 33H, 38, 43, 44, 51, 56, 60



Amber

Weight: 2.00 ounces
Bang: 2½"
Eartab: 3"
Nape: 2"
Top: 2 - 4"
Sides: 2 - 3"
Back: 2 - 3"

Ref#: 2461
Color shown: 12AH
Colors: 1BH, 4H, 5H, 6H, 7H, 8H, 8/14H, 8/27/33H, 12AH, 12H, 14H, 16H, 24H18, 25H, 26H, 27AH, 31H, 37, 38, 38/56GR, 43, 51, 56, 60, 60/101GR, 88H, 131GR



Piper

Weight: 1.55 ounces
Bang: 2¼"
Eartab: 2¼"
Nape: 1¾"
Top: 2¼"
Sides: 1¾ - 2½"
Back: 1¾ - 2¼"

Ref#: 2502
Color shown: 14H
Colors: 1BH, 4H, 5H, 6H, 7H, 8H, 8/14H, 8/27/33H, 12H, 14H, 16H, 24H18, 26H, 37, 38, 43, 44, 51, 56, 60, 88H

Petite headsize

Designed for comfort, **Hair Accents®** beautifully blended hair is permanently attached to a 100% cotton baseball cap creating a ready-to-wear hair fashion alternative with absolutely no styling needed. All Hair Accents styles are available in 12 naturally highlighted colors in a black or beige colored baseball cap. Shorty Cap is available in grey shades as well. **Classic Hat is now also available in a NEW Navy color!**



Classic Hat Black

Ref#: 8226
Color shown: 12H
Length: 8"



Long Hat Beige

Ref#: 8229
Color shown: 6H
Length: 14"



Long Hat Black

Ref#: 8227
Color shown: 30H
Length: 14"

Classic Hat Beige

Ref#: 8228
Color shown: 16H
Length: 8"

Classic Hat Navy

Ref #: 8258
Color shown: 8H
Length: 8"

Shorty Hat Black

Ref#: 8225
Color shown: 14H
Length: 5½"

Curly Hat Black

Ref#: 8249
Color shown: 27AH
Length: 9"

Shorty Hat Beige

Ref#: 8230
Color shown: 27AH
Length: 5½"

Bands & Bangs



Classic Band

Ref#: 2323
Color shown: 14H
Weight: 3.55 ounces
Overall length: 14"
2½ inch permanently attached black headband

Left photo shows 228 Bang attached to headband

Bang

Ref#: 228
Overall length: 3½ - 4½"



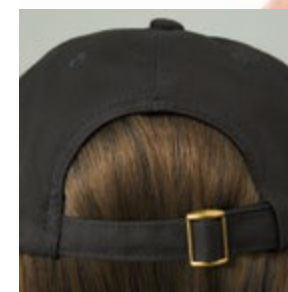
Classic Band & Bang are available in colors:

1BH, 4H, 6H, 7H, 8H, 8/27/33H, 12AH, 12H, 14H, 16H, 24H18, 26H, 27AH, 33H, 38, 44, 51, 56, 60, 130H, 614H



Shorty Hat is available in colors:

1BH, 4H, 6H, 8H, 12AH, 12H, 14H, 16H, 24H18, 27AH, 30H, 38, 44, 51, 60, 614H



Cap size adjustment to easily and comfortably fit all head sizes.

Classic Hat, Long Hat & Curly Hat are available in colors:
1BH, 4H, 6H, 8H, 12AH, 12H, 14H, 16H, 24H18, 27AH, 30H, 614H

Halos

Halo is created with comfort in mind while offering a simple solution to hair loss. Ready-to-wear with no styling needed, Halo is a fast and easy option to a wig when running errands, dropping the kids at school or a trip to the grocery store.

Halo is a realistic wig alternative creating the illusion of a full head of hair. Comfortably fitting the circumference of the head, three silicone patches in the front and ultra-thin adjustments in the back personalize the fit and assist in securing Halo to the head.

Halo and Halo Long are available in colors: 1BH, 4H, 6H, 7H, 8H, 12H, 14H, 24H18, 26H, 27AH, 31H, 33H, 51, 60



Color Shown: 26H



Halo Long

Ref #: 8256
Color Shown: 26H
Weight: 2.75 ounces
Bang: 6¼"
Sides: 13"
Back: 13¼"

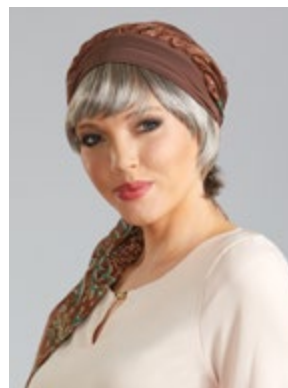


Color Shown: 31H



Halo

Ref #: 8255
Color Shown: 12H
Weight: 1.05 ounces
Bang: 5¼"
Sides: 5¼"
Back: 4½"



Color Shown: 51



Color Shown: 24H18

Pairing perfectly with a hat, scarf, turban and most baseball caps, Halo is exceptionally lightweight and available in two lengths; a short chin length and a below the shoulder version. Beautifully highlighted colors assure a close match to any hair color. When a wig is a hassle, just slip on Halo for a beautiful, believable new look.

Headwear not included!



Color Shown: 27AH



Hairpieces



Sassy

Ref#: 8213
Color shown: 26H
Overall length: 8½"
 Quick Combs®
 interlocking comb
 hairpiece

Temptation & Whirlwind are available in colors: 1BH, 4H, 6H, 8H, 12H, 14H, 16H, 24H 18, 26H, 33H, 88H, 614H

Sassy & Charm are available in colors: 1BH, 4H, 6H, 8H, 12H, 14H, 16H, 24H 18, 26H, 33H, 38, 51, 56, 60, 88H, 614H

Breezy is available in colors: 1BH, 4H, 6H, 8H, 12AH, 14H, 16H, 24H 18, 26H, 33H, 88H, 131H, 614H



Temptation

Ref#: 8224
Color shown: 88H
Overall length: 24"
 Quick Combs®
 butterfly comb hairpiece



Charm

Ref#: 8220
Color shown: 88H
Overall length: 7"
 Quick Combs®
 butterfly comb hairpiece



Breezy

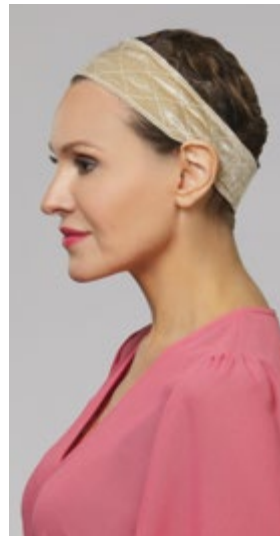
Ref#: 8089
Color shown: 12AH
Overall length: 24"
 3/4 cap hairpiece



Whirlwind

Ref#: 8223
Color shown: 8H
Overall length: 15 - 16"
 Quick Combs®
 butterfly comb hairpiece

Accessories



Secure Grip

The perfect accessory to achieve a secure fit for wigs. Elasticized velour fabric with a Velcro closure comfortably stretches to secure wigs and other headwear from slipping or moving on the head.

Available individually packaged in Beige, Black & Brown.

Accessory Mannequins

Enhancing the presentation of wigs and hairpieces, Shelby (17") and Alexa (25") have a natural skin tone and soft makeup to accentuate any hair color. Produced in a unique flexible PVC material that will resist scratching and chipping, these accessory heads will keep your display looking amazing for many years to come.



Alexa



Shelby



Wig Care Products

Cleanse, Finish, Revitalize & Shape are specifically formulated to enhance and prolong the life of our exceptional wigs and hairpieces.

Henry Margu wig care products are available in cases of 12 eight ounce bottles.

Comfort Cap

Mesh wig liner designed to keep the wearer cool and comfortable while preventing movement and slipping for a more secure fit.

Available in Beige, Black, Cream & Grey and packaged a dozen per color.



Bamboo Cap

Exceptionally absorbent, breathable and ultra-soft, our Bamboo Cap is incredibly cool and comfortable to wear. Hypo-allergenic with natural antibacterial properties makes it resistant to odor and bacteria.

Available individually packaged in Beige, Black & Brown.



Wig Stands

Folding wig stands are ideal for storing and/or drying wigs. Made of sturdy plastic or metal, these convenient stands are easy to assemble and lay flat for traveling ease.

Cap Construction



Traditional
Traditional cap construction features a fine net material in the top area with an open cap in the back. Weftings attached to stretch elastic lace make the open back creating better ventilation to keep the head cooler. A Traditional cap or a wig utilizing components of this type of cap construction is often referred to as a "machine-made" cap.



Open Cap/Featherlight
Open cap is commonly referred to as a "capless" wig due to the lack of net material used in the top as on a Traditional cap and as a result making the wig better ventilated throughout. The entire cap is produced with weftings attached to thin stretch elastic lace. Our exclusive ultra thin weftings used in the Featherlight cap create super lightweight wigs that are exceptionally cool and comfortable to wear.



Lace Front
A lace front wig has a hairline made of a fine lace mesh in which each hair is individually hand knotted. The lace varies in width from ¼ to 1½ inches. The lace typically extends across the entire front hairline. The benefit of a lace front wig is an amazingly realistic hairline that appears as if the hair is growing directly out of the scalp and allows the fiber in front to be styled off the face in any direction.

The neutral color of the lace mesh takes on the skin tone of the wearer making the hairline more natural looking and virtually invisible. A Lace Front can be utilized on wigs of any type cap construction.



Hand Knotted
A Hand-Knotted wig is also referred to as a Hand-Tied wig. Hand-Tied wigs are made with a soft stretch lace base and 100% of the fiber is individually hand knotted onto the lace base. This type of cap is lightweight and exceptionally comfortable as the lace feels soft against the head. Hand-Tied wigs are produced with a Mono Top making them extremely natural looking as well and making this type of wig the most luxurious available.



Monofilament Top
Monofilament (Mono) is an extremely sheer mesh used to make a transparent base that creates a realistic looking scalp area and is then hand-knotted with individual fibers to simulate the appearance of natural hair growth. The fiber in a Monofilament Top (Mono Top) allows for multidirectional styling and parting the hair on the left, right or center creating amazing styling versatility and resulting in an extremely natural looking appearance. A Mono Top feels smoother against the scalp than a Traditional or Open Cap and more comfortable as a result. Often a Mono Top will have a polyurethane strip in the front of the mono area to help create a more secure fit.



Monofilament Top with Lace Front
Mono Top with Lace Front wigs are produced the same as a Mono Top wig but utilizing a Lace Front as well to create the most natural front hairline in conjunction with the realistic characteristics of a Mono Top. This allows for amazing off the face styling versatility as well as the flexibility to part hair on the left or right or in the center to achieve multiple styling variations. These wigs offer the most natural and realistic appearance due to the combination of the Mono and Lace Front.



Monofilament Part
A Monofilament Part (Mono Part) cap contains a wide Mono Part area on a machine-made cap and allows the wearer to style a conventional part or a more fashionable zigzag part for the most realistic appearance.



Monofilament Crown
A Monofilament Crown (Mono Crown) cap contains a Mono area in the top area of a machine-made cap. This allows for the fiber in this area to have a more natural and realistic appearance and is often used on shorter wig styles in the crown or in the center area of a style that is flatter and with less volume in the top.

Color Swatches



Gradient colors





Amber 72



Amelia 72



Annette 69



Athena -M/L 17



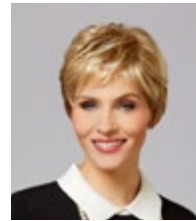
Audrey 70



Ava M/L 36



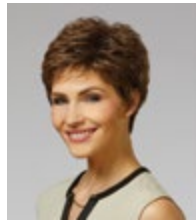
Bailey 57



Becky-M 24



Jayde 68



Jessica 60



Jules-L 53



Kayla 60



Kelly-PA/M 29



Kendall-M/L 20



Lindsay-MP/L 48



Lola 54



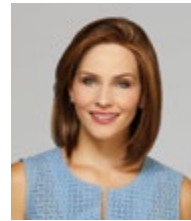
Bethany 71



Bonnie-PA/L 52



Breezy 78



Brooklyn-PA/MP/L 50



Candace-MP/L 44



Celine 50



Charlotte-M/L 24



Charm 78



Long Hat 74



Lori-PA/M/L 40



MadiIn-PA/M/L 19



Marnie 62



Michele-M/L 18



Monica-PA/M/L 34



Naomi-MP/L 43



Natalie-M/L 28



Chic-H/M/L 37



Chloe 63



Classic Band 75



Classic Hat 74



Curly Hat 75



Danielle 56



Diamond-HH/H/M/L 13



Dylan-L 46



Nikki 60



Nora-H/M/L 38



Paige 65



Peyton-M/L 33



Piper-P 72



Presley-MP/L 45



Ruby-PA 66



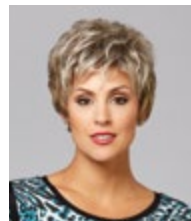
Sabrina-P/M 34



Elena 58



Emerald-HH/H/M/L 15



Emily 66



Faith-P 50



Farrah-M/L 27



Felicia 59



Fiona-M/L 23



Gabby 55



Sapphire-HH/H/M/L 14



Sassy 78



Savannah 64



Scarlet-M/L 32



Shorty Hat 75



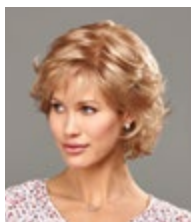
Skylar-PA/M/L 40



Stella-M 24



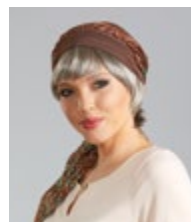
Taylor-M 26



Gianna-M/L 34



Grace-PA/M/L 30



Halos 76-77



Hannah-M/L 22



Harper-L 46



Hayden-M/L 31



Holly 66



Iris-M/L 21



Temptation 78



Tiffany-L 46



Toppers 5-11



Trish-PA/M/L 40



Violet-H/M/L 39



Whirlwind 78



Willow-MP/L 49

H - Hand-knotted
 HH - Human Hair
 L - Lace Front
 M - Monofilament top
 MP - Monofilament part
 P - Petite headsie
 PA - Petite Average
 headsie



Henry Margu