

# Instructions to Video Chat with *Your Loved Ones*

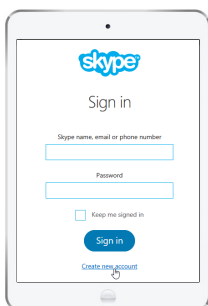


In an effort to make your stay as comfortable as possible, we know that it's important for you to stay connected with your friends and family, especially when providing medical updates. Thanks to a very generous donation, we are pleased to provide you an iPad during your inpatient stay to be used for video chatting with your loved ones. You are welcome to use this chat function when your physician is in your room as well, so that everyone can stay updated.

We recommend using the Skype app on the iPad. Your loved ones at home can download this app for free on any personal device's app store.

If you or your loved ones don't have a 'Skype ID,' it's very easy to get set up by following the below instructions.

At any point, you are welcome to contact your care team with questions or concerns.



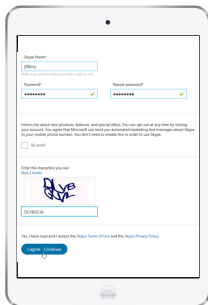
## Getting started with Skype for Web

It only takes a few minutes to set up Skype for the first time. You'll start by creating an account on the website.

If you have an @hotmail.com or @outlook.com email address—or an account that lets you use Microsoft services like OneDrive or Xbox Live—you already have a Skype account. You can simply sign in to Skype with your existing information.

### TO CREATE A SKYPE ACCOUNT:

1. Navigate to <http://web.skype.com> in your web browser, then select **Create new account**.
2. The **signup** form will appear. Follow the directions and enter the required information, like your name, birth date, and gender. You'll also need to choose a **user name**, which other people can use to find you on Skype.
3. Review the Skype terms of service and privacy policy, then select **I agree - Continue**.
4. Your account will be created, and Skype for Web will appear.

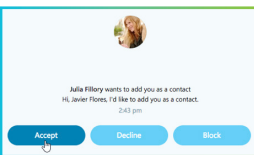
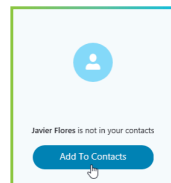
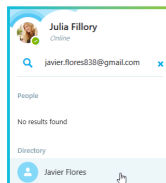
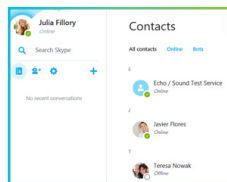


## Getting to know Skype for Web

Now that you've created an account, you'll want to take a few minutes to become familiar Skype for Web. Click the buttons in the interactive below to learn how to navigate the Skype for Web interface.

### TO CREATE A SKYPE ACCOUNT:

1. Search for someone you know using a **name**, **Skype name**, or **email address** with the search bar, then click any name to see more information.
2. When you find the person you're looking for, click **Add to Contacts** to send a **contact request**.



## Accepting contact requests

1. On Skype, you add contacts to your account—and they add you to theirs—via **contact requests**. When you receive a request, you can **accept**, **decline**, or **block** the person.