

HM

Henry Margu

2020



# HM

## Henry Margu



William Margu standing in front of his West Philly millinery shop in 1950. The beginnings of the company he would soon form with his son Henry.

**T**rend-setting styles, cutting-edge colorations, incomparable quality and relentless dedication to our customers have secured Henry Margu's position as a leader of the "alternative" hair industry.

Since Henry Margu first came on the scene in Philadelphia in 1951, family ownership has developed the company into one of the most well respected international brands of wigs and hair fashions. From a humble beginning in the store front millinery shop of the family house, the perseverance and dedication of the Margu family has made us the oldest and most experienced wig manufacturer in the US. Over these many years, innovative ideas have helped us create some of the most intriguing styles and unique colors in the industry as well as crafting our reputation as a trendsetter. The design staff at Henry Margu has not only focused on developing exquisite fashions but also on achieving the highest quality standards for our products. While Henry Margu continues to grow, our core values and strong family culture have not changed.

Our enduring partnerships with thousands of retailers is the result of our excellent customer service and knowledgeable sales staff which has enabled us to serve countless women over the years.

With 69 years of history, many milestones have been recognized at Henry Margu with many more still to come. Most importantly, the driving force of our efforts is for one purpose ... the satisfaction of our customers!



Henry Margu in 1976 as shown in a publication commemorating the 25<sup>th</sup> anniversary of Henry Margu, Inc.

In today's world, when a woman's hair looks good, she feels good. Henry Margu is helping women exude beauty and confidence with a countless variety of fashion forward and elegant styles available in a wide range of our exclusive salon inspired colors.

The superior craftsmanship of Henry Margu wigs utilizes sophisticated techniques including specialized fiber processing and blending methods making our styles more manageable and natural looking. Our design team is constantly working to continually create lighter weight wigs with exceptional comfort for endless hours of wearing pleasure.

The beautiful colorations developed by Henry Margu add a touch of realism to any style. Using the most up-to-date coloring trends, the highlighting is designed to accentuate each individual style creating the most natural appearance for every wig.

Henry Margu is creating freedom of choice by enabling every woman to easily achieve any hairstyle and to change her appearance at a moment's notice to look her absolute best.

Browse the following pages and see for yourself why the difference is beautiful™ with Henry Margu wigs.

**Henry Margu ... The Difference is Beautiful!™**

**Style shown:** Jules in color 8/27/33H



**Front cover:** Ava in color 1BH.





## Lola

Ref#: 2487

Color shown: 8/27/26GR

Colors: 1BH, 4H, 5H, 7H, 8H, 8/27/26GR, 8/27/33H, 10/613GR, 12H, 14H, 16H, 24H18, 26GR, 31H, 88GR, 131GR, 614GR

Weight: 4.15 ounces

Bang: 5" Eartab: 9" Nape: 7"

Top: 5½ - 9" Sides: 9" Back: 7 - 9"

Overall: 12"



## Gabby

Ref#: 2450

Color shown: 88GR

Colors: 1BH, 4H, 5H, 6H, 7H, 8H, 8/14H, 8/27/26GR, 8/27/33H, 10/613GR, 12AH, 12H, 14H, 16H, 24H18, 26GR, 26H, 27AH, 31H, 33H, 88GR, 88H, 130H, 131GR, 614GR, 626H

Weight: 2.30 ounces

Bang: 4½" Eartab: 4½" Nape: 3½"

Top: 4 - 5¾" Sides: 3½ - 4½" Back: 3½ - 4½"







### Danielle

Ref#: 2409

Color shown: 626H

Colors: 1BH, 4H, 5H, 6H, 7H, 8H, 8/14H, 8/27/33H, 12AH, 12H, 14H, 16H, 24H18, 26H, 27AH, 31H, 33H, 88H, 130H, 131H, 614H, 626H

Weight: 3.25 ounces

Bang: 4½" Eartab: 7" Nape: 7"

Top: 3½ - 6¼" Sides: 6¼ - 7¾" Back: 5½ - 7¾"

Overall: 14½"



### Bailey

Ref#: 2439

Color shown: 7H

Colors: 1BH, 4H, 5H, 6H, 7H, 8H, 8/14H, 8/27/26GR, 8/27/33H, 12H, 14H, 16H, 24H18, 26GR, 26H, 27AH, 33H, 37, 38H, 43, 44H, 51H, 56, 60H, 88GR, 88H, 131GR, 614GR, 614H

Weight: 2.25 ounces

Bang: 4¼" Eartab: 3½" Nape: 3"

Top: 3¾" Sides: 3 - 3½" Back: 3 - 3½"





## Mia

Ref#: 2488

Color shown: 12H

Colors: 1BH, 4H, 5H, 6H, 7H, 8H, 8/14H, 8/27/26GR, 12AH, 12H, 14H, 16H, 24H18, 26GR, 27AH, 31H, 33H, 37, 43, 51, 60, 88GR, 130H

Weight: 2.70 ounces

Bang: 5½" Eartab: 5" Nape: 2¾"

Top: 3 - 5½" Sides: 3½ - 5½" Back: 3½ - 5½"

Overall: 9½"



## Felicia

Ref#: 2452

Color shown: 8/14H

Colors: 1BH, 4GR, 4H, 5H, 6H, 7H, 8H, 8/14H, 8/27/33H, 12AH, 12H, 14H, 16H, 24H18, 26GR, 26H, 27AH, 31H, 33H, 88H, 130H, 131GR, 614GR, 614H, 626H

Weight: 4.20 ounces

Bang: 5" Eartab: 9" Nape: 7"

Top: 6 - 9" Sides: 8 - 9" Back: 7 - 9"

Overall: 13"







KAYLA



JESSICA



NIKKI



**Kayla**  
Ref#: 2351  
Color shown: 12H  
Colors: 1BH, 4H, 5H, 6H, 7H, 8H, 8/14H, 8/27/33H, 12AH, 12H, 14H, 16H, 24H18, 26H, 27AH, 31H, 33H, 37, 38, 43, 44, 51, 56, 60, 88H, 130H, 131H, 614H, 626H  
Weight: 2.95 ounces  
Bang: 4" Eartab: 5" Nape: 5"  
Top: 4 - 4½" Sides: 4½ - 5½" Back: 4½ - 5½"



**Jessica**  
Ref#: 2485  
Color shown: 8/14H  
Colors: 4H, 5H, 6H, 7H, 8H, 8/14H, 8/27/33H, 12AH, 12H, 14H, 16H, 24H18, 26H, 27AH, 31H, 37, 38, 43, 44, 51, 56, 60, 88H  
Weight: 1.95 ounces  
Bang: 2¾" Eartab: 2¼" Nape: 1¾"  
Top: 1¾ - 3¼" Sides: 2¼ - 2¾" Back: 1¾ - 2¾"



**Nikki**  
Ref#: 2393  
Color shown: 626H  
Colors: 1BH, 4GR, 4H, 5H, 6H, 7H, 8H, 8/14H, 8/27/26GR, 8/27/33H, 12AH, 12H, 14H, 16H, 24H18, 26GR, 26H, 27AH, 31H, 33H, 37, 38, 43, 44, 51, 56, 60, 88GR, 88H, 130H, 131GR, 614GR, 614H, 626H  
Weight: 2.25 ounces  
Bang: 4½" Eartab: 4½" Nape: 4½"  
Top: 3½ - 5½" Sides: 4 - 5" Back: 4 - 5"  
Overall: 12½"





## Ruby

Ref#: 2467

Color shown: 24H18

Colors: 1BH, 4H, 5H, 6H, 7H, 8H, 8/14H, 8/27/33H, 12AH, 12H, 14H, 16H, 24H18, 26H, 27AH, 31H, 33H, 37, 38H, 43, 44H, 51H, 56, 60H, 88H, 614GR

Weight: 1.90 ounces

Bang: 3" Eartab: 2½" Nape: 2¼"

Top: 2 - 3" Sides: 2¼ - 2½" Back: 2¼ - 2½"

Petite Average headsize



## Holly

Ref#: 2445

Color shown: 14H

Colors: 1BH, 4GR, 4H, 5H, 6H, 7H, 8H, 8/14H, 8/27/26GR, 8/27/33H, 12AH, 12H, 14H, 16H, 24H18, 26GR, 26H, 27AH, 31H, 33H, 37, 38, 43, 51, 56, 60, 88GR, 88H, 131GR, 614GR, 614H, 626H

Weight: 2.75 ounces

Bang: 5½" Eartab: 5" Nape: 2"

Top: 8" Sides: 5½" Back: 5"

Overall: 9½"





## Marnie

Ref#: 2500

Color shown: 14H

Colors: 1BH, 4GR, 4H, 6H, 7H, 8H, 8/14H, 8/27/26GR, 8/27/33H, 12AH, 12H, 14H, 16H, 24H18, 26GR, 26H, 27AH, 33H, 37, 38, 43, 44, 51, 56, 60, 88GR, 88H, 130H, 131GR, 614GR, 614H

Weight: 1.75 ounces

Bang: 4" Eartab: 3½" Nape: 2¾"

Top: 2¾ - 4" Sides: 2½ - 3½" Back: 2½ - 3½"



## Chloe

Ref#: 2434

Color shown: 8H

Colors: 1BH, 4GR, 4H, 5H, 6H, 7H, 8H, 8/14H, 8/27/26GR, 8/27/33H, 12H, 14H, 16H, 24H18, 26GR, 26H, 27AH, 33H, 88GR, 88H, 130H, 131GR, 614GR, 626H

Weight: 2.35 ounces

Bang: 4¾" Eartab: 4" Nape: 5"

Top: 4¾ - 5¼" Sides: 3½ - 5" Back: 3½ - 4"

Overall: 13"







## Savannah

Ref#: 2437

Color shown: 8/27/26GR

Colors: 1BH, 4GR, 4H, 5H, 6H, 7H, 8H, 8/14H, 8/27/26GR, 8/27/33H, 12AH, 12H, 14H, 16H, 24H18, 26GR, 26H, 27AH, 31H, 33H, 88GR, 88H, 13oH, 131GR, 614GR, 614H, 626H

Weight: 4.00 ounces

Bang: 6" Eartab: 11" Nape: 10"

Top: 5 - 10½" Sides: 9 - 11" Back: 9½ - 11"

Overall: 16"



## Paige

Ref#: 2482

Color shown: 6H

Colors: 1BH, 4GR, 4H, 5H, 6H, 7H, 8H, 8/14H, 8/27/26GR, 8/27/33H, 10/613GR, 12AH, 12H, 14H, 16H, 24H18, 26GR, 26H, 27AH, 31H, 33H, 88GR, 88H, 13oH, 131GR, 614GR, 614H, 626H

Weight: 3.30 ounces

Bang: 3½" Eartab: 7½" Nape: 5"

Top: 3½ - 7½" Sides: 6½ - 7½" Back: 5 - 7½"

Overall: 11"







AUDREY



EMILY



ELLA



### Audrey

Ref#: 2430

Color shown: 614H

Colors: 1BH, 4GR, 4H, 5H, 6H, 7H, 8H, 8/14H, 8/27/26GR, 8/27/33H, 12AH, 12H, 14H, 16H, 24H18, 26GR, 26H, 27AH, 31H, 33H, 37, 38H, 43, 44H, 51H, 56, 60H, 88GR, 88H, 130H, 131GR, 614GR, 614H

Weight: 2.25 ounces

Bang: 4½" Eartab: 3" Nape: 2"

Top: 4½ - 6" Sides: 2 - 3" Back: 2 - 5½"



### Emily

Ref#: 2503

Color shown: 37

Colors: 1BH, 4H, 5H, 6H, 7H, 8H, 8/14H, 8/27/33H, 12AH, 12H, 14H, 16H, 24H18, 26H, 27AH, 33H, 37, 38H, 43, 44H, 51H, 56, 60H, 88H

Weight: 1.75 ounces

Bang: 3½" Eartab: 3" Nape: 2"

Top: 2 - 3½" Sides: 2 - 3" Back: 2 - 3"



### Ella

Ref#: 2453

Color shown: 7H

Colors: 1BH, 4H, 5H, 6H, 7H, 8H, 8/14H, 8/27/33H, 12H, 14H, 16H, 24H18, 26GR, 26H, 27AH, 31H, 88H, 626H

Weight: 2.90 ounces

Bang: 4" Eartab: 5½" Nape: 3"

Top: 4 - 7" Sides: 5½" Back: 4 - 5½"

Overall: 9½"





## Jayde

Ref#: 2455

Color shown: 614GR

Colors: 1BH, 4H, 5H, 6H, 7H, 8H, 8/14H, 8/27/33H, 12H, 14H, 16H, 24H18, 26GR, 26H, 31H, 88H, 614GR, 614H, 626H

Weight: 3.40 ounces

Bang: 4½" Eartab: 6½" Nape: 3"

Top: 9½" Sides: 6 - 8" Back: 2¾ - 8"

Overall: 10½"



## Annette

Ref#: 2369

Color shown: 7H

Colors: 1BH, 4GR, 4H, 5H, 6H, 7H, 8H, 8/14H, 8/27/26GR, 8/27/33H, 10/613GR, 12AH, 12H, 14H, 16H, 24H18, 26GR, 26H, 27AH, 31H, 33H, 37, 38H, 43, 44H, 51H, 56, 60H, 88GR, 88H, 130H, 131GR, 614GR, 614H

Weight: 1.95 ounces

Bang: 3½" Eartab: 2½" Nape: 2"

Top: 2½ - 5" Sides: 2½ - 3" Back: 2 - 3½"







## Elena

Ref#: 2501

Color shown: 8/27/33H

Colors: 1BH, 4H, 5H, 6H, 7H, 8H, 8/14H, 8/27/33H, 12H, 14H, 16H, 24H18, 26H, 27AH, 33H, 37, 38H, 43, 44H, 51H, 56, 60H, 88H, 614H

Weight: 2.00 ounces

Bang: 4" Eartab: 3½" Nape: 2½"

Top: 2¾ - 4" Sides: 2½ - 4" Back: 2½ - 4"



## Amber

Ref#: 2461

Color shown: 7H

Colors: 1BH, 4H, 5H, 6H, 7H, 8H, 8/14H, 8/27/33H, 12AH, 12H, 14H, 16H, 24H18, 26H, 27AH, 31H, 37, 38, 43, 44, 51, 56, 60, 88H, 131GR, 614H

Weight: 2.00 ounces

Bang: 2½" Eartab: 3" Nape: 2"

Top: 2 - 4" Sides: 2 - 3" Back: 2 - 3"







## Brenda

Ref#: 2426

Color shown: 24H18

Colors: 1BH, 4H, 5H, 6H, 7H, 8H, 8/14H, 8/27/26GR, 8/27/33H, 12AH, 12H, 14H, 24H18, 26GR, 26H, 27AH, 33H, 37, 51H, 56, 60H, 88GR, 88H, 614GR

Weight: 2.00 ounces

Bang: 4½" Eartab: 5" Nape: 3½"

Top: 4 - 6" Sides: 3½ - 5" Back: 3½ - 5"

Overall: 11½"

Petite headsize



## Bethany

Ref#: 2444

Color shown: 26GR

Colors: 1BH, 4GR, 4H, 5H, 6H, 7H, 8H, 8/14H, 8/27/26GR, 8/27/33H, 12AH, 12H, 14H, 16H, 24H18, 26GR, 26H, 27AH, 31H, 33H, 88GR, 88H, 130H, 131GR, 614GR, 614H, 626H

Weight: 4.05 ounces

Bang: 5" Eartab: 11" Nape: 11½"

Top: 11" Sides: 11" Back: 11"

Overall: 18"







LUCY



AMELIA



PIPER



**Lucy**  
Ref#: 2505  
Color shown: 12H  
Colors: 1BH, 4H, 5H, 6H, 7H, 8H, 8/14H, 8/27/33H, 12H, 14H, 16H, 24H18, 26H, 27AH, 37, 38, 43, 44, 51, 56, 60, 88H  
Weight: 2.00 ounces  
Bang: 3¼" Eartab: 2½" Nape: 1¾"  
Top: 2¾ - 3¼" Sides: 2¼ - 2¾" Back: 2¼ - 2¾"



**Amelia**  
Ref#: 2507  
Color shown: 26H  
Colors: 1BH, 4H, 5H, 6H, 7H, 8H, 8/14H, 12H, 14H, 16H, 24H18, 26H, 33H, 37, 38, 43, 44, 51, 56, 60, 88H  
Weight: 1.80 ounces  
Bang: 3¾" Eartab: 3¼" Nape: 2¾"  
Top: 3¾" Sides: 3¼ - 3¾" Back: 3¼ - 3¾"



**Piper**  
Ref#: 2502  
Color shown: 14H  
Colors: 1BH, 4H, 5H, 6H, 7H, 8H, 8/14H, 8/27/33H, 12H, 14H, 16H, 24H18, 26H, 33H, 37, 38, 43, 44, 51, 56, 60, 88H, 131H  
Weight: 1.55 ounces  
Bang: 2¼" Eartab: 2¼" Nape: 1¾"  
Top: 2¼" Sides: 1¾ - 2½" Back: 1¾ - 2¼"  
Petite headsize





## Lindsay

Ref#: 2491

Color shown: 10/613GR

Colors: 1BH, 4GR, 4H, 5H, 6H, 7H, 8H, 8/14H, 8/27/26GR, 8/27/33H, 10/613GR, 12AH, 12H, 14H, 16H, 24H18, 26GR, 26H, 27AH, 31H, 33H, 37, 43, 51H, 56, 60H, 88GR, 88H, 130H, 614GR

Weight: 2.35 ounces

Bang: 4" Eartab: 4" Nape: 4"

Top: 3½ - 6" Sides: 3½ - 4½" Back: 3½ - 4½"

Monofilament part with lace front



## Presley

Ref#: 2478

Color shown: 26H

Colors: 1BH, 4GR, 4H, 5H, 6H, 7H, 8H, 8/14H, 8/27/26GR, 8/27/33H, 12AH, 12H, 14H, 16H, 24H18, 26GR, 26H, 27AH, 31H, 88GR, 88H, 131GR, 614GR, 626H

Weight: 4.80 ounces

Bang: 10¼" Eartab: 10¼" Nape: 11¼"

Top: 9 - 13" Sides: 9 - 12" Back: 9 - 12"

Overall: 18½"

Monofilament part with lace front







## Tiffany

Ref#: 2473

Color shown: 626H

Colors: 1BH, 4GR, 4H, 5H, 6H, 7H, 8H, 8/14H, 8/27/26GR, 8/27/33H, 10/613GR, 12AH, 12H, 14H, 16H, 24H18, 26GR, 26H, 27AH, 31H, 33H, 88GR, 88H, 131GR, 614GR, 614H, 626H

Weight: 3.75 ounces

Bang: 7" Eartab: 9" Nape: 6½"

Top: 4 - 10½" Sides: 7½ - 9" Back: 6½ - 9"

Overall: 13"

Lace front



## Logan

Ref#: 2489

Color shown: 6H

Colors: 1BH, 4H, 5H, 6H, 7H, 8H, 8/14H, 8/27/26GR, 8/27/33H, 12AH, 12H, 14H, 16H, 24H18, 26GR, 26H, 27AH, 31H, 33H, 37, 43, 51, 56, 60, 88GR, 88H, 130H, 131GR, 614GR

Weight: 2.85 ounces

Bang: 6" Eartab: 4½" Nape: 3½"

Top: 3 - 6" Sides: 3½ - 4½" Back: 3½ - 4½"

Overall: 10"

Petite Average headsize

Monofilament crown







## Harper

Ref#: 2472

Color shown: 14H

Colors: 1BH, 4GR, 4H, 5H, 6H, 7H, 8H, 8/14H, 8/27/26GR, 8/27/33H, 10/613GR, 12AH, 12H, 14H, 16H, 24H18, 26GR, 26H, 27AH, 31H, 33H, 88GR, 88H, 130H, 131GR, 614GR, 614H, 626H

Weight: 4.70 ounces

Bang: 6½" Eartab: 13½" Nape: 12"

Top: 8½ - 12" Sides: 5 - 13½" Back: 5 - 13½"

Overall: 18"

Lace front



## Dylan

Ref#: 2475

Color shown: 24H18

Colors: 1BH, 4GR, 4H, 5H, 6H, 7H, 8H, 8/14H, 8/27/26GR, 8/27/33H, 10/613GR, 12AH, 12H, 14H, 16H, 24H18, 26GR, 26H, 27AH, 31H, 33H, 37, 38H, 43, 51H, 56, 60H, 88GR, 88H, 131GR, 614GR, 614H

Weight: 2.15 ounces

Bang: 4 - 6" Eartab: 2¼" Nape: 1¾"

Top: 2¼ - 6" Sides: 1¼ - 3¼" Back: 1½ - 3¼"

Lace front







CELINE



FAITH



BROOKLYN



### Celine

Ref#: 2457

Color shown: 131H

Colors: 1BH, 4H, 5H, 6H, 7H, 8H, 8/14H, 8/27/33H, 12H, 14H, 16H, 24H18, 26H, 31H, 130H, 131H, 614H, 626H

Weight: 5.40 ounces

Bang: 3" Eartab: 15" Nape: 13"

Top: 12 - 17" Sides: 15 - 17" Back: 13 - 17"

Overall: 19"

Monofilament crown area



### Faith

Ref#: 2441

Color shown: 8/27/33H

Colors: 1BH, 4GR, 4H, 5H, 6H, 7H, 8H, 8/14H, 8/27/26GR, 8/27/33H, 10/613GR, 12AH, 12H, 14H, 16H, 24H18, 26GR, 26H, 27AH, 31H, 33H, 37, 38, 43, 44, 51, 56, 60, 88GR, 88H, 130H, 131GR, 614GR, 614H

Weight: 1.65 ounces

Bang: 3" Eartab: 2½" Nape: 2¼"

Top: 1¾ - 3½" Sides: 2½" Back: 1¾ - 3½"

Petite headsize

Monofilament crown area



### Brooklyn

Ref#: 2480

Color shown: 31H

Colors: 1BH, 4GR, 4H, 5H, 6H, 7H, 8H, 8/14H, 8/27/26GR, 8/27/33H, 12AH, 12H, 14H, 16H, 24H18, 26GR, 26H, 27AH, 31H, 33H, 88GR, 88H, 130H, 131GR, 614GR

Weight: 3.25 ounces

Bang: 8" Eartab: 8" Nape: 4½"

Top: 12" Sides: 10" Back: 9½"

Overall: 12"

Petite Average headsize

Monofilament part with lace front





## Bonnie

Ref#: 2458

Color shown: 6H

Colors: 1BH, 4H, 5H, 6H, 7H, 8H, 8/14H, 8/27/33H, 12AH, 12H, 14H, 16H, 24H18, 26H, 27AH, 31H, 33H, 37, 38, 43, 44, 51, 56, 60, 88H, 614H

Weight: 1.65 ounces

Bang: 3½" Eartab: 2½" Nape: 2"

Top: 2 - 3½" Sides: 2 - 2½" Back: 2 - 2½"

Petite Average headsize

Lace front



## Jules

Ref#: 2481

Color shown: 26H

Colors: 1BH, 4GR, 4H, 5H, 6H, 7H, 8H, 8/14H, 8/27/26GR, 8/27/33H, 10/613GR, 12AH, 12H, 14H, 16H, 24H18, 26GR, 26H, 27AH, 31H, 33H, 88GR, 88H, 130H, 131GR, 614GR, 614H, 626H

Weight: 2.75 ounces

Bang: 7" Eartab: 5½" Nape: 4½"

Top: 3¼ - 7½" Sides: 3¼ - 6½" Back: 4½ - 6½"

Overall: 10"

Lace front







## *Naturally Yours®*

Experience the best Henry Margu has to offer! It's a new era for today's sophisticated fashion forward women looking for quality, comfort and style. With advancements in production techniques that have allowed for countless improvements in every detail, Henry Margu has created a unique collection of wigs for every lifestyle.

Introducing **Naturally Yours®** ... innovative and artistically hand crafted styles offering exceptional comfort while looking amazingly realistic. Modern in design, the Naturally Yours collection offers ready-to-wear styles with a monofilament top that have the versatility to be customized to fit a woman's personal needs. From chic bobs to long, luscious layers, the monofilament top is hand-knotted with individual fibers to simulate realistic hair growth and allowing for multi-directional styling.

For the most discerning consumers that desire only the best, **Naturally Yours Professional** offer a meticulously hand-knotted stretch lace cap with a monofilament top that are uniquely designed to allow for endless hours of wearing pleasure making this collection the most exclusive in the market today.

Browse the following pages to see the variety of luxurious Naturally Yours styles that will help every woman radiate beauty and look and feel her best!

For the most natural appearance and the ultimate in comfort ... it's **Naturally Yours®**.

**Style shown:** Kendall in color 88GR





## Michele

Ref#: 4778

Color shown: 10/613GR

Colors: 1BH, 4GR, 4H, 5H, 6H, 7H, 8H, 8/14H, 8/27/26GR, 8/27/33H, 10/613GR, 12AH, 12H, 14H, 16H, 24H18, 26GR, 26H, 27AH, 31H, 33H, 37, 43, 51H, 56, 60H, 88GR, 88H, 130H, 614GR

Weight: 2.05 ounces

Bang: 4" Eartab: 5½" Nape: 3"

Top: 3 - 5½" Sides: 3 - 4½" Back: 3 - 4½"

Monofilament top with lace front



## Madilyn

Ref#: 4774

Color shown: 7H

Colors: 1BH, 4H, 5H, 6H, 7H, 8H, 8/14H, 8/27/26GR, 8/27/33H, 12H, 14H, 16H, 24H18, 26GR, 26H, 27AH, 31H, 37, 38, 43, 51, 60, 88GR, 131GR, 614GR

Weight: 2.40 ounces

Bang: 7¾" Eartab: 5½" Nape: 2"

Top: 5 - 9" Sides: 3 - 5½" Back: 2 - 5½"

Overall: 9"

Petite Average headsize

Monofilament top with lace front







## Natalie

Ref#: 4775

Color shown: 8/27/26GR

Colors: 1BH, 4GR, 4H, 5H, 6H, 7H, 8H, 8/14H, 8/27/26GR, 8/27/33H, 12AH, 12H, 14H, 16H, 24H18, 26GR, 26H, 27AH, 31H, 33H, 88GR, 88H, 130H, 131GR, 614GR, 614H, 626H

Weight: 4.05 ounces

Bang: 10¼" Eartab: 9¾" Nape: 6"

Top: 10 - 12" Sides: 7½ - 9½" Back: 6 - 7½"

Overall: 14"

Monofilament top with lace front



## Kelly

Ref#: 4745

Color shown: 26H

Colors: 1BH, 4GR, 4H, 5H, 6H, 7H, 8H, 8/14H, 8/27/26GR, 8/27/33H, 10/613GR, 12AH, 12H, 14H, 16H, 24H18, 26GR, 26H, 27AH, 31H, 33H, 37, 38H, 43, 44H, 51H, 56, 60H, 88GR, 88H, 130H, 131GR, 614GR, 614H, 626H

Weight: 2.20 ounces

Bang: 4" Eartab: 6½" Nape: 1½"

Top: 3 - 8" Sides: 4 - 6½" Back: 1½ - 6½"

Overall: 8"

Petite Average headsize

Monofilament top







## Fiona

Ref#: 4749

Color shown: 88GR

Colors: 1BH, 4GR, 4H, 5H, 6H, 7H, 8H, 8/14H, 8/27/26GR, 8/27/33H, 10/613GR, 12AH, 12H, 14H, 16H, 24H18, 26GR, 26H, 27AH, 31H, 33H, 88GR, 88H, 131GR, 614GR, 614H, 626H

Weight: 3.30 ounces

Bang: 7" Eartab: 8½" Nape: 6"

Top: 5 ¼ - 9" Sides: 7½ - 8½" Back: 6 - 8 ½"

Overall: 13"

Monofilament top with lace front



## Taylor

Ref#: 4772

Color shown: 88GR

Colors: 1BH, 4H, 5H, 6H, 7H, 8H, 8/14H, 8/27/26GR, 8/27/33H, 12H, 14H, 16H, 24H18, 26GR, 26H, 27AH, 31H, 88GR, 131GR, 614GR, 626H

Weight: 3.95 ounces

Bang: 6" Eartab: 10" Nape: 10"

Top: 4½ - 10" Sides: 6 - 8¾" Back: 8¾ - 10¾"

Overall: 15½"

Monofilament top







RACHEL



GRACE



HAYDEN



Rachel

Ref#: 4769  
Color shown: 26GR  
Colors: 1BH, 4H, 5H, 6H, 7H, 8H, 8/14H, 8/27/26GR, 8/27/33H, 12H, 14H, 16H, 24H18, 26GR, 26H, 31H, 33H, 37, 38, 43, 51, 56, 60, 88GR, 88H, 131GR, 614GR, 614H  
Weight: 2.35 ounces  
Bang: 6¼" Eartab: 4" Nape: 2¼"  
Top: 2¾ - 6½" Sides: 3 - 5" Back: 2½ - 5"  
Monofilament top with lace front



Grace

Ref#: 4753  
Color shown: 43  
Colors: 1BH, 4H, 5H, 6H, 7H, 8H, 8/14H, 8/27/33H, 12AH, 12H, 14H, 16H, 24H18, 26H, 27AH, 31H, 33H, 37, 38H, 43, 44H, 51H, 56, 60H, 88H  
Weight: 1.75 ounces  
Bang: 2 - 3" Eartab: 2½" Nape: 2¼"  
Top: 2 - 3" Sides: 2¼ - 2½" Back: 2¼ - 2½"  
Petite Average headsize  
Monofilament top with lace front



Hayden

Ref#: 4763  
Color shown: 8/14H  
Colors: 1BH, 4GR, 4H, 5H, 6H, 7H, 8H, 8/14H, 8/27/26GR, 8/27/33H, 10/613GR, 12H, 14H, 16H, 24H18, 26GR, 26H, 27AH, 31H, 33H, 88GR, 88H, 130H, 131GR, 614GR, 626H  
Weight: 3.50 ounces  
Bang: 7" Eartab: 9" Nape: 4"  
Top: 5 - 10" Sides: 6 - 9" Back: 4 - 9"  
Overall: 11½"  
Monofilament top with lace front





## Summer

Ref#: 4777

Color shown: 31H

Colors: 1BH, 4GR, 4H, 5H, 6H, 7H, 8H, 8/14H, 8/27/26GR, 8/27/33H, 12AH, 12H, 14H, 16H, 24H18, 26GR, 26H, 27AH, 31H, 33H, 88GR, 130H, 131GR, 614GR, 626H

Weight: 5.50 ounces

Bang: 12" Eartab: 11" Nape: 10"

Top: 12 - 14" Sides: 11½ - 13" Back: 10 - 12"

Overall: 18"

Monofilament top with lace front



## Farrah

Ref#: 4756

Color shown: 31H

Colors: 1BH, 4GR, 4H, 5H, 6H, 7H, 8H, 8/14H, 8/27/26GR, 8/27/33H, 10/613GR, 12AH, 12H, 14H, 16H, 24H18, 26GR, 26H, 27AH, 31H, 33H, 37, 38, 43, 44, 51, 56, 60, 88GR, 88H, 131GR, 614GR, 626H

Weight: 2.35 ounces

Bang: 5½" Eartab: 6½" Nape: 2½"

Top: 3½ - 6 ½" Sides: 4½ - 6½" Back: 2½ - 6½"

Overall: 9"

Monofilament top with lace front







## Kendall

Ref#: 4758

Color shown: 14H

Colors: 1BH, 4GR, 4H, 5H, 6H, 7H, 8H, 8/14H, 8/27/26GR, 8/27/33H, 10/613GR, 12AH, 12H, 14H, 16H, 24H18, 26GR, 26H, 27AH, 31H, 33H, 88GR, 88H, 130H, 131GR, 614GR, 614H, 626H

Weight: 3.55 ounces

Bang: 7" Eartab: 10" Nape: 8"

Top: 7 - 11" Sides: 8 - 10" Back: 8 - 10"

Overall: 14½"

Monofilament top with lace front



## Becky

Ref#: 4739

Color shown: 88H

Colors: 1BH, 4H, 5H, 6H, 7H, 8H, 8/14H, 8/27/33H, 12AH, 12H, 14H, 16H, 24H18, 26H, 27AH, 31H, 33H, 37, 38H, 43, 44H, 51H, 56, 60H, 88H, 614H

Weight: 1.80 ounces

Bang: 4" Eartab: 2¾" Nape: 1¾"

Top: 2 - 3½" Sides: 1¼ - 2¾" Back: 1¼ - 3¼"

Monofilament top







CHARLOTTE



STELLA



ZOEY



### Charlotte

Ref#: 4750

Color shown: 4H

Colors: 1BH, 4H, 5H, 6H, 7H, 8H, 8/14H, 8/27/33H, 12AH, 12H, 14H, 16H, 24H18, 26H, 27AH, 33H, 37, 38, 43, 44, 51, 56, 60, 88H

Weight: 1.95 ounces

Bang: 3½" Eartab: 3" Nape: 3"

Top: 2½ - 4" Sides: 2¼ - 3" Back: 2¼ - 3"

Monofilament top with lace front



### Stella

Ref#: 4800

Color shown: 12H

Colors: 1BH, 4H, 5H, 6H, 7H, 8H, 8/14H, 8/27/26GR, 8/27/33H, 12AH, 12H, 14H, 16H, 24H18, 26GR, 26H, 27AH, 33H, 37, 38, 43, 44, 51, 56, 60, 88GR, 88H, 131GR, 614H

Weight: 2.05 ounces

Bang: 4" Eartab: 3½" Nape: 2¾"

Top: 4" Sides: 2½ - 3½" Back: 2½ - 3½"

Monofilament top



### Zoey

Ref#: 4767

Color shown: 7H

Colors: 1BH, 4H, 5H, 6H, 7H, 8H, 8/14H, 8/27/26GR, 8/27/33H, 12H, 14H, 16H, 24H18, 26GR, 26H, 31H, 37, 38H, 44H, 51H, 56, 60H, 88GR, 131GR, 614GR, 614H

Weight: 2.25 ounces

Bang: 4¼" Eartab: 4¾" Nape: 3½"

Top: 4 - 6" Sides: 4 - 5" Back: 3½ - 4"

Overall: 10¼"

Monofilament top with lace front





## Athena

Ref#: 4754

Color shown: 24H18

Colors: 1BH, 4GR, 4H, 5H, 6H, 7H, 8H, 8/14H, 8/27/26GR, 8/27/33H, 10/613GR, 12AH, 12H, 14H, 16H, 24H18, 26GR, 26H, 27AH, 31H, 33H, 38, 44, 51, 56, 60, 88GR, 88H, 130H, 131GR, 614GR, 614H, 626H

Weight: 3.75 ounces

Bang: 6" Eartab: 9" Nape: 9"

Top: 6 - 12½" Sides: 7 - 13" Back: 9 - 13"

Overall: 15"

Monofilament top with lace front



## Ava

Ref#: 4742

Color shown: 5H

Colors: 1BH, 4H, 5H, 6H, 7H, 8H, 8/14H, 8/27/33H, 12AH, 12H, 14H, 16H, 24H18, 26H, 27AH, 31H, 33H, 88H, 130H, 131H, 614H, 626H

Weight: 5.65 ounces

Bang: 11½" Eartab: 11½" Nape: 15½"

Top: 11¼ - 11¾" Sides: 11½ - 14½" Back: 12½ - 15½"

Overall: 20"

Monofilament top with full lace front





## Scarlet

Ref#: 4770

Color shown: 14H

Colors: 1BH, 4GR, 4H, 5H, 6H, 7H, 8H, 8/14H, 8/27/26GR, 8/27/33H, 12AH, 12H, 14H, 16H, 24H18, 26GR, 26H, 27AH, 31H, 88GR, 130H, 131GR, 614GR

Weight: 4.30 ounces

Bang: 7" Eartab: 8½" Nape: 8½"

Top: 11" Sides: 11" Back: 11"

Overall: 15"

Monofilament top with lace front



## Peyton

Ref#: 4761

Color shown: 31H

Colors: 1BH, 4GR, 4H, 5H, 6H, 7H, 8H, 8/14H, 8/27/26GR, 8/27/33H, 10/613GR, 12AH, 12H, 14H, 16H, 24H18, 26GR, 26H, 27AH, 31H, 33H, 88GR, 88H, 130H, 131GR, 614GR, 614H, 626H

Weight: 3.00 ounces

Bang: 7" Eartab: 7" Nape: 4"

Top: 5 - 8½" Sides: 4 - 7" Back: 4 - 7"

Overall: 10½"

Monofilament top with lace front







MONICA



SABRINA



GIANNA



### Monica

Ref#: 4751

Color shown: 12H

Colors: 1BH, 4H, 5H, 6H, 7H, 8H, 8/14H, 8/27/33H, 12H, 14H, 16H, 24H18, 26H, 27AH, 31H, 33H, 37, 38, 43, 44, 51, 56, 60, 88H

Weight: 1.80 ounces

Bang: 2¾" Eartab: 2¼" Nape: 1¾"

Top: 2 - 3¼" Sides: 2¼ - 2¾" Back: 1¾ - 2¾"

Petite Average headsize

Monofilament top with lace front



### Sabrina

Ref#: 4731

Color shown: 6H

Colors: 1BH, 4H, 5H, 6H, 7H, 8H, 8/14H, 8/27/33H, 12AH, 12H, 14H, 16H, 24H18, 26H, 27AH, 31H, 33H, 37, 38H, 43, 44H, 51H, 56, 60H, 88H, 130H

Weight: 1.80 ounces

Bang: 3½" Eartab: 4" Nape: 2½"

Top: 2¾ - 4¾" Sides: 2½ - 4" Back: 2½ - 4"

Petite headsize

Monofilament top



### Gianna

Ref#: 4766

Color shown: 14H

Colors: 1BH, 4GR, 4H, 5H, 6H, 7H, 8H, 8/14H, 8/27/26GR, 8/27/33H, 12AH, 12H, 14H, 16H, 24H18, 26GR, 26H, 27AH, 31H, 33H, 37, 38, 43, 44, 51, 56, 60, 88GR, 88H, 130H, 131GR, 614GR, 614H

Weight: 2.40 ounces

Bang: 4" Eartab: 4¼" Nape: 4½"

Top: 3½ - 5½" Sides: 4 - 4½" Back: 4½ - 5"

Overall: 10"

Monofilament top with lace front





### Mystique

Ref#: 4523  
Color shown: 26GR  
Colors: 1BH, 4GR, 4H, 5H, 6H, 7H, 8H, 8/14H, 8/27/33H, 12AH, 12H, 14H, 16H, 24H18, 26GR, 26H, 27AH, 31H, 33H, 88GR, 88H, 131GR, 614GR, 626H  
Weight: 4.10 ounces  
Bang: 6½" Eartab: 9" Nape: 7"  
Top: 10¼" Sides: 9 - 10" Back: 7½ - 10"  
Overall: 14"  
Petite Average headsize  
100% hand-knotted stretch cap with monofilament top  
Medical application on front hairline, eartabs & nape



### Chic

Ref#: 4522  
Color shown: 8/27/33H  
Colors: 1BH, 4GR, 4H, 5H, 6H, 7H, 8H, 8/14H, 8/27/33H, 12AH, 12H, 14H, 16H, 24H18, 26GR, 26H, 27AH, 31H, 33H, 37, 38, 43, 44, 51, 56, 60, 88GR, 88H, 130H, 131GR, 614GR, 614H, 626H  
Weight: 3.30 ounces  
Bang: 8½" Eartab: 6½" Nape: 3"  
Top: 8½" Sides: 6½ - 7½" Back: 3 - 7½"  
Overall: 10"  
100% hand-knotted stretch cap with monofilament top with lace front  
Medical application on front hairline, eartabs & nape







## Violet

Ref#: 4516

Color shown: 8H

Colors: 1BH, 4H, 5H, 6H, 7H, 8H, 8/14H, 8/27/33H, 12AH, 12H, 14H, 16H, 24H18, 26H, 27AH, 31H, 33H, 88H, 614H, 626H

Weight: 6.15 ounces

Bang: 13 - 15" Eartab: 15 - 17" Nape: 15"

Top: 15 - 17" Sides: 15 - 17" Back: 15 - 17"

Overall: 24"

100% hand-knotted stretch cap with monofilament top with lace front  
Medical application on eartabs



## Skylar

Ref#: 4519

Color shown: 8/27/33H

Colors: 1BH, 4H, 5H, 6H, 7H, 8H, 8/14H, 8/27/33H, 12AH, 12H, 14H, 16H, 24H18, 26H, 27AH, 31H, 33H, 37, 38, 43, 44, 51, 56, 60, 88H

Weight: 1.70 ounces

Bang: 2½" Eartab: 2½" Nape: 2"

Top: 2¼ - 3¾" Sides: 2¼ - 3¼" Back: 1¼ - 3¾"

Petite Average headsize

Monofilament top with lace front





NORA



LORI



TRISH



Nora

Ref#: 4515  
Color shown: 8/27/33H  
Colors: 1BH, 4H, 5H, 6H, 7H, 8H, 8/14H, 8/27/33H, 12AH, 12H, 14H, 16H, 24H18, 26H, 27AH, 31H, 33H, 37, 38, 43, 44, 51, 56, 60, 88H, 130H, 614H, 626H  
Weight: 3.15 ounces  
Bang: 10 - 10¼" Eartab: 6½" Nape: 2½"  
Top: 6½ - 9¼" Sides: 6½ - 8¼" Back: 8 - 8¼"  
Overall: 11¾"  
100% hand-knotted stretch cap with monofilament top with lace front  
Medical application on eartabs



Lori

Ref#: 4514  
Color shown: 33H  
Colors: 4H, 5H, 6H, 7H, 8H, 8/14H, 8/27/33H, 12H, 14H, 16H, 24H18, 26H, 27AH, 33H, 37, 38, 43, 44, 51, 56, 60, 88H  
Weight: 1.65 ounces  
Bang: 2½" Eartab: 2½" Nape: 2¼"  
Top: 2½ - 3" Sides: 2¼ - 2¾" Back: 2¼ - 2¾"  
Petite Average headsize  
Monofilament top with lace front



Trish

Ref#: 4513  
Color shown: 5H  
Colors: 1BH, 4H, 5H, 6H, 7H, 8H, 8/14H, 8/27/33H, 12H, 14H, 16H, 24H18, 26H, 27AH, 31H, 37, 38, 43, 44, 51, 56, 60, 88H  
Weight: 1.75 ounces  
Bang: 3" Eartab: 2½" Nape: 2½"  
Top: 2½ - 3" Sides: 2½ - 3" Back: 2½ - 3"  
Petite Average headsize  
Monofilament top with lace front



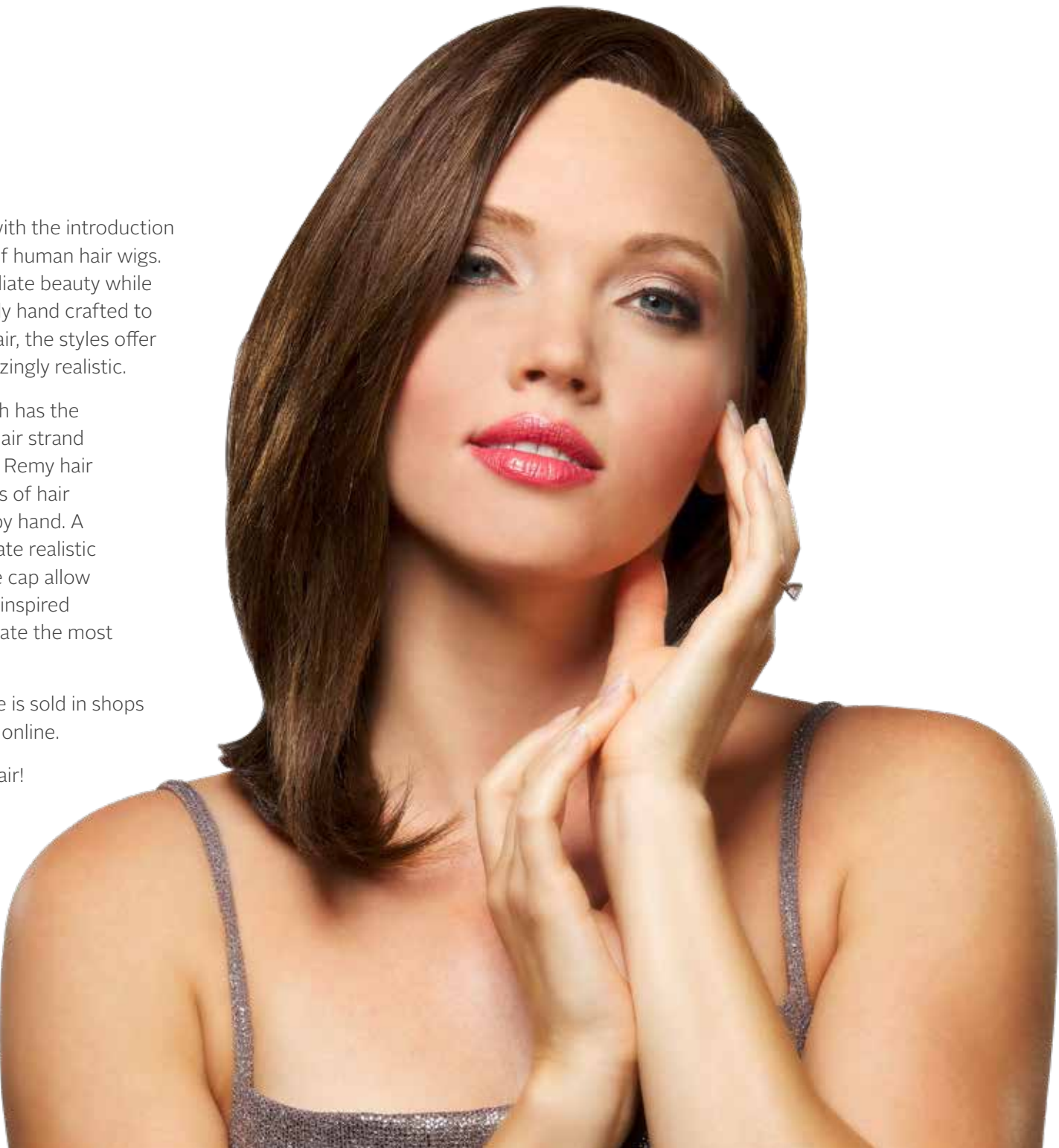
# Premiere

The Henry Margu tradition continues with the introduction of **Premiere**, an innovative collection of human hair wigs. Premiere is designed for women to radiate beauty while looking and feeling their best! Intricately hand crafted to the smallest detail using 100% Remy hair, the styles offer exceptional comfort while looking amazingly realistic.

Premiere utilizes 100% Remy hair which has the cuticle layer preserved to protect the hair strand from environmental damage. Premiere Remy hair is healthy, smooth and soft. The strands of hair are meticulously knotted into the cap by hand. A monofilament top and lace front simulate realistic hair growth. Silicone applications in the cap allow for a secure and comfortable fit. Salon inspired highlighting techniques are used to create the most realistic colors for every Premiere wig.

Created as a professional line, Premiere is sold in shops and boutiques only and is not available online.

**Premiere** is the ultimate in luxurious hair!



Diamond shown in Chocolate



## Diamond

Ref#: 5001  
 Color shown: Espresso  
 Colors: Cappuccino, Chardonnay, Chestnut, Chocolate, Cinnamon, Espresso, Gingerbread, Russet, Sangria, Toffee, Truffle  
 Weight: 5.60 oz.  
 Bang: 9" Eartab: 10" Nape: 9"  
 Top: 11" Sides: 10-12" Back: 9-12"  
 Overall: 16"  
 100% Remy human hair  
 100% hand-knotted stretch cap with monofilament top with lace front  
 Medical application on front hairline, eartabs & nape







Sapphire

Ref#: 5005  
Color shown: Cappuccino  
  
Colors: Cappuccino, Chardonnay, Chestnut, Chocolate, Cinnamon, Espresso, Gingerbread, Russet, Sangria, Toffee, Truffle  
  
Weight: 6.35 oz.  
Bang: 15" Eartab: 14" Nape: 13"  
Top: 16" Sides: 14-16" Back: 13-16"  
Overall: 22"  
  
100% Remy human hair  
100% hand-knotted stretch cap with monofilament top with lace front  
Medical application on front hairline, eartabs & nape



Emerald

Ref#: 5003  
Color shown: Chardonnay  
  
Colors: Cappuccino, Chardonnay, Chestnut, Chocolate, Cinnamon, Espresso, Gingerbread, Russet, Sangria, Toffee, Truffle  
  
Weight: 5.70 oz.  
Bang: 8½" Eartab: 11" Nape: 8½"  
Top: 9½" Sides: 10" Back: 8-10"  
Overall: 13"  
  
100% Remy human hair  
100% hand-knotted stretch cap with monofilament top with lace front  
Medical application on front hairline, eartabs & nape





# Hair Accents®

Designed for comfort, **Hair Accents®** beautifully blended hair is permanently attached to a 100% cotton baseball cap creating a ready-to-wear hair fashion alternative with absolutely no styling needed. All Hair Accents styles are available in 12 naturally highlighted colors in a black or beige colored baseball cap.



**Classic Hat Black**  
Ref#: 8226  
Color shown: 12H  
Length: 8"



**Long Hat Beige**  
Ref#: 8229  
Color shown: 6H  
Length: 14"

🌈 **Classic Hat, Long Hat & Curly Hat are available in colors:** 1BH, 4H, 6H, 8H, 12AH, 12H, 14H, 16H, 24H18, 27AH, 30H, 614H



**Classic Hat Beige**  
Ref#: 8228  
Color shown: 16H  
Length: 9"



**Long Hat Black**  
Ref#: 8227  
Color shown: 30H  
Length: 14"



**Curly Hat Black**  
Ref#: 8249  
Color shown: 27AH  
Length: 9"



**Shorty Hat Beige**  
Ref#: 8230  
Color shown: 27AH  
Length: 5½"

🌈 **Shorty Hat is available in colors:** 1BH, 4H, 6H, 8H, 12AH, 12H, 14H, 16H, 24H18, 27AH, 30H, 38, 44, 51, 60, 614H



Cap size adjustment to easily and comfortably fit all head sizes.



**Shorty Hat Black**  
Ref#: 8225  
Color shown: 14H  
Length: 5½"

## Bands & Bangs



**Classic Band**  
Ref#: 2323  
Color shown: 14H  
Weight: 3.55 ounces  
Overall length: 14"  
2½ inch permanently attached black headband  
Inset shown with 228 Bang attached to headband



### Bang

Ref#: 228  
Overall length: 3½ - 4½"



🌈 **Classic Band & Bang are available in colors:** 1BH, 4H, 6H, 7H, 8H, 8/27/33H, 12AH, 12H, 14H, 16H, 24H18, 26H, 27AH, 33H, 38, 44, 51, 56, 60, 130H, 131H, 614H




# Halos

by Henry Margu

Halo is created with comfort in mind while offering a simple solution to hair loss. Ready-to-wear with no styling needed, Halo is a fast and easy option to a wig when running errands, dropping the kids at school or a trip to the grocery store.

Halo is a realistic wig alternative creating the illusion of a full head of hair. Comfortably fitting the circumference of the head, three silicone patches in the front and ultra-thin adjustments in the back personalize the fit and assist in securing Halo to the head.

 **Halo and Halo Long are available in colors:** 1BH, 4H, 6H, 7H, 8H, 12H, 14H, 24H18, 26H, 27AH, 31H, 33H, 51, 60



## Halo Long

Ref #: 8256  
Color Shown: 26H  
Weight: 2.75 ounces  
Bang: 6¼" Sides: 13"  
Back: 13¼"



Color Shown: 26H



Color Shown: 31H



## Halo

Ref #: 8255  
Color Shown: 12H  
Weight: 1.05 ounces  
Bang: 5¼" Sides: 5¼" Back: 4½"



Color Shown: 24H18



Color Shown: 51



Color Shown: 27AH

Pairing perfectly with a hat, scarf, turban and most baseball caps, Halo is exceptionally lightweight and available in two lengths; a short chin length and a below the shoulder version. Beautifully highlighted colors assure a close to match to any hair color.

When a wig is a hassle, just slip on Halo for a beautiful, believable new look.

**Headwear not included!**



Hairpieces



**Temptation**  
Ref#: 8224  
Color shown: 88H  
Overall length: 24"  
Quick Combs® butterfly comb hairpiece



**Breezy**  
Ref#: 8089  
Color shown: 12AH  
Overall length: 24"  
3/4 cap hairpiece



**Charm**  
Ref#: 8220  
Color shown: 88H  
Overall length: 7"  
Quick Combs® butterfly comb hairpiece



**Whirlwind**  
Ref#: 8223  
Color shown: 8H  
Overall length: 15 - 16"  
Quick Combs® butterfly comb hairpiece



**Sassy**  
Ref#: 8213  
Color shown: 26H  
Overall length: 8½"  
Quick Combs® interlocking comb hairpiece

**Temptation & Whirlwind are available in colors:** 1BH, 4H, 6H, 8H, 12H, 14H, 16H, 24H18, 26H, 33H, 88H, 614H

**Sassy & Charm are available in colors:** 1BH, 4H, 6H, 8H, 12H, 14H, 16H, 24H18, 26H, 33H, 38, 51, 56, 60, 88H, 614H

**Breezy is available in colors:** 1BH, 4H, 6H, 8H, 12AH, 14H, 16H, 24H18, 26H, 33H, 88H, 131H, 614H

Accessories



**Secure Grip**  
The perfect accessory to achieve a secure fit for wigs. Elasticized velour fabric with a Velcro closure comfortably stretches to secure wigs and other headwear from slipping or moving on the head.

Available individually packaged in Beige, Black & Brown.

**Accessory Mannequins**  
Enhancing the presentation of wigs and hairpieces, Shelby (17") and Alexa (25") have a natural skin tone and soft makeup to accentuate any hair color. Produced in a unique flexible PVC material that will resist scratching and chipping, these accessory heads will keep your display looking amazing for many years to come.



Alexa



Shelby



**Wig Care Products**  
Cleanse, Finish, Revitalize & Shape are specifically formulated to enhance and prolong the life of our exceptional wigs and hairpieces.

Henry Margu wig care products are available in cases of 12 eight ounce bottles.



**Comfort Cap**  
Mesh wig liner designed to keep the wearer cool and comfortable while preventing movement and slipping for a more secure fit.

Available in Beige, Black, Cream & Grey and packaged a dozen per color.



**Bamboo Cap**  
Exceptionally absorbent, breathable and ultra-soft, our Bamboo Cap is incredibly cool and comfortable to wear. Hypo-allergenic with natural antibacterial properties makes it resistant to odor and bacteria.

Available individually packaged in Beige, Black & Brown.



**Wig Stands**  
Folding wig stands are ideal for storing and/or drying wigs. Made of sturdy plastic or metal, these convenient stands are easy to assemble and lay flat for traveling ease.



Cap Construction



**Traditional**  
Traditional cap construction features a fine net material in the top area with an open cap in the back. Weftings attached to stretch elastic lace make the open back creating better ventilation to keep the head cooler. A Traditional cap or a wig utilizing components of this type of cap construction is often referred to as a “machine-made” cap.



**Open Cap/Featherlight**  
Open cap is commonly referred to as a “capless” wig due to the lack of net material used in the top as on a Traditional cap and as a result making the wig better ventilated throughout. The entire cap is produced with weftings attached to thin stretch elastic lace. Our exclusive ultra thin weftings used in the Featherlight cap create super lightweight wigs that are exceptionally cool and comfortable to wear.



**Lace Front**  
A lace front wig has a hairline made of a fine lace mesh in which each hair is individually hand knotted. The lace varies in width from ¼ to 1½ inches. The lace typically extends across the entire front hairline but on occasion may extend from ear to ear. The benefit of a lace front wig is an amazingly realistic hairline that appears as if the hair is growing directly out of the scalp and allows the fiber in front to be styled off the face in any direction. The neutral color of the lace mesh takes on the skin tone of the wearer making the hairline more natural looking and virtually invisible. A Lace Front can be utilized on wigs of any type cap construction.



**Hand Knotted**  
A Hand-Knotted wig is also referred to as a Hand-Tied wig. Hand-Tied wigs are made with a soft stretch lace base and 100% of the fiber is individually hand knotted onto the lace base. This type of cap is lightweight and exceptionally comfortable as the lace feels soft against the head. Hand-Tied wigs are produced with a Mono Top making them extremely natural looking as well and making this type of wig the most luxurious available.



**Monofilament Top**  
Monofilament (Mono) is an extremely sheer mesh used to make a transparent base that creates a realistic looking scalp area and is then hand-knotted with individual fibers to simulate the appearance of natural hair growth. The fiber in a Monofilament Top (Mono Top) allows for multidirectional styling and parting the hair on the left, right or center creating amazing styling versatility and resulting in an extremely natural looking appearance. A Mono Top feels smoother against the scalp than a Traditional or Open Cap and more comfortable as a result. Often a Mono Top will have a polyurethane strip in the front of the mono area to help create a more secure fit.



**Monofilament Top with Lace Front**  
Mono Top with Lace Front wigs are produced the same as a Mono Top wig but utilizing a Lace Front as well to create the most natural front hairline in conjunction with the realistic characteristics of a Mono Top. This allows for amazing off the face styling versatility as well as the flexibility to part hair on the left or right or in the center to achieve multiple styling variations. These wigs offer the most natural and realistic appearance due to the combination of the Mono and Lace Front.



**Monofilament Part**  
A Monofilament Part (Mono Part) cap contains a wide Mono Part area on a machine-made cap and allows the wearer to style a conventional part or a more fashionable zigzag part for the most realistic appearance.



**Monofilament Crown**  
A Monofilament Crown (Mono Crown) cap contains a Mono area in the top area of a machine-made cap. This allows for the fiber in this area to have a more natural and realistic appearance and is often used on shorter wig styles in the crown or in the center area of a style that is flatter and with less volume in the top.

Color Swatches



1BH 4H 5H 626H 31H 6H 7H 8H 8/14H 8/27/33H 12AH 12H



24H18 14H 16H 26H 614H 88H 27AH 130H 30H 33H 131H 37



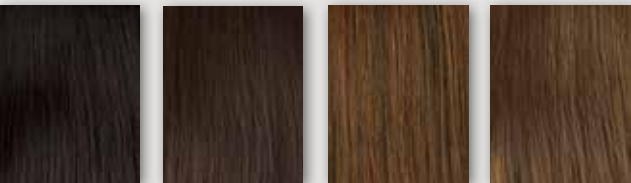
38H 43 44H 51H 56 60H

Gradient colors

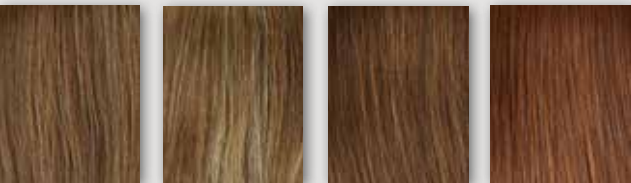


4GR 8/27/26GR 88GR 26GR 10/613GR 614GR 131GR

Premiere colors



Espresso Truffle Chestnut Chocolate



Cappuccino Cinnamon Sangria Russet



Gingerbread Toffee Chardonnay

Premiere color swatches are used as a reference only. An exact match cannot be guaranteed due to the process of hand dying human hair.





Amber 23



Amelia 26



Annette 21



Athena-M/L 54



Audrey 18



Ava-M/L 55



Bailey 7



Becky-M 51



Jules-L 37



Kayla 10



Kelly-PA/M 43



Kendall-M/L 50



Lindsay-MP/L 28



Logan-PA 31



Lola 4



Lori-PA/M/L 64



Bethany 25



Bonnie-PA/L 36



Breezy 74



Brenda-P 24



Brooklyn-PA/MP/L 34



Celine 34



Charlotte-M/L 52



Charm 74



Lucy 26



Madilyn-PA/M/L 41



Marnie 14



Mia 8



Michele-M/L 40



Monica-PA/M/L 58



Mystique-PA/H/M 60



Natalie-M/L 42



Chic-H/M/L 61



Chloe 15



Classic Band 71



Danielle 6



Diamond HH/H/M/L 67



Dylan-L 33



Elena 22



Ella 18



Nikki 10



Nora-H/M/L 64



Paige 17



Peyton-M/L 57



Piper-P 26



Presley-MP/L 29



Rachel-M/L 46



Ruby-PA 12



Emerald HH/H/M/L 69



Emily 18



Faith-P 34



Farrah-M/L 49



Felicia 9



Fiona-M/L 44



Gabby 5



Gianna-M/L 58



Sabrina-P/M 58



Sapphire HH/H/M/L 68



Sassy 74



Savannah 16



Scarlet-M/L 56



Skylar-PA/M/L 63



Stella-M 52



Summer-M/L 48



Grace-PA/M/L 46



Hair Accents 70-71



Halos 72-73



Harper-L 32



Hayden-M/L 46



Holly 13



Jayde 20



Jessica 10



Taylor-M 45



Temptation 74



Tiffany-L 30



Trish-PA/M/L 64



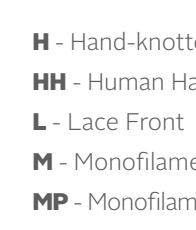
Violet-H/M/L 62



Whirlwind 74



Zoey-M/L 52



Zoey-M/L 52

**H** - Hand-knotted  
**HH** - Human Hair  
**L** - Lace Front  
**M** - Monofilament top  
**MP** - Monofilament part  
**P** - Petite headsizes  
**PA** - Petite Average headsizes





540 Commerce Drive, Yeadon, PA 19050 USA  
610.622.0515 800.345.8284 Fax: 610.259.6541  
[sales@henrymargu.com](mailto:sales@henrymargu.com) [www.henrymargu.com](http://www.henrymargu.com)