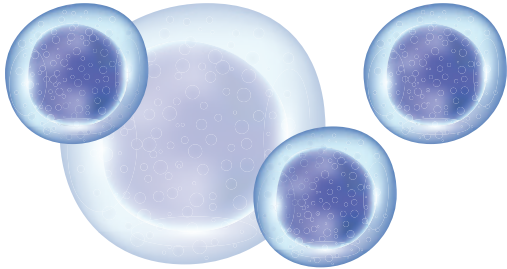




# LYMPHOMA *Info Sheet*



Lymphoma begins in a type of white blood cell called a **lymphocyte**.

**1 in 50**  
average person's  
risk for developing NHL



**60** The number of **lymphoma subtypes**, each with a different behavior, treatment response and prognosis.

## WHAT YOU SHOULD KNOW

**Lymphomas** are a group of blood cancers that develop in the lymphatic system — part of your immune system — that includes the tonsils, spleen, thymus, and the body-wide network of lymph nodes and vessels. Because lymphatic tissue is found in many body areas, lymphoma can start almost anywhere.

Two main lymphoma types are:

- ✓ **Hodgkin lymphoma.** Relatively rare, with an estimated 8,110 new cases of Hodgkin disease diagnosed this year, survival rates are high, especially for early-stage disease.
- ✓ **Non-Hodgkin lymphoma (NHL).** One of the most common cancer types in the United States, with an estimated 74,500 new cases this year, NHL is a leading cause of cancer death.

## ARE YOU AT RISK?

Physicians seldom know why a person develops lymphoma, but research indicates these factors increase risk for **non-Hodgkin lymphoma**:

- ✓ **Weakened immune system**, due to inherited condition or medications.
- ✓ **Certain infections**, such as human immunodeficiency virus (HIV), Epstein-Barr virus (EBV), Helicobacter pylori (H. Pylori), human T-cell leukemia/lymphoma virus type 1 (HTLV-1) and hepatitis C.
- ✓ **Autoimmune disease**, such as rheumatoid arthritis, psoriasis or Sjögren's syndrome.
- ✓ **Age.** Most people with non-Hodgkin lymphoma are older than 60; however Hodgkin disease most commonly occurs in early adulthood, ages 15 to 40.
- ✓ **Male gender.** More men than women develop lymphoma.
- ✓ **Exposure** to certain pesticides.
- ✓ **Previous treatment** for Hodgkin lymphoma.

## SYMPTOMS TO TELL YOUR DOCTOR

- ✓ Swollen, enlarged lymph node(s) in the neck, armpit or groin
- ✓ Fever
- ✓ Drenching night sweats
- ✓ Unexplained weight loss
- ✓ Coughing, difficulty breathing or chest pain
- ✓ Abdominal pain, swelling or fullness
- ✓ Skin rash or itchy skin
- ✓ Feeling weak or very tired



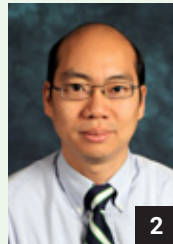
## WHY ROSWELL PARK FOR LYMPHOMA?

- ✓ **Nationally recognized.** We are among a select group of comprehensive cancer centers designated by the National Cancer Institute and the state's only one outside of New York City.
- ✓ **Multidisciplinary care** by a team of lymphoma experts, including hematologists, oncologists, psychologists, dietitians, physical therapists and others who work together to provide comprehensive and integrated care – under one roof.
- ✓ **Access to the latest treatments.** The most promising new drugs, immunotherapies, targeted therapies and cellular therapies, available only through clinical trials, are important options for many patients.
- ✓ **Transplant & Cellular Therapy Center** that's one of the nation's top centers for blood and marrow transplant and other cellular therapies.
- ✓ **Holistic supportive services** to care for you, not just your cancer. Programs include art, music and pet therapy, acupuncture, massage, spiritual care, patient retreats and support groups.

### MEET OUR DOCTORS



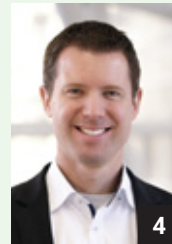
1



2



3



4



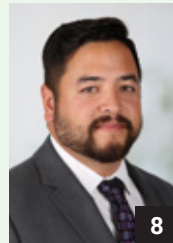
5



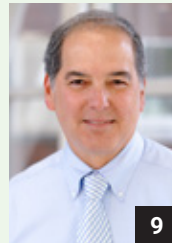
6



7



8



9

### Medical Oncology

1. Suchitra Sundaram, MD
2. George Chen, MD
3. Francisco J. Hernandez-Ilizaliturri, MD
4. Jens Hillengass, MD
5. Kelvin Lee, MD
6. Pallawi Torcka, MD

### Radiation Oncology

7. Anurag Singh, MD
8. Simon Fung-Kee-Fung, MD

### Nuclear Medicine

9. Dominick Lamonica, MD

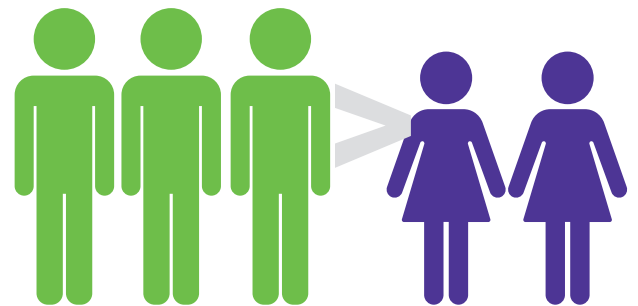
## GET A 2<sup>nd</sup> OPINION

If you have a lymphoma diagnosis, you need a second opinion. We can arrange for our lymphoma experts to review your scans and pathology and schedule a consultation.

**WHY IT MATTERS** – In about

**10%** of cases we review, the diagnosis is changed, impacting your treatment options, decisions and the way forward.

Lymphoma is **more common in men** than women and more common among Caucasians.



Roswell Park is an FDA-authorized treatment center for Yescarta™ and Kymriah™ **two new immunotherapies** for some patients with large B cell lymphoma.