

CENTER FOR INDIGENOUS CANCER RESEARCH



**ROSWELL
PARK**
COMPREHENSIVE CANCER CENTER

**CENTER FOR
INDIGENOUS
CANCER
RESEARCH**

www.RoswellPark.org

Our Mission

The Center for Indigenous Cancer Research aims to honor the values of Indigenous Knowledge, sovereignty, and respect for the environment through community-driven partnerships, collaborative research and education to reduce the impact of cancer on Indigenous communities regionally, nationally and internationally.

About Us

Launched in January 2020, the creation of the CICR honors, builds and supports meaningful relationships between sovereign nations, National Cancer Institute-designated Cancer Centers and the federal government.

What We Do

Work across borders and waters to strengthen partnerships with sovereign nations and urban and rural Indigenous communities to further research in these areas:

- Cancer prevention, behavioral intervention and the environment
- Clinical trials, colorectal cancer screening and the cancer care continuum
- Summer research experience opportunities to engage students in Indigenous cancer research

Building on Our Strengths

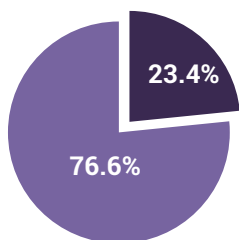
Native Nations face many obstacles accessing healthcare and achieving and maintaining health and wellness. CIRC seeks to address these challenges by:

- Respecting tribal sovereignty
- Promoting resiliency
- Revitalizing Indigenous Knowledge
- Creating infrastructure to enroll more Indigenous students in programs leading to careers in science, technology, engineering, art, or math (STEAM)
- Participating in cultural and community gatherings
- Connecting to intergenerational relationships



Combating Health Disparities

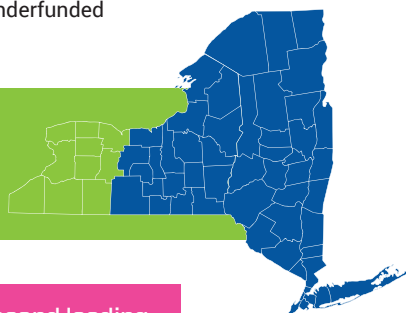
Depending on the region, Native Nations across the United States experience health disparities in several areas including access to care, health insurance, cancer, obesity, diabetes, liver and kidney disease and smoking. For example:



In 2014, 23.4% of American Indians/Alaska Natives (AI/ANs) lacked health insurance coverage and relied solely on the Indian Health Service.

Historically, IHS has been severely underfunded by the federal government.*

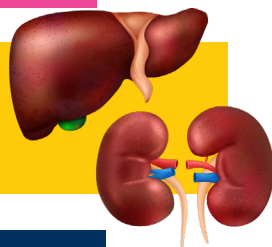
Cancer is among the top leading causes of death for Native Americans in Western New York.



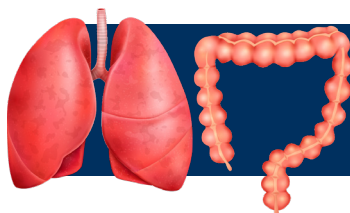
Breast cancer is the second leading cause of cancer death for American Indian women.♦



Chronic liver and kidney disease rates are higher in Haudenosaunee than the white population in the Haudenosaunee Nations.*



Lung cancer and colorectal cancer are the top causes of cancer death for the Haudenosaunee.*



* Census | ♦ American Indian Cancer Foundation | *Roswell Park Center for Indigenous Cancer Research



**CENTER FOR INDIGENOUS
CANCER RESEARCH**

Elm and Carlton Streets | Buffalo, New York 14263
(716) 845-4541 | CICRinfo@RoswellPark.org | RoswellPark.org

National Cancer Institute-Designated Comprehensive Cancer Center
National Comprehensive Cancer Network Member | Blue Distinction® Center for Cellular Immunotherapy - CAR-T
Blue Distinction® Center for Cancer Care | Blue Distinction® Center for Transplants