



NMDP Report Card 2011

Roswell Park Cancer Institute
Blood and Marrow Transplant Program
Philip McCarthy, MD, Director

NMDP Report Card 2011

- There are 153 Allogeneic BMT Centers reporting to the NMDP.
- There are 13/153 (8%) Allogeneic BMT Centers with survival outcomes that are statistically superior to their expected outcomes
- RPCI is one of these 13 Allogeneic BMT centers

NMDP Transplant Center Data

- Analysis based on:
 - Unrelated donor allogeneic patients 1/1/2004-12/31/2008 (5-year rolling average)
 - Related donor allogeneic patients 1/1/2008-12/31/2008 (1-year data for now, will expand to 5-year rolling average)
 - Analysis requires minimum of 100 days follow-up post-BMT on >90% of patients reported to the CIBMTR
- Risk category from 1 (low) to 5 (high) based on: R/D age, KPS, disease/status, HLA match, conditioning regimen, GvHD prophylaxis, donor and cell source, co-morbidities, R/D CMV status, CD34/TNC cell dose, etc.
- Data are analyzed by the CIBMTR Statistical Center and the results are reported annually

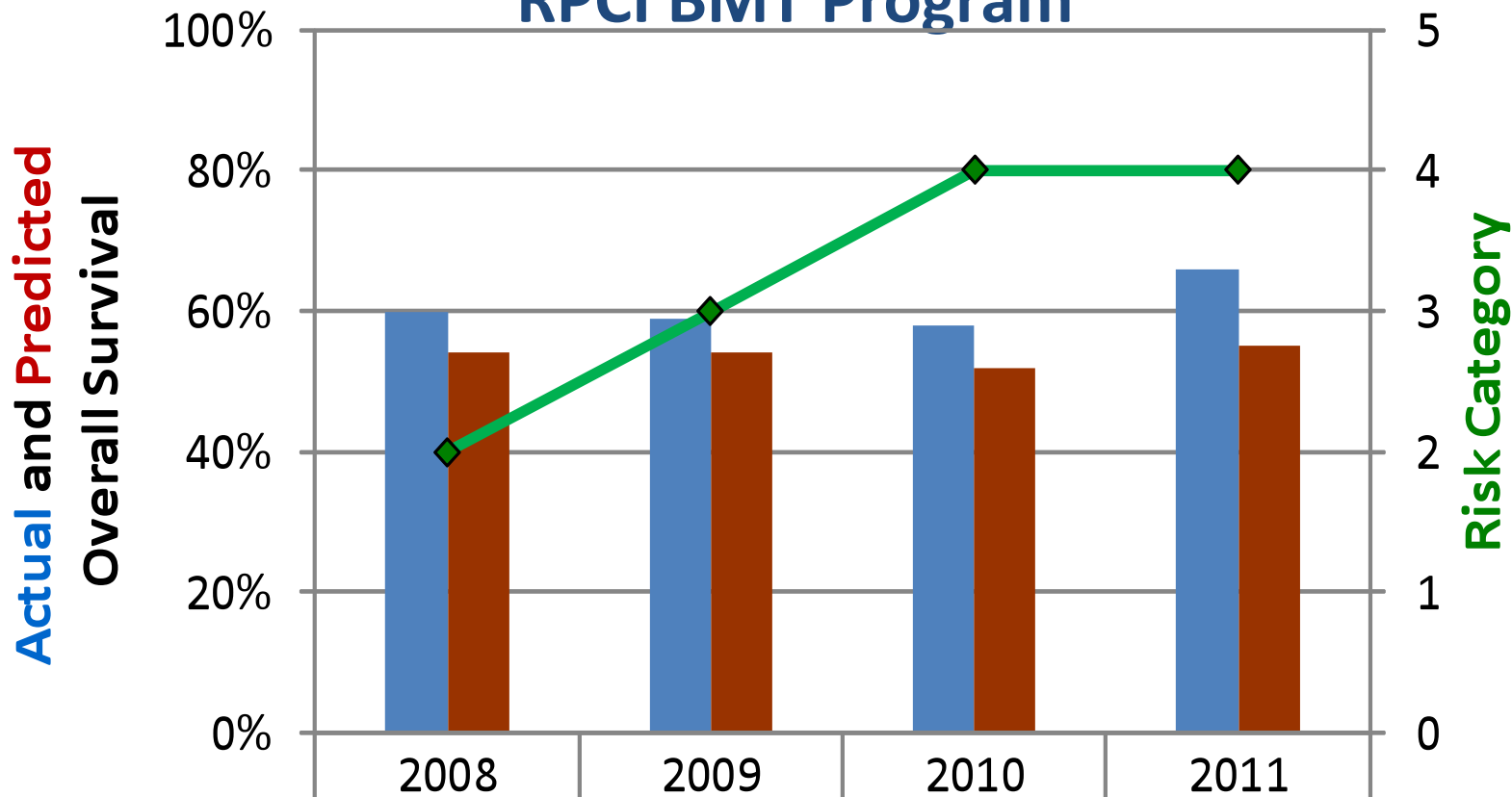
NMDP Center Specific Analysis

- Number of Patients Transplanted
- Actual 1-year overall survival rate
- Predicted 1-year overall survival rate
 - Adjusted by the risk category for the individual transplant center
- 95% confidence interval (CI) for the predicted 1-year overall survival rate (affected by # of patients transplanted by center, the larger the #, the narrower the CI)
- Results – each transplant center statistically has one of the following:
 - Lower survival rate than predicted (actual survival is <95% CI)
 - Similar survival rate to predicted (actual survival within 95% CI)
 - Higher survival rate than predicted (actual survival is >95% CI)

RPCI BMT Program

- N=118 patients
- Actual 1-year survival rate = 66%
- Predicted 1-year survival rate = 55%
- 95% CI predicted 1-yr survival rate = 46%-63%
- Result: RPCI actual 1-year survival is statistically significantly higher than predicted

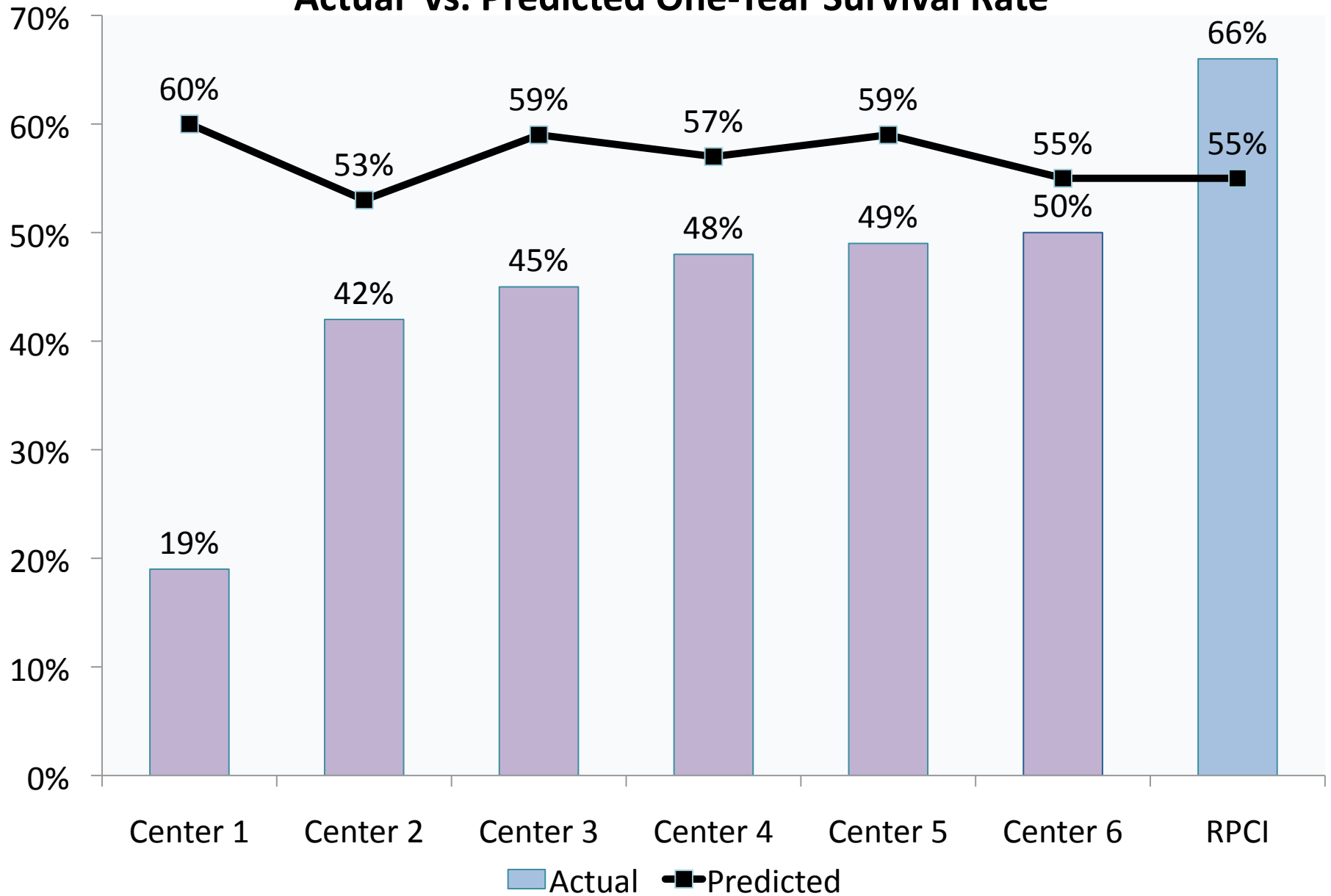
RPCI BMT Program



Actual Survival	60%	59%	58%	66%
Predicted Survival	54%	54%	52%	55%
Risk Category	2	3	4	4

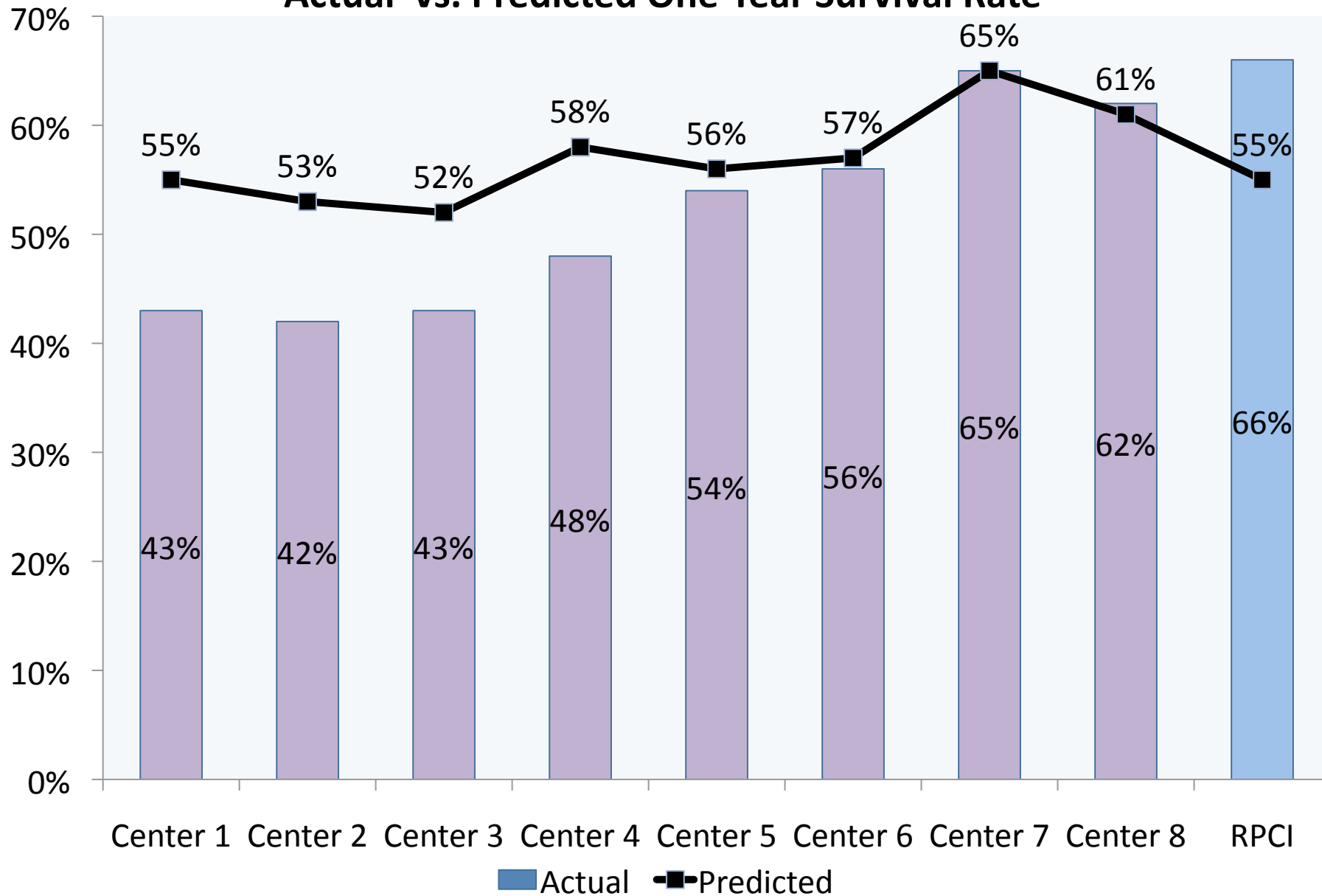
Risk Categories range from 0 (lowest risk) to 5 (highest risk). Data prepared by the National Marrow Donor Program for patients who received a related (2011 report only) or unrelated donor hematopoietic cell transplant. Data from 2011 represent patients transplanted from 2004 to 2008

Regional US Transplant Centers Actual vs. Predicted One-Year Survival Rate



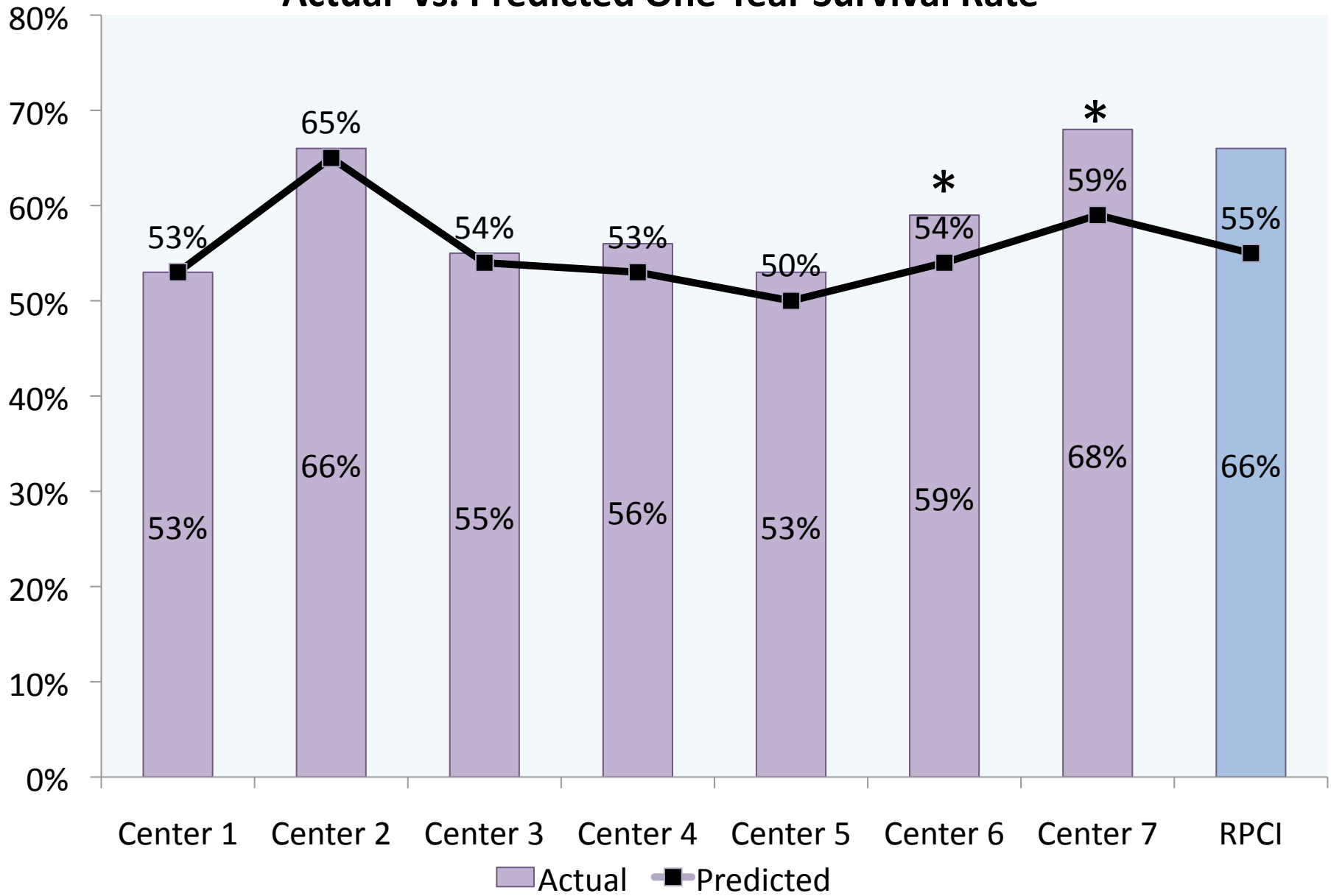
US Transplant Centers

Actual vs. Predicted One-Year Survival Rate



Central US Transplant Centers

Actual vs. Predicted One-Year Survival Rate



Congratulations to the clinical team for outstanding results:

- Floor and Clinic nursing staff
- BMT coordinators
- NP/PAs
- Physicians
- Pharmacists
- PT/OT
- Social Work/Case Management
- Nutrition