

Leukemia Service



We're pioneering
breakthrough therapies
for acute leukemias
and myeloid disorders.

What Sets Us Apart

- **Our expertise** in diagnosis and management of complex patients with acute leukemias, myelodysplastic syndromes (MDS), myeloproliferative neoplasms and other rare hematological and marrow failure disorders.
- **Rapid integrated diagnosis** from a dedicated team of board-certified hematopathologists, cytogeneticists, and flow cytometry and molecular biology experts.
- **Access to cutting-edge treatments**, including CAR T-cell technology, immunotherapy and early phase drugs unavailable elsewhere in the region.
- **Superior survival rates** for AML and CML patients compared with average national outcomes.
- **MDS Center of Excellence** designation recognizing our morphologic expertise in myelodysplastic syndromes, and our programs for cytogenetics, molecular genetics, research and clinical trials.

Our Team Approach



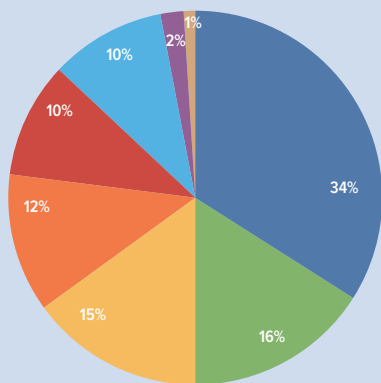
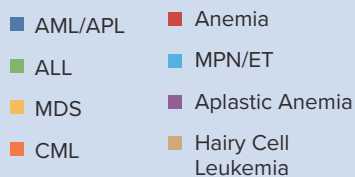
Multidisciplinary care from the start

Patients treated at Roswell Park receive a comprehensive care plan—based on their individual diagnosis, treatment options and supportive care needs—from a team of leukemia care experts. The team includes leukemia oncologists, nurse practitioners, physician assistants, pharmacists, social workers, discharge-planning coordinators, psychologists, research coordinators, dietitians, and physical and occupational therapists.

Pathology—Taking diagnosis to a new level

Leukemia cells are biologically diverse, and with many subtypes and variations, they behave differently in different patients. Our board-certified hematopathologists ensure precise diagnosis and integrate other laboratory testing—clinical, morphologic, immunophenotypic, cytogenetic, and genomic studies of blood, bone marrow, and extramedullary tissue samples—to further guide treatment based on the patient's unique genetic profile.

Roswell Park's Leukemia Service treats all leukemia types, myelodysplastic syndromes, myeloproliferative neoplasms and other bone marrow failure disorders in patients age 18 and older.



Personalized Care for Every Patient

Targeted Therapies and Immunotherapies

These latest cutting-edge drugs block specific molecular, genetic, or biologic aberrations unique to blood cancers to provide a potentially more effective and less toxic treatment approach than chemotherapy. More information on specific agents are available through our **Clinical Research Program**. Current examples of novel therapies available at Roswell Park include:

- CAR T-cells and NK cells for acute leukemia
- Antibody drug conjugates
- Specific FLT3 inhibitors for FLT3-mutated AML
- Anti-telomerase agents for myelofibrosis.

About half of all patients treated by Roswell Park's Clinical Leukemia Service are enrolled on clinical research studies at some time.

State-of-the-Art Care Center

Patients receiving induction treatment are cared for in our specialized unit in Roswell Park's hospital. The private patient rooms and the entire unit are High-Efficiency Particulate-Free Air (HEPA) filtered and a dedicated nursing team attends to leukemia patients' specialized needs.

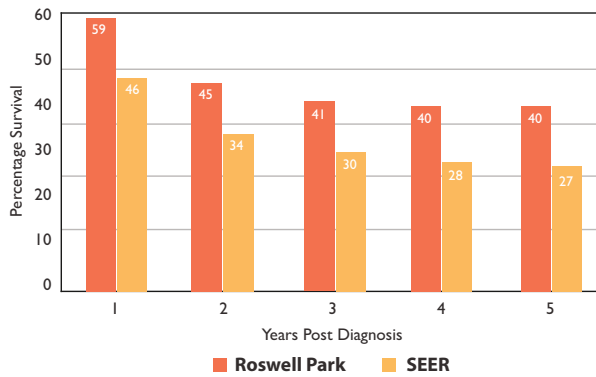
Blood and Marrow Transplant (BMT) Center

The Leukemia team works to identify and evaluate patients who might benefit from a blood or marrow transplant and facilitates access to appropriate and rapid referrals to our BMT Center. Our high-volume center performs about 160 transplants per year and has been recognized by the Center for International Blood and Marrow Transplant Research for achieving better-than-predicted outcomes for patients receiving allogeneic transplants.

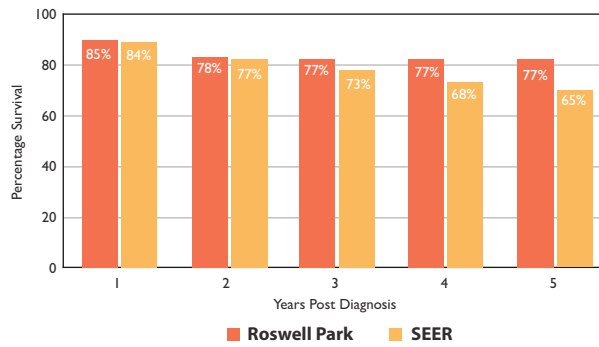
Our Outcomes for AML and CML

The care we provide at Roswell Park follows best practices built on evidence-based medicine. Our superior clinical outcomes reflect our high standards:

ACUTE MYELOID LEUKEMIA
(Five-Year SEER Relative Survival)
Cases diagnosed (2006-2013)



CHRONIC MYELOID LEUKEMIA
(Five-Year SEER Relative Survival)
Cases diagnosed (2006-2013)



Surveillance, Epidemiology, and End Results (SEER) Program (www.seer.cancer.gov) SEER*Stat Database: Incidence - SEER 18 Regs Research Data + Hurricane Katrina Impacted Louisiana Cases Nov 2015 Sub (1973-2013 varying) - Linked To County Attributes - Total U.S., 1969-2014 Counties, National Cancer Institute, DCCPS, Surveillance Research Program, Surveillance Systems Branch, released April 2016, based on the November 2015 submission. Accessed February 8, 2017

Comprehensive Support Services

A leukemia diagnosis can introduce a cascade of challenges, including emotional distress, financial concerns and logistical issues. Our **Social Work** department supports the patient and family from the time of diagnosis, offering:

- Supportive counseling (This is especially important for patients with acute leukemia, who usually must begin treatment immediately, without time to process news of the diagnosis.)
- Programs to help patients and families understand the disease and the course of treatment
- Assistance in navigating the Family Medical Leave Act (FMLA), sick leave and disability
- Help in arranging lodging, transportation and/or language/interpreter needs
- Connections to financial or legal assistance programs or other community resources
- Assistance with advance care planning, palliative care and/or hospice, as needed

Oral Chemotherapy Monitoring Program

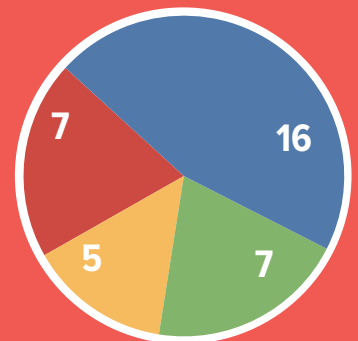
Our leukemia care team includes hematology-oncology clinical pharmacists who meet with patients receiving oral oncolytic therapy to assure their safety, adherence, outcomes and satisfaction with treatment. These pharmacists also facilitate insurance authorizations and co-pay assistance so therapy can be started promptly.

LEUKEMIA CLINICAL TRIAL PORTFOLIO

Current research at Roswell Park includes investigations such as:

- Tyrosine kinase inhibitors for chronic myeloid leukemia
- Novel agents for FLT3-mutated acute myeloid leukemia
- Change in upfront AML therapy (Intensive-> HMA)
- Multi-gene mutational profiling for prognosis and therapy
- Targeting actionable mutations to improve outcomes
- Newer drugs and immunotherapy

36 total (23 Approved/Open)



- Open Studies
- In Approval Process
- Reviewed/Approved
- Pending Submission

[We aim to extend survival and ensure the highest possible quality of life for all our patients.]

Meet the Leukemia Team



Hematologic Oncology

- 1 Eunice Wang, MD, Chief
- 2 Elizabeth Griffiths, MD
- 3 Amanda Przespolewski, DO
- 4 James Thomson, MD
- 5 Swapna Thota, MD

Hematopathology

- 6 Vishala Neppalli, MD
- 7 Bora Baysal, MD, PhD
- 8 Fadi Habib, MD
- 9 Jerry Wong, MD, PhD

Flow Cytometry

- 10 Paul Wallace, MD

Cytogenetics

- 11 AnneMarie Block, PhD
- 12 Sheila Sait, PhD

Medical Psychology

- 13 Megan Pailler, PhD

Clinical Pharmacy

- 14 Jeffrey Baron, PharmD, BCOP
- 15 Mark Walsh, PharmD

Setting the standard of care

Our physicians play key roles in developing the National Comprehensive Cancer Network (NCCN) guidelines for preventing, detecting, and treating specific cancer types. Four members of Roswell Park's Leukemia Team serve on NCCN panels:

- **Eunice Wang, MD** (Acute Myeloid Leukemia & Acute Lymphoblastic Leukemia)
- **Elizabeth Griffiths, MD** (Myelodysplastic Syndrome)
- **James Thomson, MD** (Chronic Myeloid Leukemia)
- **Swapna Thota, MD** (Myeloproliferative Neoplasms)

For more information: www.nccn.org.

Contact Us

To connect with a Roswell Park physician, request information, or refer a patient, call our MD line at **716-845-7763** or email rpmd@roswellpark.org.

COMMUNITY CARE CENTER PHYSICIANS

Breast Care of Western New York

Melissa Hughes, MD
Mariola Poss, MS, FACS

Roswell Park Hematology Oncology Northtowns

Saif Soniwala, MD
Frederick Hong, MD
Adam Kotowski, MD
Michael Krabek, MD, PhD
Bhuvana Ramkumar, MD

Roswell Park Hematology Oncology Southtowns

Isosceles Garbes, MD

Jamestown Medical Oncology & Hematology

Jairus Ibabao, MD

Roswell Park Hematology Oncology of Niagara

Mohamed Ahmed, MD, PhD
Bhuvana Ramkumar, MD

Your patient may prefer to receive cancer care closer to home at one of Roswell Park's community practices at these convenient locations.



Elm & Carlton Streets | Buffalo, New York 14263

www.RoswellPark.org/rpmd

716-845-RPMD (716-845-7763)

A National Cancer Institute-Designated Comprehensive Cancer Center
A National Comprehensive Cancer Network Member | A Blue Distinction Center for Transplants®